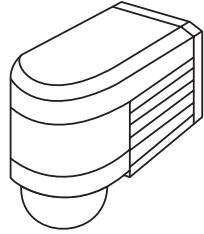


# STEINEL®

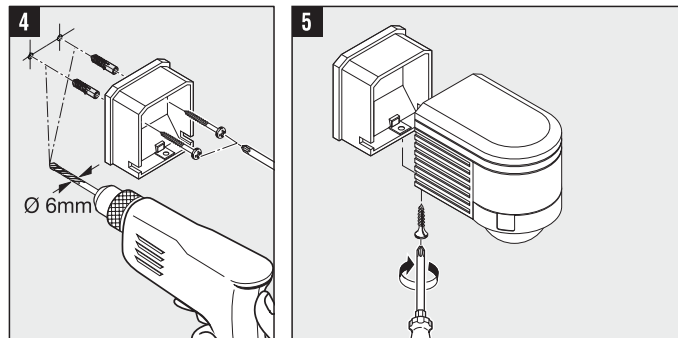
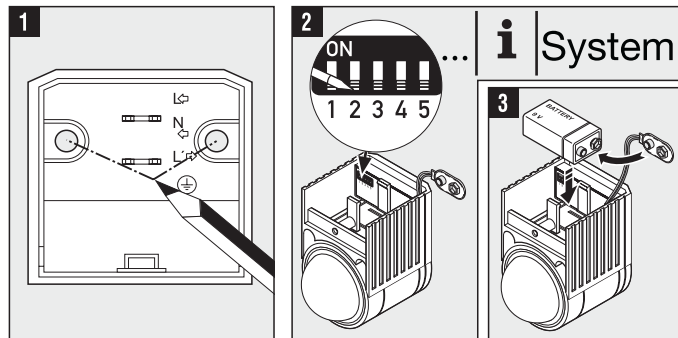
IMPULSER



## IS-FS 300

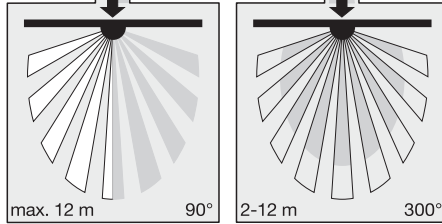
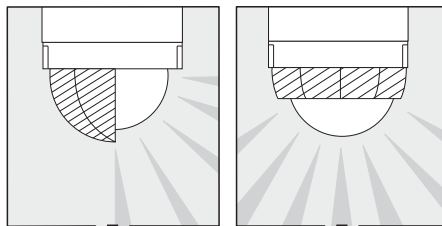
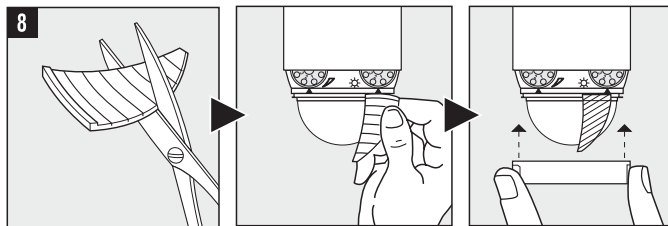
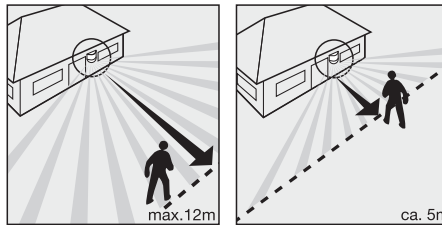
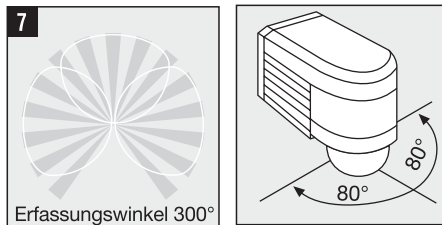
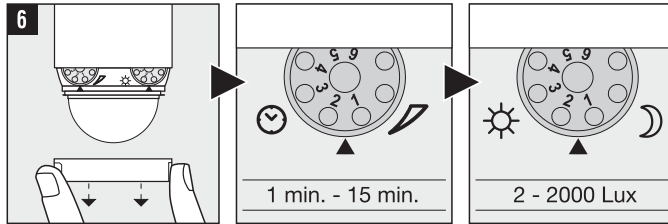
i

	60 x 85 x 95 mm		-20° ... +40°
	9 V Bat.: 6LR6, 6AM6		1 min. - 15 min.
	868,3 MHz		2 - 2000 Lux
	32 addresses		IP 54
	300°	 Ø 6 mm	
	max. 12 m		



9540500

1



2

# STEINEL®

ENGLISH

GB

### System components

The IS-FS 300 wireless transmitter detects any moving sources of heat, such as people, cars etc. and releases pulses to an integrated sensor which then sends out wireless signals. The wireless receivers from the IMPULSER range pick up the transmitter's wireless signals and use them, for example, to switch a light "ON". For further information on setting transmitters and receivers, please refer to the instructions of the IMPULSER system.

### Installation/Setting started

As the sensor is battery-operated. It can be installed at the remotest of sites without mains power supply. The site of installation should be at least 50 cm away from a light source, because heat radiated from it may activate the system. (see Reach adjustment 8)

### Battery

Life at least 12 months, depending on response frequency (frequency with which movements are detected). At a continuous temperature < -20° C, we recommend the use of 9-V lithium batteries

### Functions - Detach decorative ring 8

#### Switch-off delay (time setting)

Device being controlled can be set to stay "ON" from approx. 1 min. to a maximum of 15 min. Control dial set to number 1 = shortest time (approx. 1 min.). Control dial set to 6 = longest time

#### Twilight setting

(Response threshold) Sensor response threshold is infinitely variable from 2-2000 lux. Control dial set to 1 = daylight operation approx. 2000 lux. Control dial set to 6 = twilight operation approx. 2 lux.

#### Detection zone 7

The sensor unit can be turned through ± 80° for aligning (precisely adjusting) the detection zone. The most reliable way of detecting movement is to install the wireless motion detector with the sensor aimed across the direction in which a person would walk and by ensuring that no obstacles (such as trees, walls etc.) obstruct the line of sensor vision.

#### Reach adjustment 8

Shrouds for targeting the sensor to cover a specific detection zone. (Can be divided vertically and horizontally). Vertically = to reduce the angle of detection. Horizontally = to shorten reach. Attaching the shrouds and securing the decorative ring.

#### Troubleshooting (Fault / Cause → Remedy)

**Transmitter not activating receiver / Photoelectric lighting controller set to night-time operation during daytime operation → Re-set / Mains power switch "OFF" on receiver → Switch on / Fuse faulty → New fuse, check connection if necessary / Detection zone not accurately set → Re-adjust / Receiver not correctly programmed → Re-program receiver (same address) / Transmitter too far from receiver → Reduce distance between transmitter and receiver by moving site of installation / Battery flat (wireless transmitter) → Renew battery. **Receiver switching load "ON/OFF" or permanently "ON" when it should not /** Animal movement in the transmitter's detection zone → Shroud to target. **Change or shroud detection zone /** Wind moving trees or bushes in transmitter's detection zone → **Change or shroud detection zone /** Cars on the road being detected → **Change or shroud detection zone /** Sudden temperature change caused by weather (wind, rain, snow) or air expelled from fans, open windows → **Change zone, move site of installation / Transmitter's detection reach changing /** Differing ambient temperature → **Fit shrouds to shorten sensor reach at low temperatures.****

#### Operation/Maintenance

The IS-FS 300 wireless motion detector is suitable for switching light or other loads "ON" and "OFF". The unit is not suitable for burglar alarm systems as it does not provide the level of sabotage protection that is prescribed for this purpose. The detector lens may be cleaned with a damp cloth if it gets dirty (do not use cleaning agents).

#### Declaration of Conformity

This product complies with EMC Directive 04/108/EC and RTTE Directive 99/05/EC.

#### Functional Warranty

This Steinel product has been manufactured with utmost care, tested for proper operation and safety and then subjected to random sample inspection. STEINEL guarantees that it is in perfect condition and proper working order. The warranty period is 36 months, starting on the date of sale to the consumer. We will remedy defects caused by material flaws or manufacturing faults. The warranty will be met by repair or replacement at our own discretion. The warranty does not cover damage to wear parts, nor does it cover damage or defects caused by improper treatment, maintenance or the use of non-genuine parts. Further consequential damage to other objects is excluded. Claims under warranty shall only be accepted if the product is sent fully assembled and well packed complete with a brief description of the fault, a receipt or invoice (date of purchase and dealer's stamp) to the appropriate service centre.

#### Service

Our Customer Service Department will repair faults not covered by warranty or after the warranty period. Please send the product well packed to your nearest Service Centre.

4

# STEINEL®