



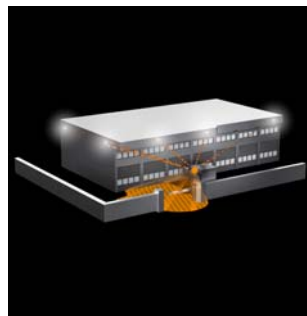
Projecteurs à détecteur_inaktiv

Wireless sensor technology, IMPULSER Receiver LED floodlight XLED-FE 10

Overview Sensor-Switched Floodlights

Information copy

Evolution 3. LED floodlight XLED 10 for outdoors, receives wireless signals from as many as 8 STEINEL Professional transmitters, 30 W LED/2000 lm for perfect illumination on a minimal amount of energy, STEINEL Active-Thermo-Control, fully swivelling light panel.



Details

Live life conveniently and save energy too.

More quality of life, more safety and security and more energy saved with intelligent sensor and LED technology from STEINEL.

Light ON/OFF – automatically.

The designer-style XLED 10 LED floodlight with integrated wireless receiver for wall mounting has 10 LEDs with a total output of approx. 30 watts and 2000 lumens. It also receives wireless signals from up to 8 STEINEL Professional transmitters and can easily be interconnected on a wireless basis in the Impulser system. The STEINEL Active-Thermo-Control system continuously monitors and regulates the temperature of the LEDs. This prevents overheating and prolongs LED life expectancy (50,000 hours of operation). The flat-design light head is made of aluminium and tilts through 200° and turns through 270°. The LED floodlight provides an evenly broad radiation of light for daylight-bright illumination using a good 70 % less energy than a halogen floodlight of comparable output. The XLED 10 has won several design awards!



Including LED system



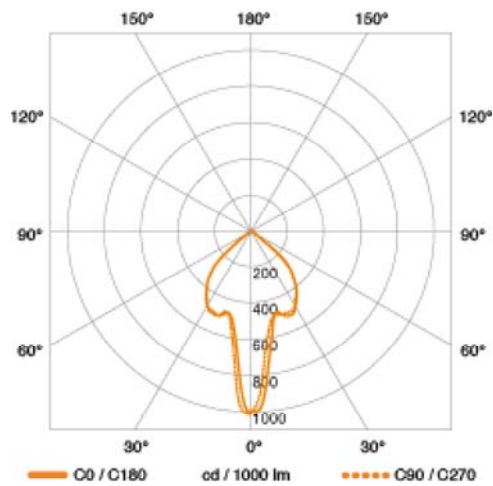
Intelligent LED (ATC) cooling system



UV-resistant plastic



Wirelessly interconnectable



Technical specifications Wireless sensor technology, IMPULSER Receiver LED floodlight XLED-FE 10 Black

European Article Number (EAN)	4007841005757
Dimensions(w x h x d):	205 x 200 x 220 mm
Voltage	230-240 V/50 Hz
Output	10 LEDs, approx. 30 W
max. output (resistive load, incandescent lamp)	800 W
max. output (uncorrected, inductive, $\cos \phi = 0.5$, e.g. fluorescent lamps)	400 W
max. output (electronic ballasts, capacitive, e.g. low-energy lamps)	max. of 4 each, ? 88 μ F
Brightness	2000 lm
Efficiency	66.6 lm/W
Light colour	4100
LED life expectancy up to	50000 h
Floodlight positioning range	270° horizontally, 200° vertically
IP rating	IP44
Protection class	I
Material	Aluminium
Version	Black
Temperature range	-20 - +50 °C
With lamp	STEINEL LED system
Lamp replaceable	No
Operating frequency	868.3 MHz (ISM band)
Programming	

As many as 8 different transmitters can be programmed at the press of a button

Application

Use outdoors