

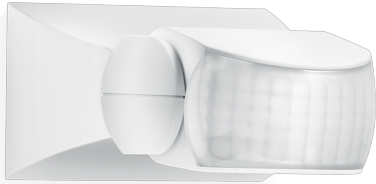
Motion detector



IS 1


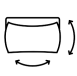
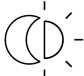



white

EAN 4007841 600310

Article number 600310



-  infrared sensor
120°
-  max. 10 m
- 500 W

500 W max.
(LED-ready)
-  IP54
-  Sensor 180° ver.,
30° hor.
-  2 - 2000 lux
-  8 sec - 35 min
-  Ideal 2 m
-  energy saving
- 3 years

manufacturer's
warranty
steinel.de/garantie3y

Function description

Targeted detection and attractive price. Infrared motion detector IS 1, for indoors and out, ideal for targeted coverage of small areas, 120° angle of coverage, reach up to 10 m, selectable time and twilight threshold, sensor turns through 30° and tilts through 180° for exact adjustment of the detection zone.

IS 1

white

EAN 4007841 600310

Article number 600310

Technical specifications

Dimensions (L x W x H)	120 x 80 x 50 mm	LED lamps	16 W
Manufacturer's Warranty	3 years	LED lamps > 2 W	64 W
Settings via	Potentiometers	LED lamps > 8 W	64 W
With remote control	Nein	Capacitive load in μF	88 μF
Version	white	Sensor Technology	Passive infrared
PU1, EAN	4007841600310	Mounting height	1,80 – 3,00 m
Type	Motion detectors	Mounting height max.	3,00 m
Application, place	Indoors, Outdoors	Optimum mounting height	2 m
Application, room	outdoors, front door, all round the building, terrace / balcony, courtyard & driveway	Detection angle	120 °
Colour	white	Angle of aperture	40 °
Colour, RAL	9001	Sneak-by guard	No
Includes corner wall mount	No	Capability of masking out individual segments	Yes
Installation site	wall, ceiling	Electronic scalability	No
Installation	Surface wiring, Wall, Ceiling	Mechanical scalability	No
IP-rating	IP54	Reach, radial	$r = 3 \text{ m} (9 \text{ m}^2)$
Protection class	II	Reach, tangential	$r = 10 \text{ m} (105 \text{ m}^2)$
Ambient temperature	-20 – 50 °C	Switching zones	260 switching zones
Material	Plastic	Twilight setting	2 – 2000 lx
Mains power supply	230 – 240 V / 50 Hz	Time setting	8 s – 35 Min.
Switching output 1, resistive	500 W	Basic light level function	No
Switching output 1, number of LEDs / fluorescent lamps	4 pcs.	Main light adjustable	No
Fluorescent lamps, electronic ballast	430 W	Twilight setting TEACH	No
Fluorescent lamps, uncorrected	500 VA	Constant-lighting control	No
Fluorescent lamps, series-corrected	500 VA	Interconnection	Yes
Fluorescent lamps, parallel-corrected	500 VA	Type of interconnection	Master/master
Switching output 1, low-voltage halogen lamps	500 VA	Interconnection via	Cable

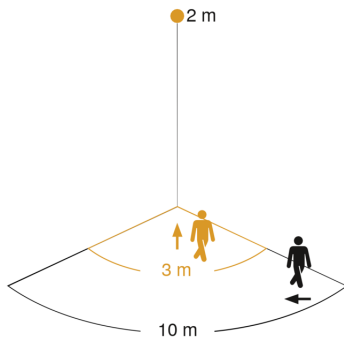
Motion detector

IS 1

white
EAN 4007841 600310
Article number 600310

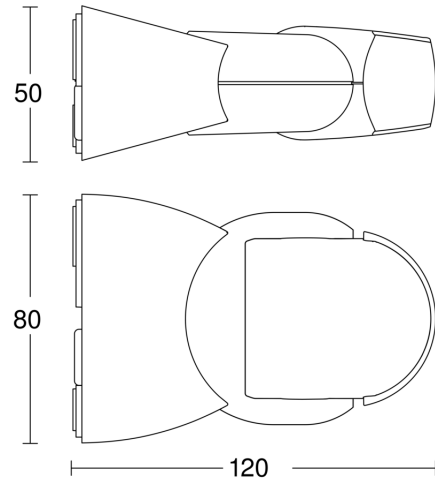


Detection Zone

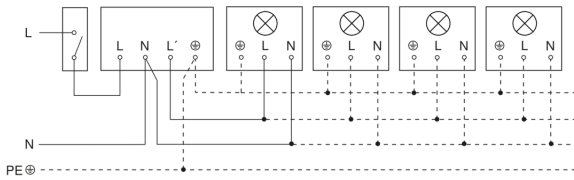


Mögliche Montagehöhe: 1,80 m – 3,00 m
Orange: radial
Schwarz: tangential

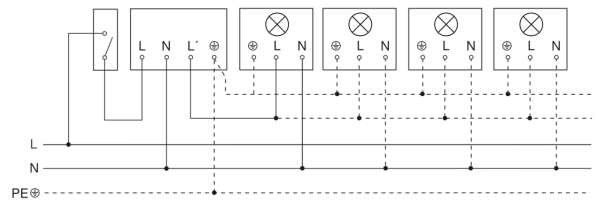
Dimension Drawing



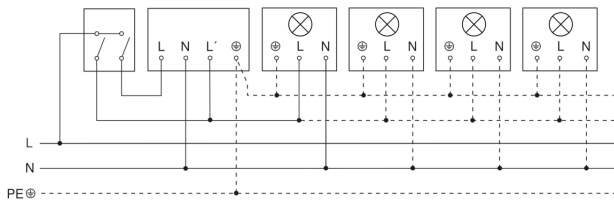
Light without neutral conductor



Light with neutral conductor



Connection using two-circuit switch for manual and automatic operation



Connection of 4-fold push-button coupler to DALI2 APC

