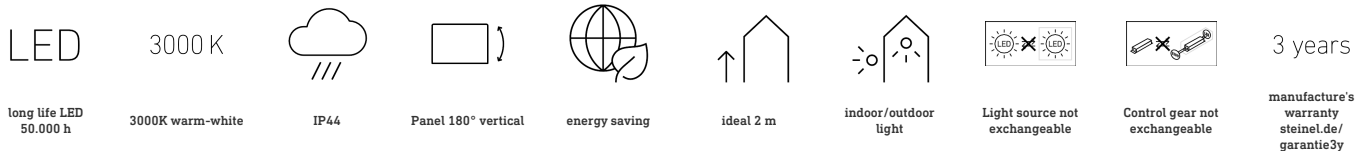
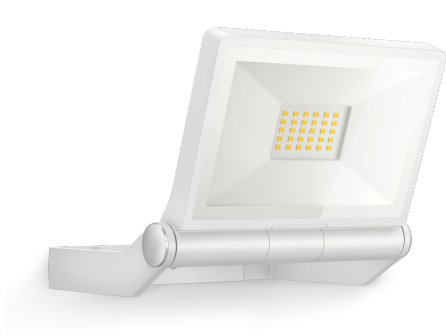


LED floodlight without sensor

XLED ONE

white
EAN 4007841 065218
Article number 065218



Function description

Astonishingly efficient. Extra-long service life. The XLED ONE wall and ceiling spot impresses with modern LED technology and provides 3000 K and 2050 lm of warm white light from an energy-saving 17,8 W. The aluminium panel can be tilted through 180°. With high-quality and powerful reflector as well as long-life LEDs (30 years).

Technical specifications

Dimensions (L x W x H)	173 x 229 x 195 mm	Mains power supply	220 – 240 V / 50 – 60 Hz
With lamp	Yes, STEINEL LED system	Photo-cell controller	No
With motion detector	No	Luminous flux total product	2050 lm
Manufacturer's Warranty	3 years	Measured luminous flux (360°)	2050 lm
Version	white	Total product efficiency	115 lm/W
PU1, EAN	4007841065218	Colour temperature	3000 K
Application, place	Outdoors	Colour variation LED	SDCM3
Application, room	outdoors, all round the building, courtyard & driveway	Lamp	LED cannot be replaced
Installation site	wall, ceiling	LED life expectancy (max. °C)	50000 h
Installation	Wall, Ceiling, Surface wiring	Service life LED L70B50 (25°)	> 36000 h
Impact resistance	IK03	Drop in luminous flux in accordance with LM80	L70B10
IP-rating	IP44	LED cooling system	Passive Thermo Control
Protection class	I	Basic light level function	No
Ambient temperature	-20 – 40 °C	Output	17,8 W
Housing material	Aluminium	Colour Rendering Index CRI	= 80
Cover material	Glass transparent		

<https://www.steinel.de>

Subject to technical modifications

02.2023 Page 1 from 2

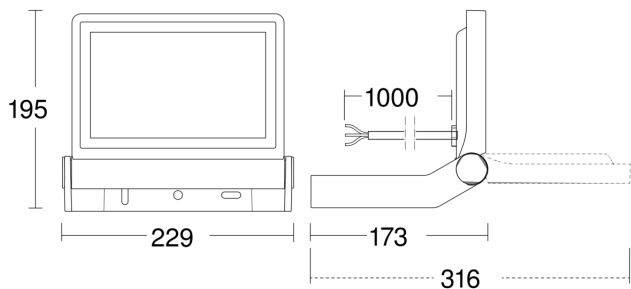
LED floodlight without sensor

XLED ONE

white
EAN 4007841 065218
Article number 065218



Dimension Drawing



Circuit diagram

