



DE STEINEL Vertrieb GmbH
Dieselstraße 80-84
33442 Herzbrock-Clarholz
Tel: +49/5245/448-188
www.steinell.de

AT Steinell Austria GmbH
Hirschstettner Strasse 19/A/2/2
A-1220 Wien
Tel.: +43/1/2023470
info@steinell.at

CH PUAG AG
Oberebenstrasse 51
CH-5620 Bremgarten
Tel.: +41/56/6488888
info@puag.ch

GB STEINEL U.K. LTD.
25, Manasty Road · Axis Park
Orton Southgate
GB-Peterborough Cambs PE2 6UP
Tel.: +44/1733/366-700
steinell@steinell.co.uk

IE Socket Tool Company Ltd
Unit 714 Northwest Business Park
Kilshane Drive · Ballycoolin · Dublin 15
Tel.: 00353 1 8809120
info@sockettool.ie

FR STEINEL FRANCE SAS
ACTICENTRE - CRT 2
Rue des Famards - Bât. M - Lot 3
F-59818 Lesquin Cedex
Tél.: +33/3/20 30 34 00
info@steinellfrance.com

NL Van Spijk B.V.
Postbus 2
5688 HP OIRSCHOT
De Scheper 402
5688 HP OIRSCHOT
Tel. +31 499 571810
info@vanspijk.nl
www.vanspijk.nl

BE VSA Belgium
Hagelberg 29
B-2440 Geel
Tel.: +32/14/256050
info@vsabelgium.be
www.vsabelgium.be

LU Minusines S.A.
8, rue de Hogenberg
L-1022 Luxembourg
Tél. : (00 352) 49 58 58 1
www.minusines.lu

ES SAET-94 S.L.
C/ Trepadella, nº 10
Pol. Ind. Castellbisbal Sud
E-08755 Castellbisbal (Barcelona)
Tel.: +34/93/772 28 49
saet94@saet94.com

IT STEINEL Italia S.r.l.
Largo Donegani 2
I-20121 Milano
Tel.: +39/02/96457231
info@steinell.it
www.steinell.it

PT F.Fonseca S.A.
Rua Joao Francisco do Casal, 87/89
Esgueira, 3800-266 Aveiro - Portugal
Tel.: +351 234 303 900
ffonseca@ffonseca.com
www.ffonseca.com

SE KARL H STRÖM AB
Verktygsvägen 4
SE-553 02 Jönköping
Tel.: +46 36 550 33 00
info@khs.se
www.khs.se

DK Roliba A/S
Hvidkærvej 52
DK-5250 Odense SV
Tel.: +45 6593 0357
www.roliba.dk

FI Oy Hedtec Ab
Lauttasaarentie 50
FI-00200 Helsinki
Puh.: +358/207 638 000
valaistus@hedtec.fi
www.hedtec.fi/valaistus

NO Vilan AS
Olaf Helsetsvai 8
N-0694 Oslo
Tel.: +47/22725000
post@vilan.no
www.vilan.no

GR PANOS Lingonis + Sons O. E.
Aristofanos 8 Str.
GR-10554 Athens
Tel.: +30/210/3212021
lygonis@otenet.gr

TR SAOS Teknoloji Elektrik Sanayi ve
Ticaret Limited Şirketi
Halil Rifat Paşa mahallesi
Yüzerhavuz Sokak
PERPA Ticaret Merkezi A Blok
Kat 5 No.313
Şişli / İSTANBUL
Tel.: +90 212 220 09 20
iletisim@saosteknoloji.com.tr
www.saosteknoloji.com.tr

CZ ELNAS s.r.o.
Oblekovice 394
CZ-67181 Znojmo
Tel.: +420/515/220126
info@elnas.cz · www.elnas.cz

PL „LL” Spółka z ograniczoną
odpowiedzialnością sp.k.
Byków, ul. Wrocławska 43
PL-55-095 Mirków
Tel.: +48 71 3980818
handlowy@langelukaszuk.pl
www.langelukaszuk.pl

HU DINOCOOP Kft
Radvány u. 24
H-1118 Budapest
Tel.: +36/1/3193064
dinocoop@dinocoop.hu

LT KVARCAS
Neries krantine 32
LT-48463, Kaunas
Tel.: +370/37/408030
info@kvarcas.lt

EE Fortronic AS
Tööstuse tee 10,
EST-61715, Tõrvandi,
Ülenurme vald, Tartumaa
Tel.: +372/7/475208
info@fortronic.ee
www.fortronic.ee

SI ELEKTRO – PROJEKT PLUS D.O.O.
Suha pri Predosljah 12
SLO-4000 Kranj
PE GRENC 2
4220 Škofja Loka
Tel.: 00386-4-2521645
GSM: 00386-40-856555
info@elektroprojektplus.si
www.priporocam.si

SK NECO SK, A.S.
Ružová ul. 111
SK-01901 Ilava
Tel.: +421/42/4 45 67 10
neco@neco.sk
www.neco.sk

RO Steinell Distribution SRL
Parc Industrial Metrom
RO-500269 Brasov
Str. Carpatilor nr. 60
Tel.: +40(0)268 53 00 00
www.steinell.ro

HR Daljinsko upravljanje d.o.o.
Bedricha Smetane 10
HR-10000 Zagreb
t/ 00385 1 388 66 77
daljinsko-upravljanje@inet.hr
www.daljinsko-upravljanje.hr

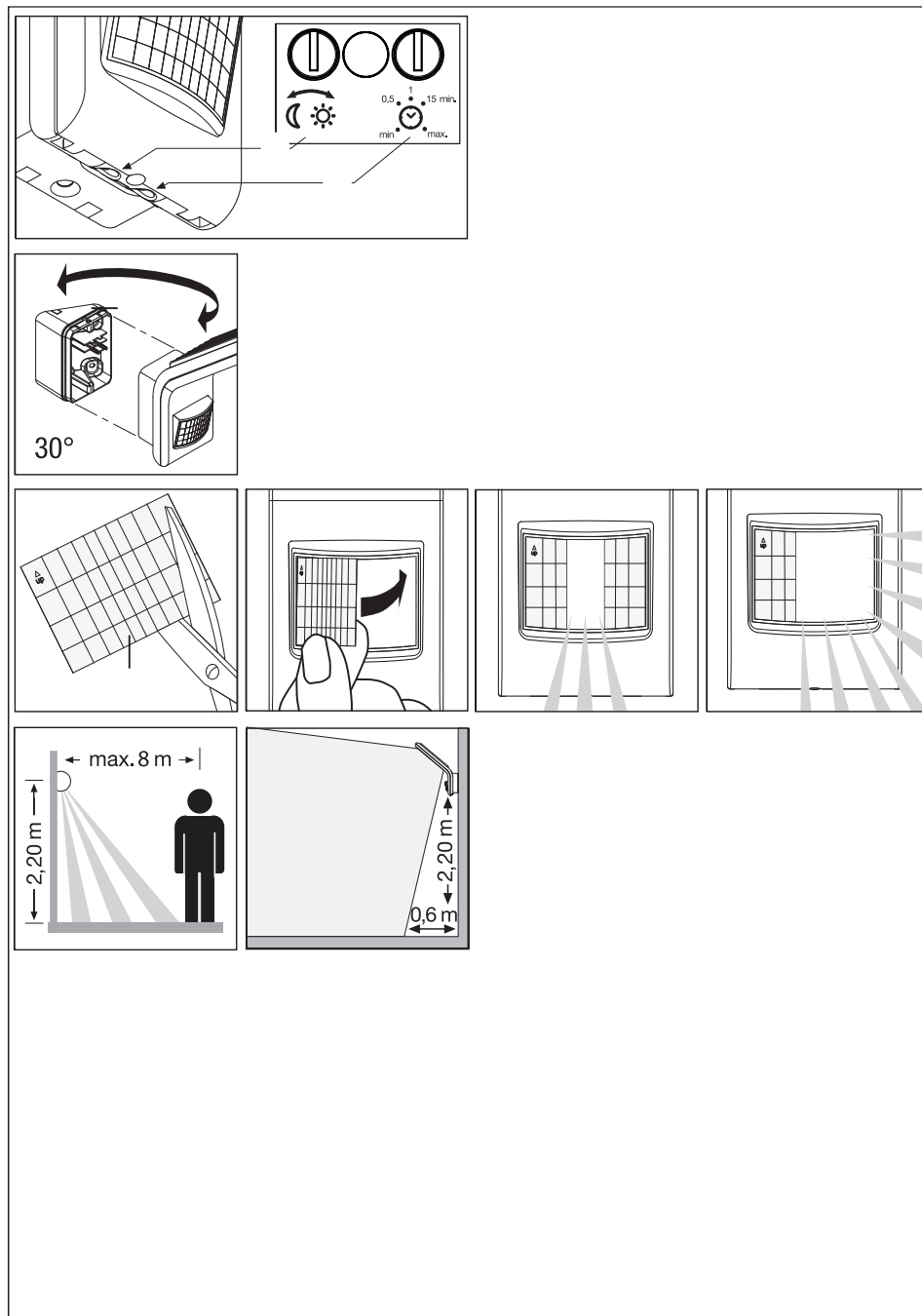
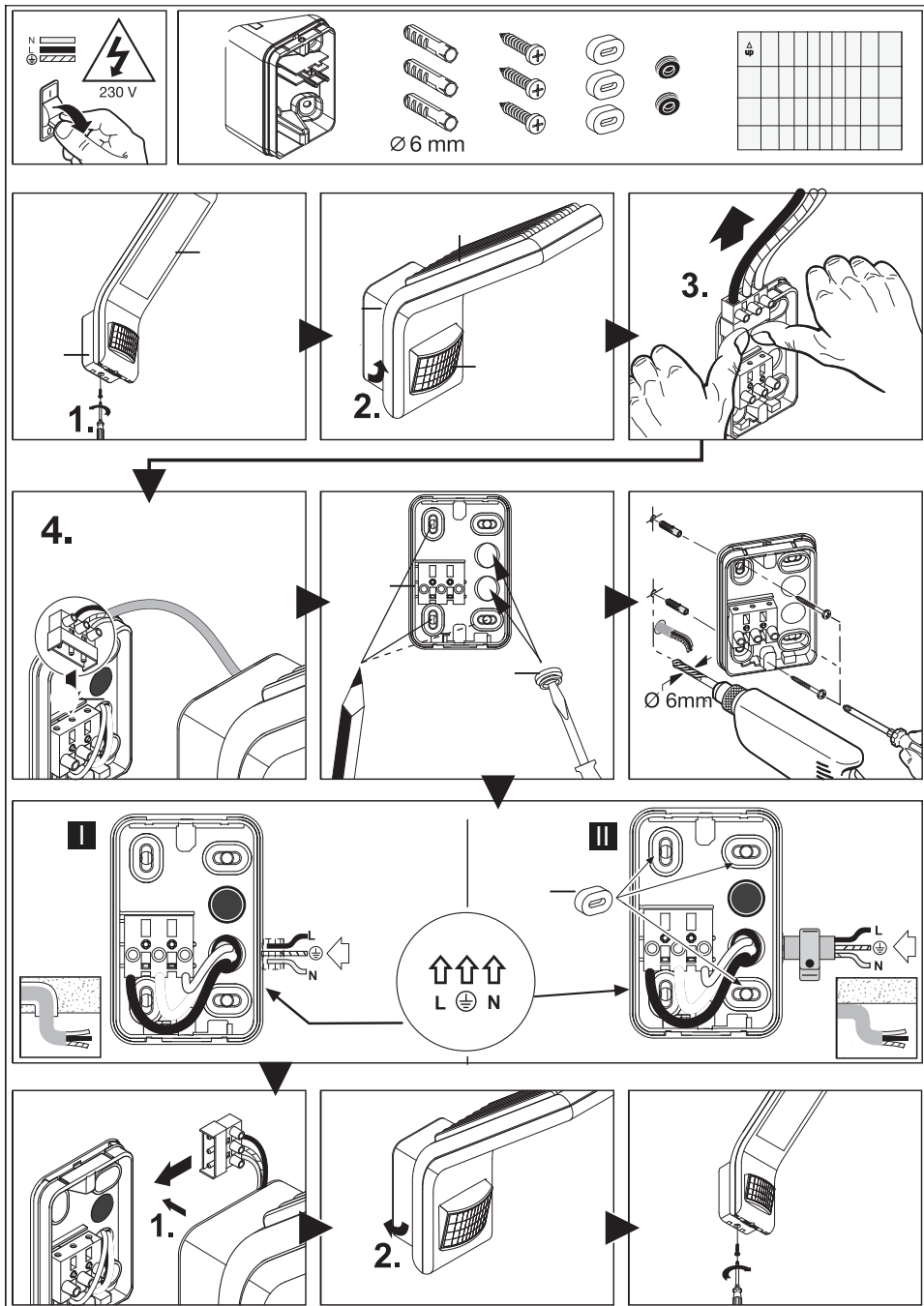
LV Ambergs SIA
Brivibas gatve 195-16
LV-1039 Riga
Tel.: 00371 67550740
www.ambergs.lv

BG ТАШЕВ-ГАЛВИНГ ООД
Бул. Климент Охридски № 68
1756 София, България
Тел.: +359 2 700 45 45 4
info@tashev-galving.com
www.tashev-galving.com

RU Best - Snab
ул.1812 года, дом 12
121127 Москва · Россия
Tel: +7 (495) 280-35-53
info@steinell.su
www.steinell.su

CN STEINEL China
Representative Office
Shanghai Rm. 25 A,
Huadu Mansion No. 838
Zhangyang Road Shanghai 200122
Tel: +86 21 5820 4486
james.chai@steinell.cn
info@steinell.cn
www.steinell.cn

110048279_06/2017_K Technische Änderungen vorbehalten. / Subject to technical modification without notice.



GB Installation instructions

Dear Customer,

congratulations on purchasing your new STEINEL sensor-switched LED floodlight and thank you for the confidence you have shown in us. You have chosen a high-quality product that has been manufactured, tested and packed with the greatest care.

Please familiarise yourself with these instructions before attempting to install the floodlight because prolonged, reliable and trouble-free operation will only be ensured if it is fitted and used properly.

We hope your new STEINEL sensor-switched LED floodlight will bring you lasting pleasure.

Principle

Movement triggers lights, alarms and many other devices. For your convenience, safety and peace of mind. Whether at home, to illuminate your property, or commercially, this sensor-switched LED floodlight is quickly installed and ready for use wherever it is installed. 70 LEDs deliver perfect illumination on a sensationally low amount of energy.

With the mounting wedge, the sensor provides an angle of coverage of 160° with a swivelling range of 30°.

Important: The most reliable way of detecting movement is to install the sensor so that it points across the direction in which a person would walk and by ensuring that no obstacles (such as trees, walls etc.) obstruct the line of vision. The reach is restricted when you walk straight towards the sensor.

System components

LED floodlight head
Wall mount with plug-in terminal
Heat sink
Sensor unit
Mounting wedge
Sealing plug
Spacer

Adhesive shrouds
Twilight setting
Time setting
Reach setting
I Mains connection, concealed wiring
II Mains connection, surface wiring

! Safety warnings

- p Disconnect the power supply before attempting any work on the unit.
- p During installation, the electrical wiring being connected must be dead. Therefore, switch off the power first and use a voltage tester to make sure the wiring is off circuit.
- p Installing these lights involves work on the mains voltage supply; this work must therefore be carried out professionally in accordance with applicable national wiring regulations and electrical operating conditions (D - VDE 0100, A - ÖVE/ÖNORM E 8001-1, - SEV 1000).
- p Do not install the unit on normally flammable surfaces.
- p Suitable for indoor and outdoor use.
- p The sensor-switched LED floodlight is only intended for wall mounting and not for ceiling mounting.
- p The floodlight housing gets warm while it is switched ON. Only adjust the angle of the LED head once it has cooled down.
- p Do not look into the LED light at short range or for any prolonged period (> 5 min.). You could damage your retina.

Installation

The site of installation should be at least 50 cm away from another light because heat radiated from this may activate the system. To obtain the specified max. reach of 8 m, the sensor should be installed at a height of approx. 2.2 m. Install the unit on a firm surface to avoid unintentional triggering.

The mains supply lead is a 3-core cable.

L = phase conductor (usually black or brown)

N = neutral conductor (usually blue)

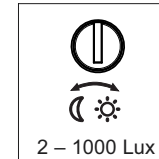
PE = protective-earth conductor (green/yellow) ⚡

Important: Connecting the conductors to the wrong terminals will produce a short circuit in the unit or your fuse box at a later stage when you come to switch the power on. In this case, you must identify the individual cables and re-connect them. A suitable mains switch for switching the light ON and OFF can be installed in the mains lead.

Information: The light source of this luminaire cannot be replaced. If the light source needs to be replaced (e.g. at the end of its service life), the complete luminaire is to be replaced.

Functions

Twilight setting
(response threshold)
(factory setting:
daylight mode 1000 lux)



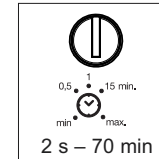
The sensor's response threshold can be infinitely varied from 2 – 1000 lux.

Control dial set to daylight operation = approx. 1000 lux.

Control dial set to twilight operation = approx. 2 lux.

To adjust the detection zone in daylight, the control dial must be set to (daylight operation).

Switch-off delay
(time setting)
(factory setting: 2 s)



Control dial set to min = shortest time (2 s)

Control dial set to max = longest time (70 min.)

When setting the detection zone, we recommend selecting the shortest time.

Reach setting/adjustment

The detection zone setting can be adjusted to suit requirements.

a) At an angle of 30° using the mounting wedge provided.

b) By using adhesive shrouds h, e.g. to mask out paths or neighbouring property.

Operation and maintenance

The unit is not suitable for burglar alarm systems as it is not tamperproof in the manner prescribed for such systems. Weather can affect operation of the sensor-switched LED floodlight. Strong gusts of wind, snow, rain and hail may cause the light to come ON

when it is not wanted because the sensor is unable to distinguish sudden changes in temperature from sources of heat.

The detector lens may be cleaned with a damp cloth if it gets dirty (do not use cleaning agents).

Technical specifications

Dimensions (H x W x D):	241 x 66 x 201 mm
Power supply:	230 – 240 V AC 50/60 Hz
Output:	70 LEDs 10.5 W
Colour temperature:	4000 K (neutral white) SDCM 4
Luminous flux:	660 lm / 62.9 lm/W
Colour rendering index:	Ra ≥ 80
Projected area:	viewed from front: 159 cm ² viewed from side: 101 cm ² without mounting wedge, 168 cm ² with mounting wedge
Weight:	0.56 kg
Angle of coverage:	160° with sneak-by guard
LED life expectancy:	> 50000 h (L70B10 to LM80)
Detection reach:	8 m
Floodlight swivelling range:	30° using mounting wedge
Time setting:	2 s – 70 min
Twilight setting:	2 – 1000 lux
IP rating:	IP 44
Protection class:	I
Temperature range:	-20°C to +40°C

Troubleshooting

Malfunction	Cause	Remedy
Sensor-switched LED floodlight without power	p" Fuse faulty, not switched ON, break in wiring	p" Fit new fuse; switch ON mains switch; check wiring with voltage tester
	p" Short circuit	p" Check connections
Sensor-switched LED floodlight will not switch ON	p" In daylight mode, twilight setting set to night mode	p" Adjust setting
	p" Mains switch OFF	p" Switch ON
	p" Fuse faulty	p" Fit new fuse, check connection if necessary p" Readjust
Sensor-switched LED floodlight will not switch OFF	p" Permanent movement in the detection zone	p" Check zone and readjust if necessary or apply shroud
Sensor-switched LED floodlight keeps switching ON and OFF	p" Animals moving in the detection zone	p" Fit shrouds to target sensor; adjust detection zone, or fit shrouds
Sensor-switched LED floodlight switches ON when it should not	p" Wind is moving trees and bushes in the detection zone	p" Change detection zone
	p" Cars in the street are being detected	p" Change detection zone
	p" Sudden temperature changes due to weather (wind, rain, snow) or air expelled from fans, open windows	p" Change detection zone, change site of installation
	p" Sensor-switched LED floodlight is moving (swaying) due to gusts of wind or heavy rain	p" Mount sensor-switched LED floodlight on a firm surface

Declaration of Conformity

This product complies with
 - Low-Voltage Directive 2014/35/EU
 - EMC Directive 2014/30/EU
 - RoHS Directive 2011/65/EU
 - WEEE Directive 2012/19/EU

Functional Warranty

This STEINEL product has been manufactured with the utmost care, tested for proper operation and safety and then subjected to random sample inspection. Steinel guarantees that it is in perfect condition and proper working order. The warranty period is 36 months and starts on the date of sale to the consumer. We will remedy defects caused by material flaws or manufacturing faults. The warranty will be met by repair or replacement of defective parts at our own discretion. The warranty shall not cover damage to wear parts, damage or defects caused by improper treatment or maintenance. Further consequential damage to other objects shall be excluded. Claims under the warranty will only be accepted if the unit is sent fully assembled and well-packed with a brief description of the fault, a receipt or invoice (date of purchase and dealer's stamp) to the appropriate Service Centre.

Service:
 Our Customer Service Department will repair faults not covered by warranty or after the warranty period. Please send the product well-packed to your nearest service station.

36 month
 FUNCTIONAL
 WARRANTY