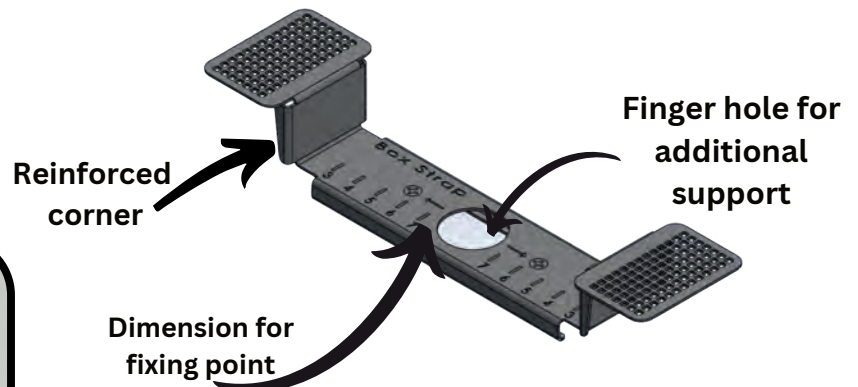
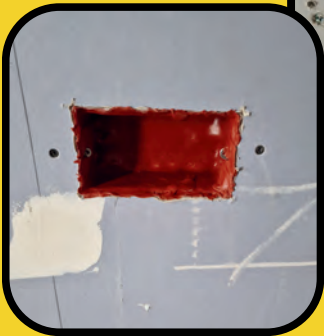


Perfect Your Installation: Opt for Our Box Strap Brackets to Achieve a Seamless Finish When Installing Metal Back Boxes for Your Clients



BENEFITS OF THE BOX STRAP BRACKET FOR ELECTRICIANS

- It removes all the unwanted earth parallel paths during testing for an EIC
- Metal boxes allow you to have a flush finish every time
- You can now install a metal back box with both sides of the wall boarded
- Faster and smoother installation process
- Hilti Fire stop putty pad CP617 compatibility

BENEFITS OF THE BOX STRAP BRACKET FOR DRYLINERS

- Build baffle boxes with no clashes
- Close your walls without cutting around back boxes
- Reduce making good

Our Box Strap brackets have been strength tested for single layer and double layer plasterboard. Please refer to our website for more info.



Downside of using a dry lining box

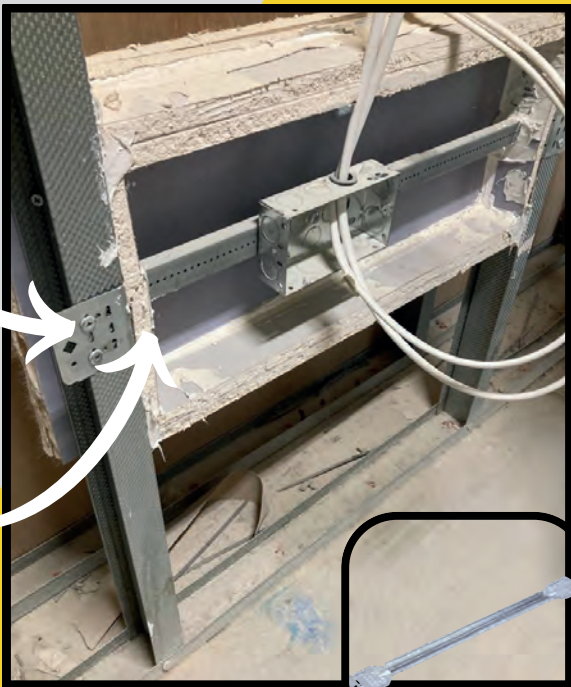
The frame prevents the electrical switch gear to have a flush finish with the finished wall



With constant usage, overtime these lugs bend backwards making the socket become loose

The drawbacks of the traditional telescopic bracket installation methods

Causes small noticeable bows on finished walls



Clashes with baffle box details



Pencil lines shown here are attempts from the dry-liner to cut around the back box on a party wall.



Gaps between back box and finished wall are common as it is difficult for a dry-liner to cut around multiple back boxes



INSTALLATION FINISH WHEN USING OUR BOX STRAP BRACKET

