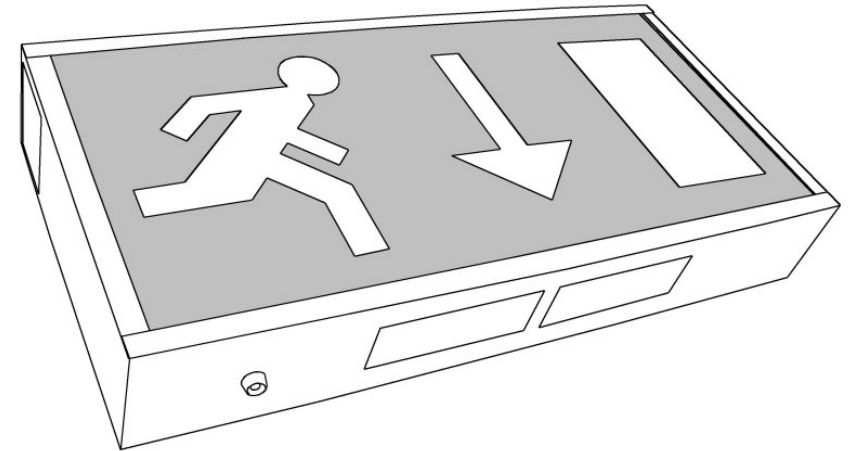
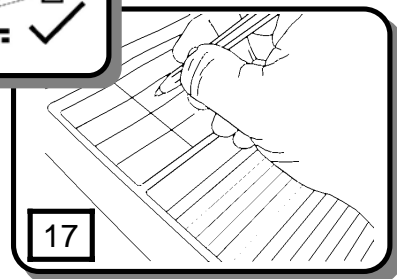
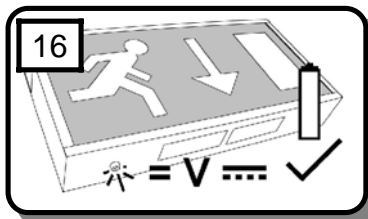
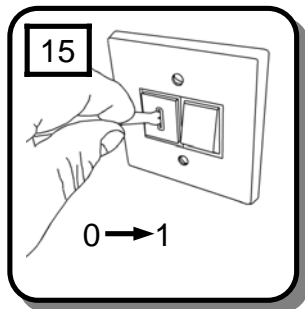
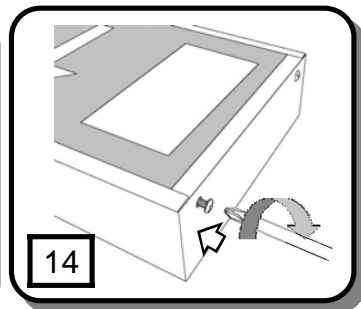
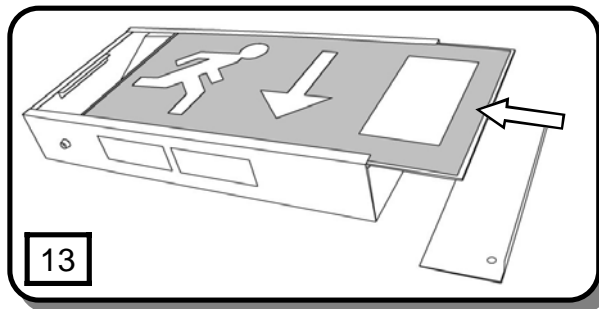
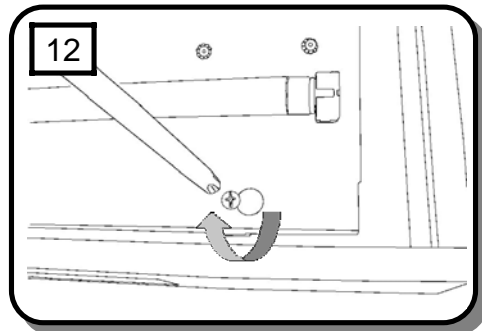
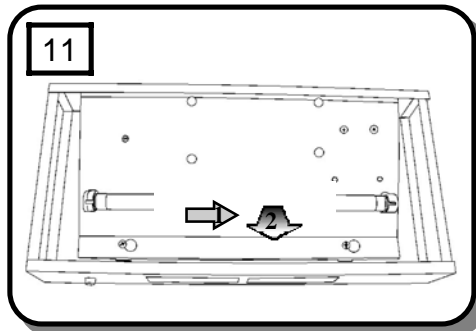
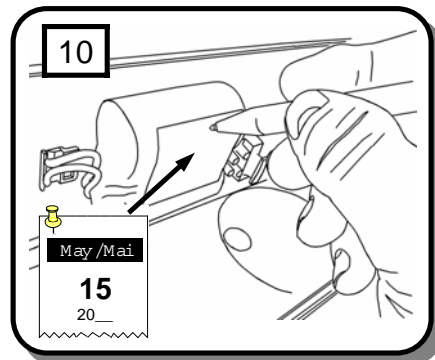
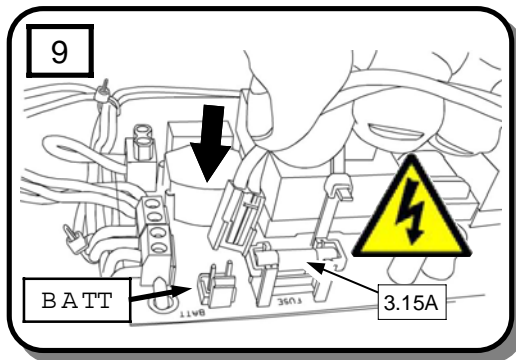


THORN



VOYAGER E EXIT BOX E3M 96502954



- | | | | |
|------|-------------------------|------|---------------------------|
| [CZ] | Montážní návod | [LT] | Montavimo Instrukcijos |
| [DE] | Montageanleitung | [LV] | Instalācijas instrukcija |
| [DK] | Monteringsvejledning | [NO] | Monteringsanvisning |
| [EE] | Paigaldusjuhend | [PL] | Instrukcja montażu |
| [FI] | Asennusohje | [RU] | Инструкция по монтажу |
| [FR] | Notice de montage | [SE] | Installationsanvisning |
| [HU] | Szerelési útmutató | [UK] | Installation Instructions |
| [IT] | Istruzioni di montaggio | | |

Cleaning:

- > Clean this light fitting only with a soft dry cloth
- > Do not use any chemical or abrasive cleaners.

Lamp replacement:

- > Switch off the electricity at the mains.
- > Remove the diffuser.
- > Twist and withdraw the tube.
- > Insert new tube.
- > Restore the power and perform operation check.
- > Replace diffuser.

Replacement lamp type:

Wattage: 8 W
Type: T5 fluorescent tube

Battery replacement:

If after routine operation check, the lamp does not remain lit for the three hour period, a new battery pack may be required.

- 1) Switch off the electricity at the mains.
- 2) Allow batteries to fully discharge then reconnect to

- 3) supply and allow to charge for 24 hours. Test again for 3 hours, if light does not remain lit change the battery pack as follows:
- 4) To replace the battery pack, it is necessary to disconnect the fitting from the mains supply and remove the fitting from its installation—see installation instructions inside.
- 5) Remove the diffuser.
- 6) Unplug the battery lead from the circuit board.
- 7) Remove the two screws that secure the battery pack in place from the rear of the fitting and lift the battery pack away from the case.
- 8) Write current date on the new battery pack.
- 9) Secure the new battery pack in place.
- 10) Plug battery pack into circuit board.
- 11) Re-fit the exit light back into position—see installation instructions inside.
- 12) Replace diffuser and end panel.
- 13) Restore power and allow to charge for 24 hours.
- 14) Perform full operation check and update test record.

Replacement battery type:

2.4V Ni-Cad
7030-0621

Eventually, you may want to replace this light fitting:

When your light fitting and or battery pack come to the end of their life or you choose to update or upgrade the fitting by replacing it, please do not dispose of it with your normal household waste, please recycle where facilities exist. When you need to dispose of this fitting, check with your retailer or local authority for suitable options. New regulations will encourage the recycling of Waste from Electrical and Electronic Equipment (European "WEEE Directive" effective August 2005).



If you experience problems:

If your light is defective or develops a fault, please return it to the place where you bought it. You can call our Helpline for advice. The Helpline will gladly give advice on any aspect of any Eterna Lighting product but may not be able to give specific instructions regarding individual installations.

If in doubt, consult a qualified electrician.



IMPORTANT!

Safety and Installation instructions

Maintained emergency
exit light 8W
convertible to non-maintained by removing link
Model(s)
EXITBOXM (EXITBOX 318M)

Specification:

Power	8W
Continuous illumination	>3 hours
Battery	2.4V 4.5Ah
Recharge time	~20 hours
Over-discharge protection	Yes

**PLEASE READ THESE INSTRUCTIONS BEFORE INSTALLING
YOUR NEW FITTING**

- -
PLEASE RETAIN FOR FUTURE REFERENCE

Read this first:

- > This light fitting must be installed in accordance with the Building Regulations making reference to the Wiring Regulations BS7671. The Building Regulations may be obtained from HMSO or viewed and downloaded from www.communities.gov.uk following the link for Building Regulations.
- > Switch off the mains before commencing installation and remove the appropriate circuit fuse.
- > Your emergency fittings should have their own separate mains supply circuit and should not share their supply with other lighting or electrical devices.
- > Suitable for indoor use only.
- > This product is suitable for installation on flammable surfaces (indicated by the "F" in a triangle)
- > Before making fixing hole(s), check that there are no obstructions hidden beneath the mounting surface such as pipes or cables.
- > The chosen location of your new fitting should allow for the product to be securely mounted and safely connected to the mains supply (lighting circuit).
- > Ensure that the fitting will be accessible after installation for maintenance.
- > If the location of your new fitting requires the provision of a new electrical supply, the supply must conform with the requirements of the Building Regulations making reference to the Wiring Regulations (see above).
- > Make connections to the electrical supply in accordance with the following code:
 Live - Brown or Red
 Neutral - Blue or Black
 Earth - Green and Yellow
- > This product must be connected to Earth.
- > You are advised at every stage of your installation to double-check any electrical connections you have made. After you have completed your installation there are electrical tests that should be carried out: these tests are specified in the Wiring Regulations (BS7671) referred to in the Building Regulations. If in doubt, consult a qualified electrician.

Installation :

- 1) Undo the screws at the right hand end of the fitting and lift off.
- 2) Slide out the front panel.
- 3) Remove the plastic plug from one of the cable entry holes.
- 4) Using the fitting as a template, mark the position of the fixing holes on your mounting surface.
- 5) Make fixing holes and fit plugs as appropriate.
- 6) Secure the fitting to the mounting surface using suitable fixings (not supplied).
- 7) Thread the supply cable through the entry point and into the fitting.
- 8) Make connection to the mains supply according to the colour code opposite. Take care not to leave any strands protruding from the terminals and to tighten all terminals securely. Ensure also that the terminals clamp onto the bare wire and not onto the insulation.
- 9) Write the current date on the battery pack.
- 10) Connect the battery pack to the circuit board.
- 11) To operate the fitting in non-maintained mode, remove the link from the terminals "SW".
- 12) If the lamp is to be switched, remove the link from between the terminals marked "SW" and connect cables to and from your switch.
- 13) Restore the power supply. The LED should light to indicate correct charging. If the link "SW" has been left in place, the fitting should also light. If you have connected a switch across the terminals "SW", test the operation of your switch.
- 14) Slide the front panel back into position and secure the retaining plate back in position using the two screws.

Operation checks :

Periodic testing should be carried out monthly by simulating a failure of supply, causing the fitting to be energised from it's battery. Interruption of the supply should be carried out by the operation of a local keyswitch or other isolation device. During this period all fittings should be examined visually to ensure that they are functioning correctly. At the end of the test period the supply shall be restored and all indicator lamps or devices checked to ensure that the normal supply has been restored.
 The duration of the simulated power failure shall be as follows:-

.....contd.

Each month :

Isolate the power supply and check the light remains illuminated for at least 45 minutes. Endorse the test record form supplied.

Once each year:

Isolate the power supply and check that the light is still illuminated after 3 hours. Endorse the test record form.

Every six months:

Isolate the power supply and check that the light is still illuminated after 1 hour. Endorse the test record form.

Please keep this instruction booklet and test record in a safe place. A fire officer or other authorised person may want to see your record of inspection and testing.

Installation, maintenance and operation check record

Location:

Installation date: _____ **Installation test duration:** _____

Installed by:

Month	Test	20____		20____		20____		20____		20____	
		Sign	Date	Sign	Date	Sign	Date	Sign	Date	Sign	Date
1	Short										
2	"										
3	"										
4	"										
5	"										
6	1 hour endurance										
7	Short										
8	"										
9	"										
10	"										
11	"										
12	3 hour endurance										

EXITBOXM Maintained emergency exit light 07031-4PA

Safety markings :



