

THORN

Punch II

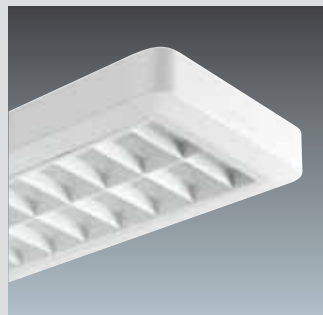
Performance lighting at an affordable price



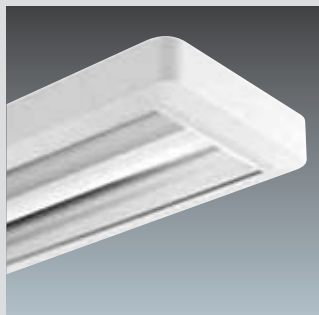
Punch II, more variety for more projects



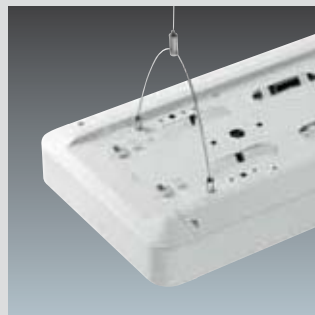
Single Mirrorbrite (DMB)



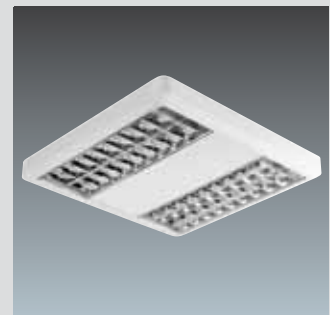
Twin white painted louvre (VWS)



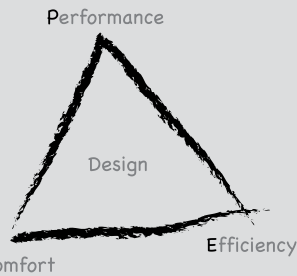
Asymmetric louvre (RAS)



Suspended direct/indirect version (D/I)



4 lamp version with Mirrorbrite louvre



Performance: visual effectiveness

- High LOR of up to 63% reduces energy consumption and number of fittings
- Mirrorbrite (DMB) louvre is EN12464 compliant
- Different louvres allow Punch II to provide the correct performance and lit effect for various applications

Efficiency: minimising the use of energy

- HF versions reduce energy consumption by 30% (compared to Switchstart)
- HF gear extends lamp life reducing waste materials
- Easy installation saves time and money

Comfort: Giving people satisfaction and stimulation

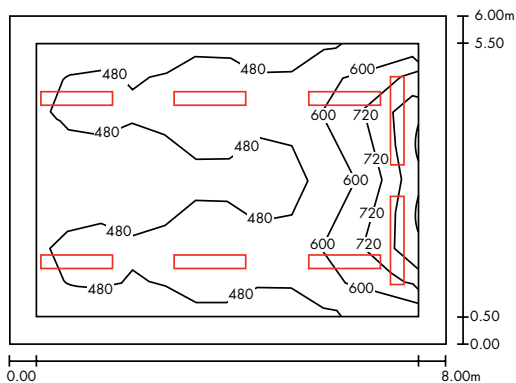
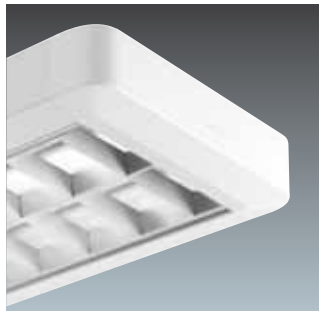
- Suspended versions provide better overall room illumination in line with LG7 recommendations
- HF versions give flicker free light and warm start capabilities
- Availability of 1- /2- and 4-lamp versions allow complete projects to be equipped with one luminaire family

Energy saving in action

Sample layout - classroom (8 x 6m)

Advantages:

- Compliance with EN12464 and Promotelec
- Surface, wire and rod suspension for different requirements
- Robust construction and materials ensure long life



Room data:
Height: 2.7m **Area:** 8 x 6m **Working plane:** 0.85m **Reflectance factor:** 70/50/20

Illumination:
E av: 537lux **Number of luminaires:** 6 x 2x36W PSB and 2 x 1x58W RAS
Longitudinal spacing: 3m **Transversal spacing:** 2.45m **Uniformity:** 0.71 **UGR:** 17

Solution 1 25% energy savings*

Installed load: 2.05 W/m²/100lux

Ordering guide:

- 6 x 96504355 - PUNCH II 2X36W T26 HF PSB plus...
- 2 x 96504345 - PUNCH II 1X58W T26 HF RAS

Solution 2 50% energy savings*

Installed load: 1.36 W/m²/100lux

Ordering guide:

- 6 x 96504355 - PUNCH II 2X36W T26 HF PSB plus...
- 2 x 96504345 - PUNCH II 1X58W T26 HF RAS plus one of...
- 1 x 96218677 - SWITCHLITE MRE SLD or...
- 1 x 96006666 - SWITCHLITE MSF SLDD

* compared to an installation with electromagnetic gear

Lamps

⇒ 18W, 36W, 58W T26 (FD)
linear fluorescent. Cap: G13


Materials/Finish

Body: sheet steel painted white
End cap: moulded in white polycarbonate
Louvres: aluminium, painted or anodised, Mirrorbrite or Satinbrite

Installation/Mounting

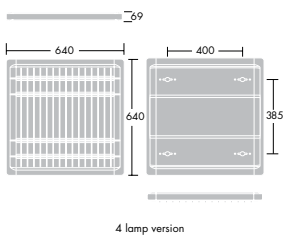
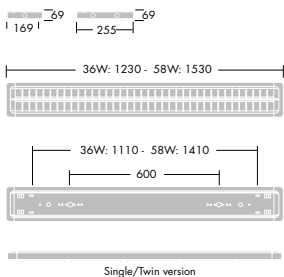
Electrical installation via piano-key terminal blocks, two cable entry points at centre of fitting. Surface versions mounted with spacers via keyholes and C-washers. BESA versions mounted via BESA box and connector bracket (included). Suspended versions delivered with twin wire Quick Lock suspension kit. Single/twin surface versions can be suspended via optional wire suspension kits, close offset rod or pendant rod kits. Continuous line mounting of luminaires via optional connect kit.

Standards

Designed and manufactured to comply with EN60598.
⊕ Class I electrical
IK07 impact resistance
960°C glow wire test
IP20 

Specification

To specify state:
Surface/suspended mounted fluorescent luminaire in single/twin/quad T26 lamp 18/36/58W versions with 63% LOR and < 500cd/m² at 65° (2x36W HF DMB) high output louvre, Switchstart/high frequency/high frequency dimmable/emergency gear. As Thorn Punch II.



Ordering Guide

Lamps to be ordered separately.
For suspended direct illumination order surface mounted version and suspension kit.
ILCOS Code: FD, Socket: G13

Description	Wt (Kg)	SAP Code
Surface mounted - 1x36W T26*		
PUNCH II 1X36W T26 CP DMB	3.7	96504322
PUNCH II 1X36W T26 HF DMB	3.1	96504329
PUNCH II 1X36W T26 HF DSB	3.1	96504326
PUNCH II 1X36W T26 CP PSB	3.8	96504321
PUNCH II 1X36W T26 HF PSB	3.2	96504325
PUNCH II 1X36W T26 CP RAS	3.7	96504323
PUNCH II 1X36W T26 HF RAS	3.1	96504332
PUNCH II 1X36W T26 CP VWS	3.9	96504320
PUNCH II 1X36W T26 HF VWS	3.3	96504324
Surface mounted - 1x58W T26*		
PUNCH II 1X58W T26 CP DMB	4.7	96504335
PUNCH II 1X58W T26 HF DMB	4.1	96504342
PUNCH II 1X58W T26 HF DSB	4.1	96504339
PUNCH II 1X58W T26 CP PSB	4.8	96504334
PUNCH II 1X58W T26 HF PSB	4.2	96504338
PUNCH II 1X58W T26 CP RAS	4.7	96504336
PUNCH II 1X58W T26 HF RAS	4.1	96504345
PUNCH II 1X58W T26 CP VWS	4.9	96504333
PUNCH II 1X58W T26 HF VWS	4.3	96504337
Surface mounted - 2x36W T26*		
PUNCH II 2X36W T26 CP DMB	4.8	96504353
PUNCH II 2X36W T26 HF DMB	4.2	96504360
PUNCH II 2X36W T26 HF DSB	4.2	96504357
PUNCH II 2X36W T26 CP PSB	4.9	96504352
PUNCH II 2X36W T26 HF PSB	4.3	96504355
PUNCH II 2X36W T26 CP VWS	5.0	96504351
PUNCH II 2X36W T26 HF VWS	4.4	96504354
PUNCH II 2X36W T26 CP TW VWS	5.0	96238855
PUNCH II 2X36W T26 HF TW PSB	4.3	96238857
PUNCH II 2X36W T26 CP TW DMB	4.8	96238938
PUNCH II 2X36W T26 CP TW PSB	4.9	96238939
Surface mounted - 2x58W T26*		
PUNCH II 2X58W T26 CP DMB	5.8	96504371
PUNCH II 2X58W T26 HF DMB	5.2	96504378
PUNCH II 2X58W T26 HF DSB	5.2	96504375
PUNCH II 2X58W T26 CP PSB	5.9	96504370
PUNCH II 2X58W T26 HF PSB	5.3	96504373
PUNCH II 2X58W T26 CP VWS	6.0	96504369
PUNCH II 2X58W T26 HF VWS	5.4	96504372
PUNCH II 2X58W T26 CP TW VWS	6.0	96238856
PUNCH II 2X58W T26 HF TW PSB	5.3	96238858
PUNCH II 2X58W T26 CP TW DMB	5.8	96238940
PUNCH II 2X58W T26 CP TW PSB	5.9	96238941
Surface mounted - 4x18W T26*		
PUNCH II 4X18W T26 CP DMB	5.7	96504398
PUNCH II 4X18W T26 HF DMB	4.5	96504404
PUNCH II 4X18W T26 HF DSB	4.5	96504401
PUNCH II 4X18W T26 CP PSB	5.8	96504397
PUNCH II 4X18W T26 HF PSB	4.6	96504400
PUNCH II 4X18W T26 CP VWS	5.9	96504396
PUNCH II 4X18W T26 HF VWS	4.7	96504399

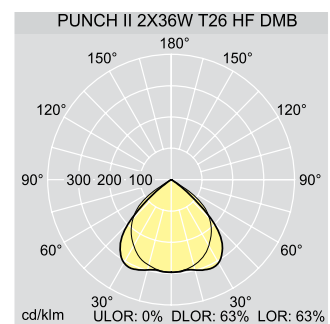
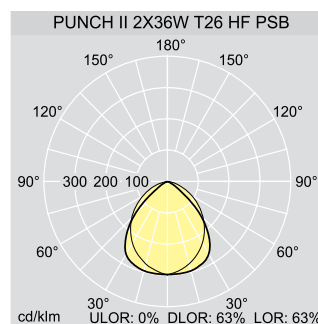
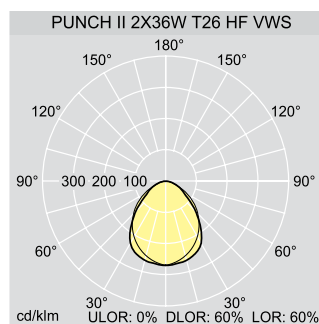
Description	Wt (Kg)	SAP Code
Suspended, suspension kit included - 1x36W T26*		
PUNCH II DI 1X36W T26 CP DMB	3.7	96504693
PUNCH II DI 1X36W T26 HF DMB	3.1	96504697
PUNCH II DI 1X36W T26 HF DSB	3.1	96504700
PUNCH II DI 1X36W T26 CP PSB	3.8	96504694
PUNCH II DI 1X36W T26 HF PSB	3.2	96504703
PUNCH II DI 1X36W T26 CP RAS	3.7	96504695
PUNCH II DI 1X36W T26 HF RAS	3.1	96504704
PUNCH II DI 1X36W T26 CP VWS	3.9	96504696
PUNCH II DI 1X36W T26 HF VWS	3.3	96504705
Suspended, suspension kit included - 1x58W T26*		
PUNCH II DI 1X58W T26 CP DMB	4.7	96504706
PUNCH II DI 1X58W T26 HF DMB	4.1	96504710
PUNCH II DI 1X58W T26 HF DSB	4.1	96504713
PUNCH II DI 1X58W T26 CP PSB	4.8	96504707
PUNCH II DI 1X58W T26 HF PSB	4.2	96504716
PUNCH II DI 1X58W T26 CP RAS	4.7	96504708
PUNCH II DI 1X58W T26 HF RAS	4.1	96504717
PUNCH II DI 1X58W T26 CP VWS	4.9	96504709
PUNCH II DI 1X58W T26 HF VWS	4.3	96504718
Suspended, suspension kit included - 2x36W T26*		
PUNCH II DI 2X36W T26 CP DMB	4.8	96504723
PUNCH II DI 2X36W T26 HF DMB	4.2	96504726
PUNCH II DI 2X36W T26 HF DSB	4.2	96504729
PUNCH II DI 2X36W T26 CP PSB	4.9	96504724
PUNCH II DI 2X36W T26 HF PSB	4.3	96504732
PUNCH II DI 2X36W T26 CP VWS	5.0	96504725
PUNCH II DI 2X36W T26 HF VWS	4.4	96504734
Suspended, suspension kit included - 2x58W T26*		
PUNCH II DI 2X58W T26 CP DMB	5.8	96504741
PUNCH II DI 2X58W T26 HF DMB	5.2	96504744
PUNCH II DI 2X58W T26 HF DSB	5.2	96504747
PUNCH II DI 2X58W T26 CP PSB	5.9	96504742
PUNCH II DI 2X58W T26 HF PSB	5.3	96504750
PUNCH II DI 2X58W T26 CP VWS	6.0	96504743
PUNCH II DI 2X58W T26 HF VWS	5.4	96504752

*E3 (3-hour emergency versions) and BESA (Mounting via BESA Box) available on request
DI - Direct/Indirect, CP - Electromagnetic Ballast (compensated), HF - High Frequency Ballast, DMB - Double Parabolic Mirrorbrite louvre, DSB - Double Parabolic Satinbrite louvre, PSB - Flat Satinbrite louvre, RAS - Asymmetric louvre, VWS - White painted louvre TW - Through wired (with 5 pole terminal block)

Accessories

Description		SAP Code
PUNCH II MSW1 1500mm	Wire suspension kit	96238862
PUNCH II CLOSE OFFSET ROD KIT 150mm	Close offset kit	96238860
PUNCH II PENDANT ROD KIT 1450mm	Pendant rod kit	96238859
PUNCH II ROD SUSPENSION BRACKETS*	Rod suspension bracket	96238861
PUNCH II WHITEBOARD SUSPENSION KIT	Whiteboard suspension kit	96238614
PUNCH II CONNECT KIT - TWIN	Twin connect kit for continuous line mounting	96238615
PUNCH II CONNECT KIT - SINGLE	Single connect kit for continuous line mounting	96238616
SWITCHLITE MSF SLDD	Surface mounted photocell	96006666
SWITCHLITE MRE SLD	Recessed presence detector	96218677

* To be used with existing installations



THORN

Lighting people and places

Thorn Lighting Main Offices

Thorn Academy of Light

Green Lane Industrial Estate, Spennymoor
County Durham DL16 6HL, UK
Tel: (44) 1388 420 042
E-mail: academy@thornlighting.com
Website: www.thornacademyoflight.com

Australia

Thorn Lighting Pty Limited
43 Newton Road, Wetherill Park
NSW 2164
Tel: (02) 8786 6000
Fax: (02) 9612 2700
E-mail: infoaustralia@thornlighting.com
Website: www.thornlighting.com.au

Austria

Thorn Licht GmbH
Donau-City-Straße 1,
1220 Wien, Austria
Tel: (43) 1 202 66 11
Fax: (43) 1 202 66 11 82712
E-mail: office.at@thornlighting.com
Website: www.thornlighting.at

China

Thorn Lighting (Guangzhou) Operations Ltd,
No.12 Lian Yun Road, Eastern Section,
GETDD, Guangzhou 510530, China
Tel: (86) 20 3228 2706
Fax: (86) 20 3228 1777
E-mail: sales.cn@thornlighting.com

Thorn Lighting (Tianjin) Co. Ltd
332 Hongqi Road, Tianjin 300190,
China
Tel: (86) 22 8369 2303
Fax: (86) 22 8369 2302
E-mail: info.tj@thornlighting.com

Czech Republic

Thorn Lighting CS spol. s.r.o.,
Na Březince 6/930, 150 00 Praha 5
Czech Republic
Tel: (420) 224 315 252
Fax: (420) 233 326 313
E-mail: thorn.cz@thornlighting.com
Website: www.thornlighting.cz

Denmark

Thorn Lighting A/S
Kanonbådsvej 12B, Holmen,
1437 København K, Denmark
Tel: (45) 76 96 36 00
Fax: (45) 76 96 36 01
E-mail: info.dk@thornlighting.com
Website: www.thornlighting.dk

France

Thorn Europhane SA
156 Boulevard Haussmann,
Cedex 08, Paris 75379, France
Tel: (33) 1 49 53 6262
Fax: (33) 1 49 53 6240
Website: www.thornlighting.fr

Hong Kong

Thorn Lighting (Hong Kong) Limited
Unit 4301, Level 43, Tower 1,
Metropolaza, 223 Hing Fong Road,
Kwai Chung, N.T., Hong Kong
Tel: (852) 2578 4303
Fax: (852) 2887 0247
E-mail: info.hk@thornlighting.com

India

Thorn Lighting India Pvt. Ltd.
501, 5th Floor, Tanishka
Opp. Gundecha Industrial Estate
Akurli Road, Kandivali (E), Mumbai – 400 101, India
Tel: (91) 22-67839100
Fax: (91) 22-67839106
E-mail: international_sales@thornlighting.com
Website: www.thornlighting.com

International Sales

Thorn Lighting Limited
Silver Screens, Elstree Way, Borehamwood,
Hertfordshire, WD6 1FE, UK
Tel: (44) 20 8732 9800
Fax: (44) 20 8732 9819
E-mail: international_sales@thornlighting.com
Website: www.thornlighting.com

Ireland

Thorn Lighting (Ireland) Limited
Century House
Harolds Cross Road
Dublin 6W
Tel: (353) 1 4922 877
Fax: (353) 1 4922 724
E-mail: dublinsales@thornlighting.com
Website: www.thornlighting.co.uk

Italy

Thorn Europhane Spa
Via G Di Vittorio, 2, Cadriano di Granarolo,
Bologna 40057, Italy
Tel: (39) 051 763391
Fax: (39) 051 763088
E-mail: info@thornlighting.it
Website: www.thornlighting.it

New Zealand

Thorn Lighting (NZ) Ltd
399 Rosebank Road, Avondale, Auckland 1026
PO Box 71134, Rosebank, Auckland 1348
Tel: (64) 9 828 7155
Fax: (64) 9 828 7591
E-mail: info.NZ@thornlighting.com
Website: www.thornlighting.co.nz

Norway

Thorn Lighting AS
Strømsveien 344, 1081 Oslo,
Norway
Tel: (47) 22 82 07 00
Fax: (47) 22 82 07 01
E-mail: info.no@thornlighting.com
Website: www.thornlighting.no

Poland

Thorn Lighting Polska Sp.z.o.o.,
Ul. Gazowa 26A, Wrocław 50-513,
Poland
Tel: (48) 71 7833 740
Fax: (48) 71 3366 029
E-mail: thorn.pl@thornlighting.com
Website: www.thornlighting.pl

Russia

Thorn Lighting
Novoslobodskaya Str., 21, office 406
Business Center "Novoslobodskaya 21",
Moscow 127030, Russia
Tel: (7) 495 981 35 41
Fax: (7) 495 981 35 42
E-mail: kristina.skachinskaya@thornlighting.com
Website: www.thornlighting.ru

Singapore

Thorn Lighting (Singapore) Pte Ltd
5 Kaki Bukit Crescent, 04-02 Koyotech
Building, 416238 Singapore
Tel: (65) 6844 5800
Fax: (65) 6745 7707
E-mail: info.sg@thornlighting.com

Sweden

Thorn Lighting AB
Industrigatan, Box 305, SE-261 23
Landskrona, Sweden
Tel: (46) 418 520 00
Fax: (46) 418 265 74
E-mail: info.se@thornlighting.com
Website: www.thornlighting.se

United Arab Emirates

Thorn Lighting Ltd Dubai
Al Shoala Building, Office 301,
Block E, Airport road, P.O. Box 1200,
Deira, Dubai, UAE
Tel: (971) 4 2940181
Fax: (971) 4 2948838
E-mail: tluae@emirates.net.ae
Website: www.thornlighting.com

Thorn Gulf LLC

Al Shoala Building, Office 301/2, Block E,
Airport road, P.O. Box 22672, Deira,
Dubai, UAE
Tel: (971) 4 2948938
Fax: (971) 4 2948838
E-mail: thorng@emirates.net.ae
Website: www.thornlighting.com

United Kingdom

Thorn Lighting Limited
Silver Screens, Elstree Way, Borehamwood,
Hertfordshire, WD6 1FE, UK
Tel: (44) 20 8732 9800
Fax: (44) 20 8732 9801
E-mail: brochures.uk@thornlighting.com

Thorn Olympics Sports Lighting Team

Tel: 07785 251 438
E-mail: olympics.team@thornlighting.com
Website: www.thornlighting.co.uk

www.thornlighting.com

Thorn Lighting is constantly developing and improving its products. All descriptions, illustrations, drawings and specifications in this publication present only general particulars and shall not form part of any contract. The right is reserved to change specifications without prior notification or public announcement. All goods supplied by the company are supplied subject to the company's General Conditions of Sale, a copy of which is available on request. All measurements are in millimetres and weights in kilograms unless otherwise stated.

Publication No: 479 (IS) Publication Date: 02/10