

TWIN SPOT 8W x2 LED LIGHT

Model: LED200FLWH - White

Model: LED200FLB - Black



Installation & Operating Instructions

1. Designated Use

- LED200FL is an outdoor LED light.
- Suitable for installation on walls.
- Simple plug in wall plate for easy & safe connection.
- Suitable for a wide range of locations: corridors, gardens, staircases, entrances, garages, outdoor parking areas etc.



WARNING

2. Basic Safety Instruction

Danger of death through electric shock or fire!



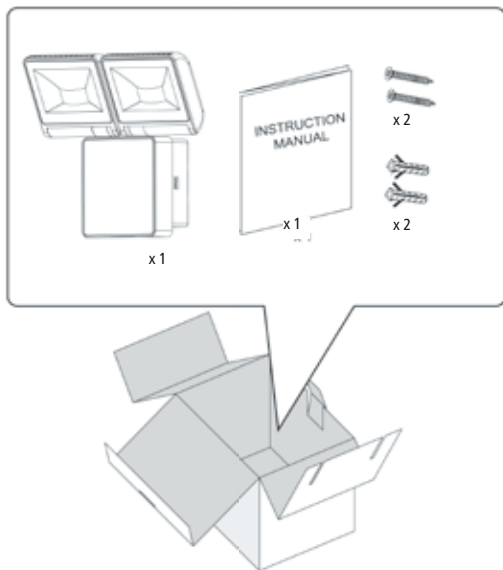
- Must only be installed by qualified electricians.
- Avoid the metal parts of the device due to potentially high temperature.
- The device conforms to EN60598 for designated installation; IP44 in accordance with EN 60598 and IEC62471 Photo biological safety of lamps and lamp system.
- Designed for use in normal environments.
- Intended for outdoor installation.
- Energy saving.
- Long LED bulb life.

Index :

- | | |
|--------|--|
| Page 2 | Contents & Tools required. |
| Page 3 | Product dimensions. |
| Page 4 | Installation procedure. |
| Page 5 | Lamp adjustment, High temperature in lamp. |

3. Contents:

Whats in the box?



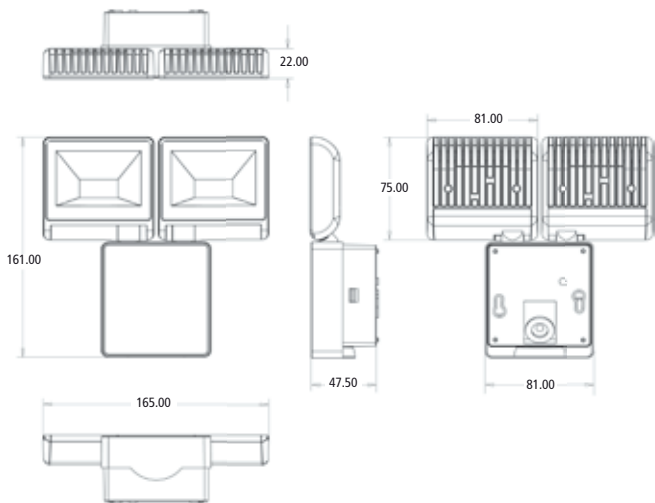
2

4. Tools Required:

Tools/equipment needed for installation.



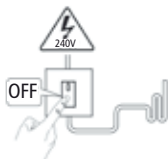
5. Product Dimensions:



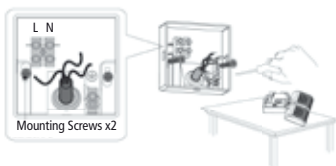
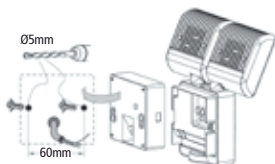
6. Installation Procedure:

Switch off the power.

Twist-open the wall plate.

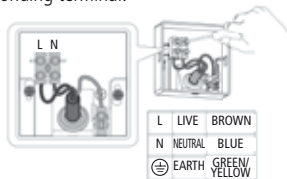


Fix the wall plate to the wall.

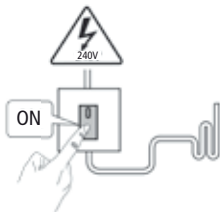


4 Feed the wires through rubber gasket of the wall plate and attach to corresponding terminal.

Attach the device to the wall plate.

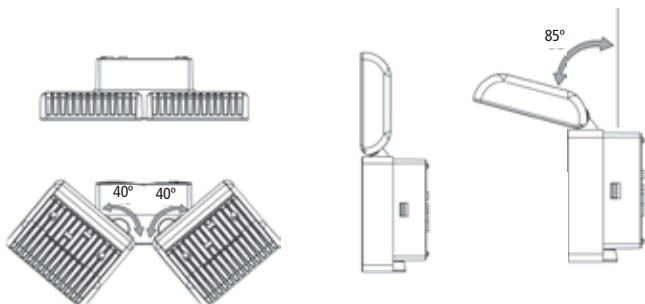


Switch On the power.



Lamp Adjustment

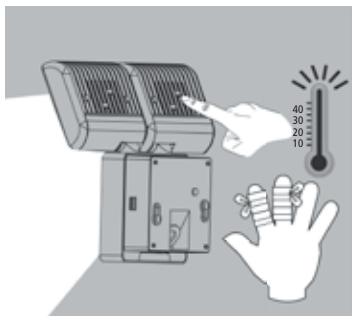
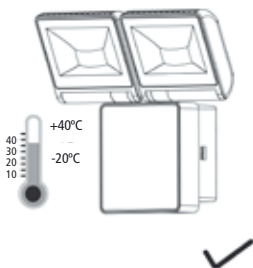
The lamp can be tilted down 85 deg. and pan outwardly 40 deg.



WARNING

High Temperature

The temperature of the lamp is very high during operating. You will get hurt, if you touch the heat sink.



3 Year Guarantee

In the unlikely event of this product becoming faulty due to defective material or manufacture within 3 years of the date of purchase, please return it to your supplier in the first year with proof of purchase and it will be replaced free of charge. For years 2 and 3 or any difficulty in the first year telephone the helpline on 020 8450 0515.



HELPLINE
020 8450 0515

or email helpline@timeguard.com



For a product brochure please contact:

Timeguard Limited.

Victory Park, 400 Edgware Road,
London NW2 6ND

Sales Office: 020 8452 1112
or email csc@timeguard.com

A **theben** Group Company

Designed in the U.K. 67-058-420