

HELPLINE
020 8450 0515
 or email helpline@timeguard.com



For a product brochure please contact:

Timeguard Limited.
 Victory Park, 400 Edgware Road,
 London NW2 6ND
 Sales Office: 020 8452 1112
 or email csc@timeguard.com

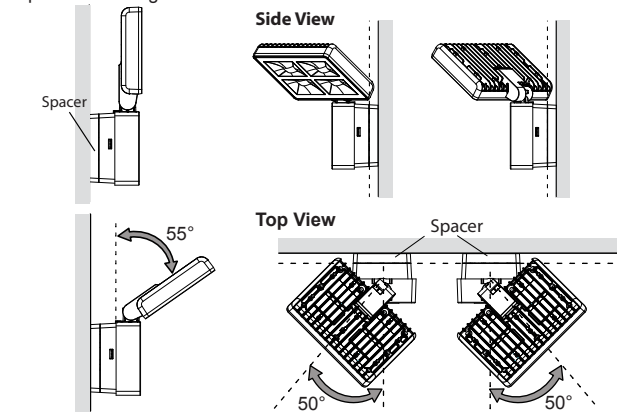
A **theben**® Group Company

67.058.487

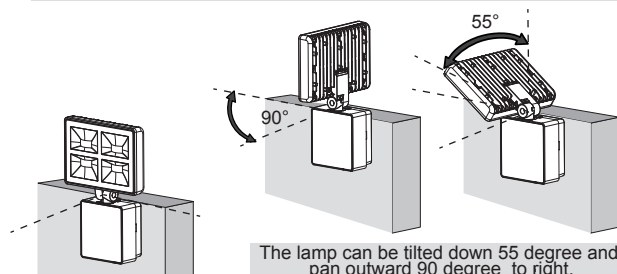
5

Lamp adjustment

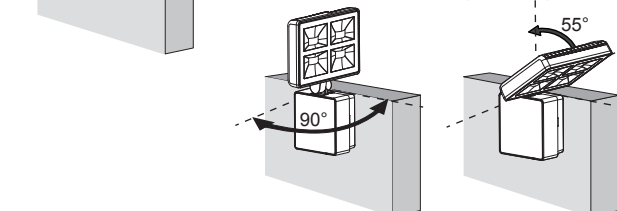
The lamp can be tilted down 55 degree and pan outward 50 degree with the spacer or 40 degrees without.



The lamp can be tilted down 55 degree pan outward 90 degree to left



The lamp can be tilted down 55 degree and pan outward 90 degree to right.

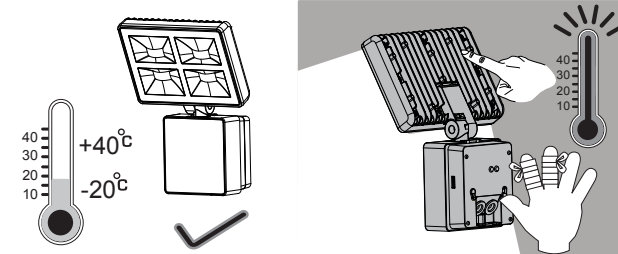


6

WARNING

High Temperature

The temperature of the lamp is very high during operation. You will get hurt if you touch the heat sink.



TECHNICAL SPECIFICATIONS	
Supply	220 - 240V 32W
Output	2000 Lumens
Weatherproof	IP55

3 Year Guarantee

In the unlikely event of this product becoming faulty due to defective material or manufacture within 3 years of the date of purchase, please return it to your supplier in the first year with proof of purchase and it will be replaced free of charge. For years 2 and 3 or any difficulty in the first year telephone the helpline on 020 8450 0515.



32W LED FLOODLIGHT

Model: LED400FLW - White
 Model: LED400FLB - Black



Installation & Operating Instructions

1. Designated Use

- LED400FL is an outdoor LED light.
- Suitable for installation on walls.
- Simple plug in wall plate for easy & safe connection.
- Suitable for a wide range of locations: corridors, gardens, staircases, entrances, garages, outdoor parking areas etc.

WARNING

2. Basic Safety Instruction

Danger of death through electric shock or fire!

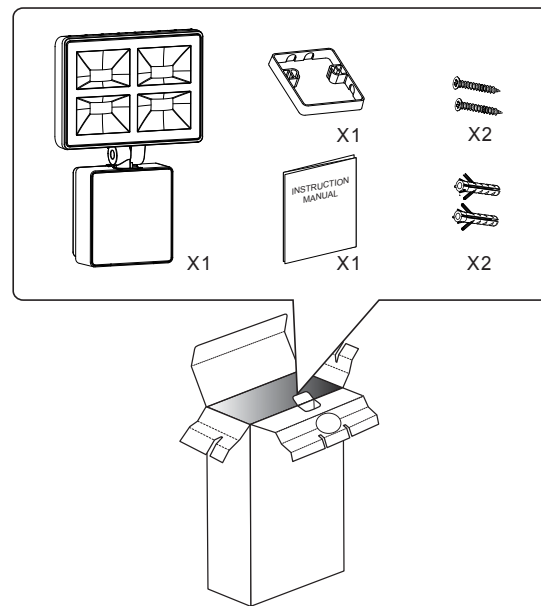
- Must only be installed by qualified electricians.
- Avoid the metal parts of the device due to potentially high temperature.
- The device conforms to EN60598 for designated installation; IP55 in accordance with EN 60529 and IEC62471 Photo biological safety of lamps and lamp system.
- Designed for use in normal environments.
- Intended for outdoor installation.
- Energy saving.
- Long LED bulb life.

Index :

- Page 2 Contents & Tools required.
- Page 3 Product dimensions.
- Page 4 Installation procedure.
- Page 5 Lamp adjustment
- Page 6 High temperature in lamp.

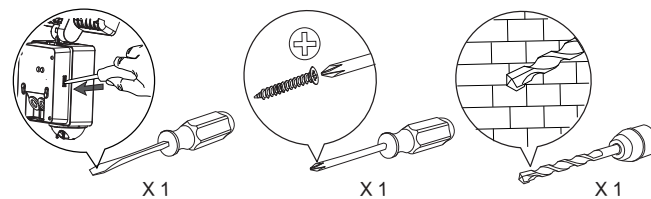
3. Contents:

What's in the box?

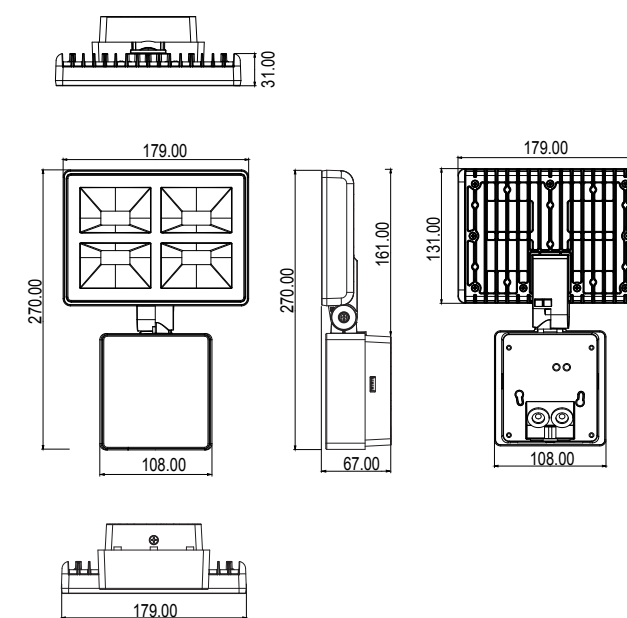


4. Tools required:

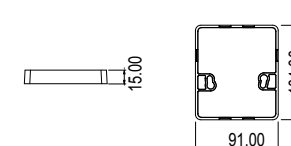
Tools / Equipment need for installation.



5. Product Dimensions:

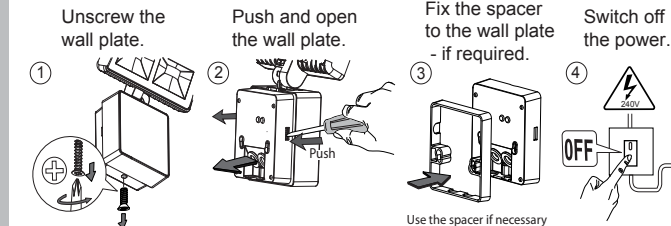


Spacer dimension:

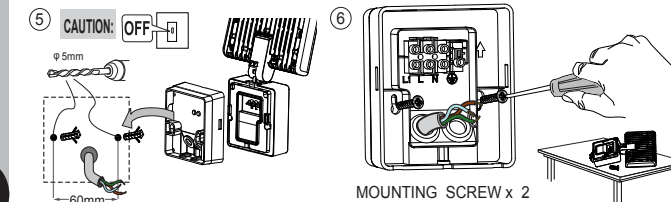


* The Spacer is an optional fitting which gives maximum Pan angle.

6. Installation Procedure:



Fix the spacer with the wall plate to the wall or the wall plate alone.



Feed the wires through rubber gasket of the wall plate with spacer and attach to corresponding terminal.

CONNECTION:
(See connection diagram)
Connect the mains supply cable to the terminal block on the backplate as follows.

L	LIVE	BROWN
N	NEUTRAL	BLUE
⊕	EARTH	GREEN / YELLOW

