

HELPLINE
020 8450 0515
or email helpline@timeguard.com



For a product brochure please contact:

Timeguard Limited.
Victory Park, 400 Edgware Road,
London NW2 6ND
Sales Office: 020 8452 1112
or email csc@timeguard.com

A **theben** Group Company

67.058.486

7

Knob Settings

LED400PIR has two adjustment knobs:
Time and Lux at the bottom of the detector head.

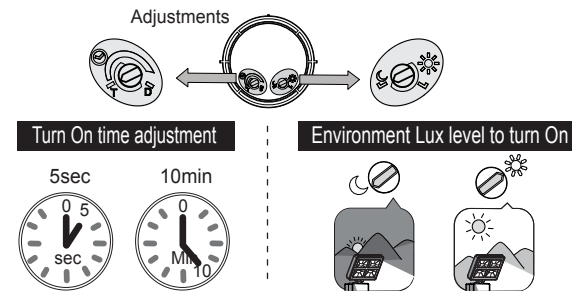
- Adjust knobs carefully with hand.

TIME knob setting

- You can set the time knob from 5 sec to about 10 min, LED400PIR will turn On the lamp, for the time duration set after each detected movement.
- Adjust the knob as desired.

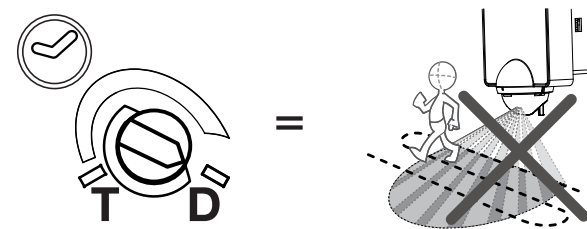
LUX knob setting

- When setting the Lux knob at "MOON", LED400PIR will only operate in the dark.
- When setting the Lux knob at "SUN", LED400PIR will operate in any light level.



Dusk Setting (Time knob setting)

- When setting the Time knob to "D", the motion detector of LED400PIR won't function.
- The lamp will operate depending on the "LUX" level, ie Dusk to Dawn..



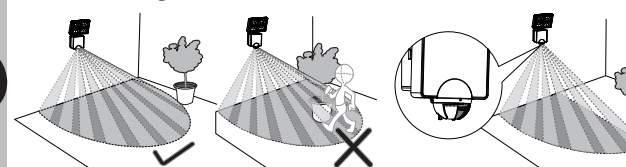
8



Setting Advise



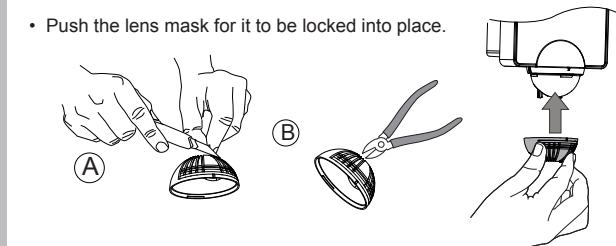
Lens masking



The purpose of the lens mask is to mask out areas not desired for detection.

Lens mask fitting procedure:

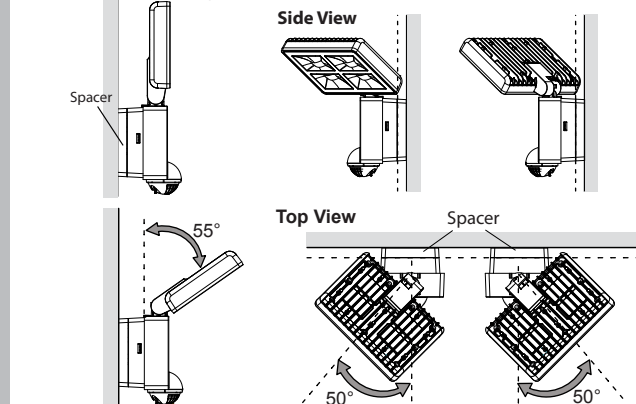
- Use a penknife or pliers to cut out lens mask segment, exposing area for detection.
- Attach the lens mask to the detector head.
- Push the lens mask for it to be locked into place.



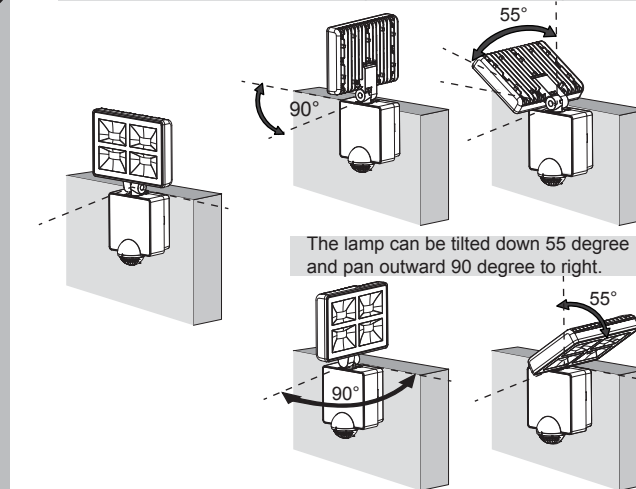
9

Lamp adjustment

The lamp can be tilted down 55 degree and pan outward 50 degree with the spacer or 40 degrees without.



The lamp can be tilted down 55 degree pan outward 90 degree to left

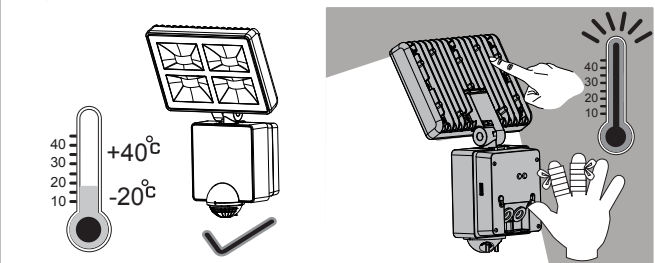


10

WARNING

High Temperature

The temperature of the lamp is very high during operation. You will get hurt if you touch the heat sink.



TECHNICAL SPECIFICATIONS:	
Supply	220 - 240V 32W
Output	2000 Lumens
Weatherproof	IP55
External	Up to 5 LED 400 uncontrolled lamps
Other loads	
LED lamp, PF < 0.6	50W Max
LED lamp, PF > 0.9	200W Max
Halogen lamp load	1000W Max
CFL	120W Max
Fluorescent tube w/o PF correction	200W Max

3 Year Guarantee

In the unlikely event of this product becoming faulty due to defective material or manufacture within 3 years of the date of purchase, please return it to your supplier in the first year with proof of purchase and it will be replaced free of charge. For years 2 and 3 or any difficulty in the first year telephone the helpline on 020 8450 0515.



32W LED PIR FLOODLIGHT

Model: LED400PIRW - White
Model: LED400PIRB - Black



1. Designated Use

- LED400PIR is an outdoor motion detector for automatic LED lighting control
- Suitable for installation on walls
- Simple plug in wall plate for easy & safe connection
- Suitable for a wide range of locations: corridors, gardens, staircases, entrances, garages, outdoor parking areas etc.

2. Basic Safety Instruction

Danger of death through electric shock.

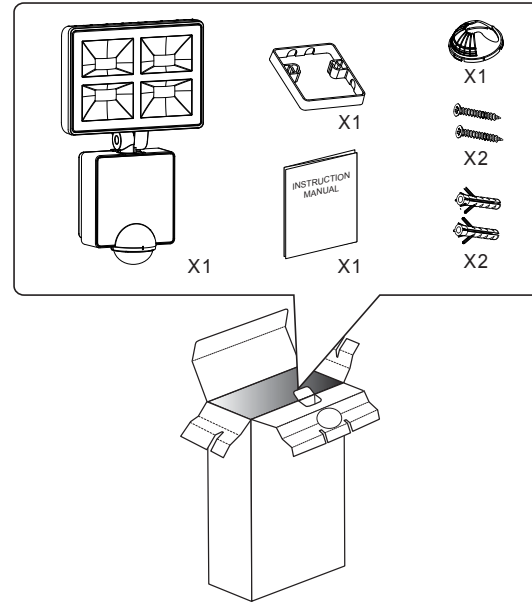
- Must only be installed by qualified electricians.
- Avoid the metal parts of the device due to potentially high temperature.
- The device conforms to EN60598 for designated installation; IP55 in accordance with EN 60529 and IEC62471 Photo biological safety of lamps and lamp system.
- Designed for use in normal environments
- Intended for outdoor installation.
- Energy saving.
- Long LED bulb life.

Index :

- | | |
|---------|---|
| Page 2 | Contents, Tools required. |
| Page 3 | Product dimensions. |
| Page 4 | Installation procedure. |
| Page 5 | Sensor detection range . |
| Page 6 | Walk test & adjustment, Detector head adjustment. |
| Page 7 | Knob settings. |
| Page 8 | Lens masking. |
| Page 9 | Lamp adjustment |
| Page 10 | High temperature in lamp. |

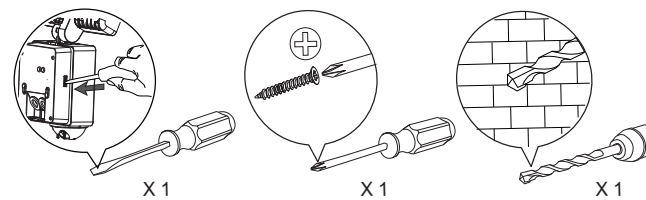
3. Contents:

What's in the box?

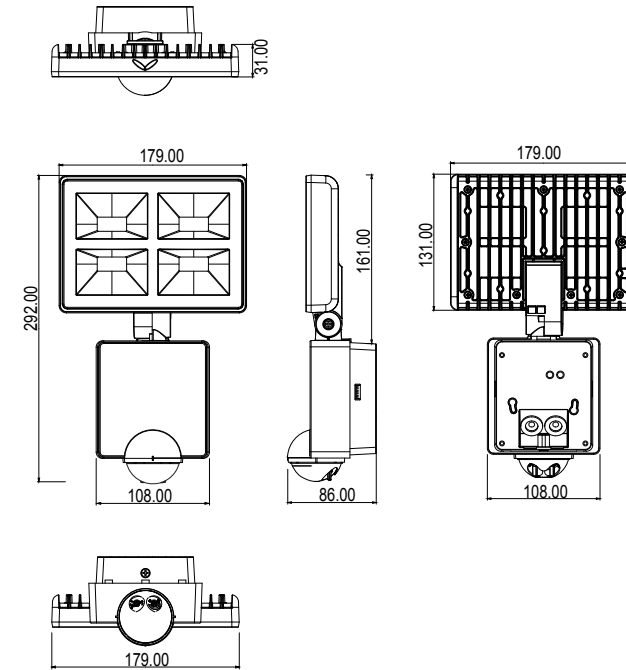


4. Tools required:

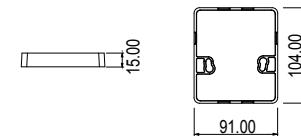
Tools / Equipment need for installation.



5. Product Dimensions:

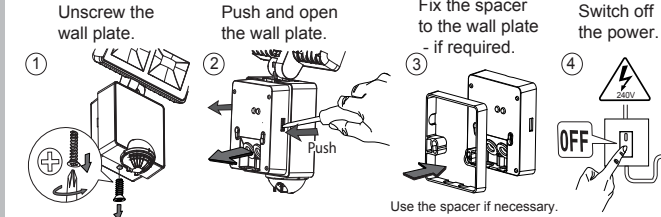


Spacer dimension:

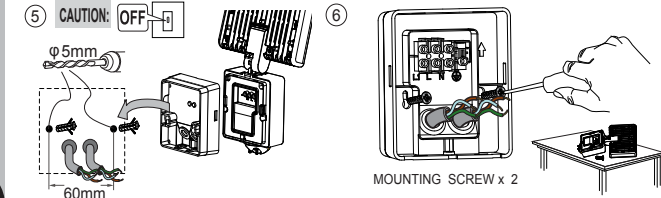


* The Spacer is an optional fitting which gives maximum Pan angle.

6. Installation Procedure:



Fix the spacer with the wall plate to the wall or the wall plate alone.

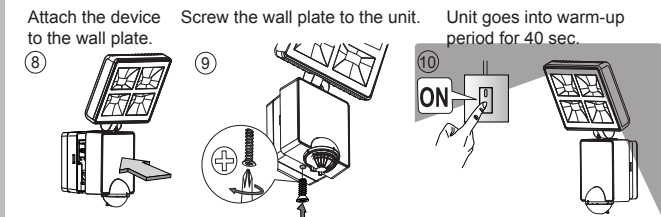


7. Connect the mains supply cable to the terminal block on the backplate as follows.

L	LIVE	BROWN
N	NEUTRAL	BLUE
⊕	EARTH	GREEN / YELLOW

L 1	SWITCH LIVE	BROWN
N	NEUTRAL	BLUE
⊕	EARTH	GREEN / YELLOW

For additional lighting, connect the external load to the terminal box on the back plate as shown.

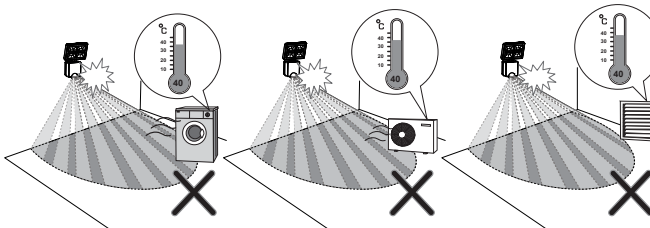


Installation Advise:

WARNING

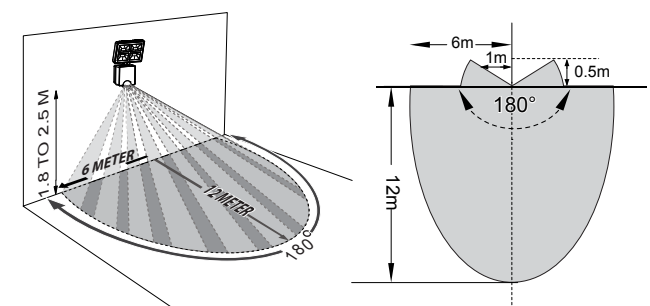
As the detector responds to changes in temperature, avoid the following situation:

- Pointing the detector towards objects with highly reflective surfaces, such as mirrors etc.
- Mounting the detector near heat sources, such as heating vents, air conditioning units, lights etc.
- Pointing the detector towards objects that may move in the wind, such as curtains, tall plants etc.



Detection Range:

LED400PIR: Recommended installation height is 2.5 meter above ground, the maximum detection range about 12 meter and at the angle of about 180 deg.



Walk Test and Adjustment

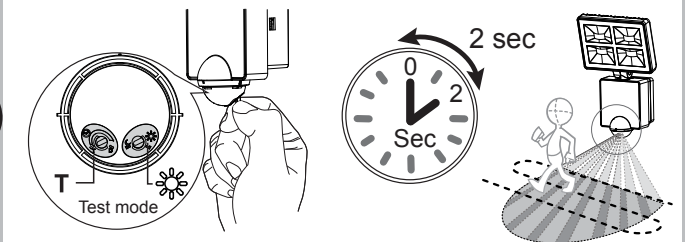
The purpose of Walk Test is used to test and adjust the detection coverage of LED400PIR under auto mode.

- Adjust the Time knob to “ T ”, then conduct a walk test as described in test procedure.

Test procedure:

- Adjust the Time knob to “ T ”, (Lux knob can be “Sun” or Moon”).
- Walk across the detection area, once the detector is triggered and the lamp will turn ON for 2 seconds.

Note walking direction when performing test.



Detector Head Adjustment

The detector head can be panned 90 deg. to the left and 90 deg. to the right.

* Do not use the adjuster knobs to turn the detector head.

