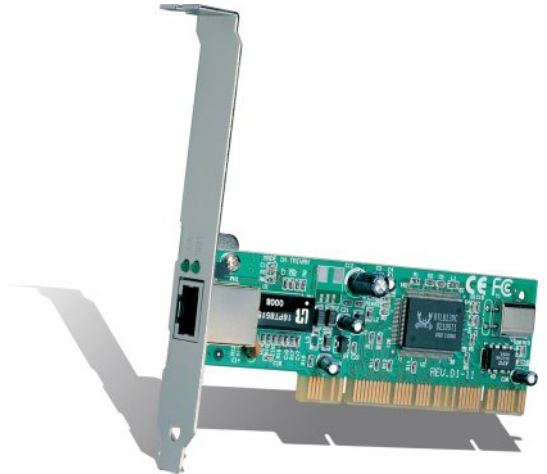


TE100-PCIWN **32-bit PCI 10/100Mbps N-way Fast Ethernet Card**

The TE100-PCIWN, a 10/100Mbps Fast Ethernet Plug-and-Play PCI adapter, utilizes the latest chipset technology and provides easy installation. It senses 10Mbps or 100Mbps (20Mbps or 200Mbps in full-duplex mode) automatically and connects to Ethernet/Fast Ethernet network with single RJ-45 connector. Supporting PCI v2.1 and 2.2 standards, it works with current and new PCI v2.2 standards with 3.3V bus voltage. With TRENDnet adapter, your desktop will turn into a high-bandwidth graphic and multimedia workstation or a power server running at full-duplex speed.



FEATURES

- Complies with IEEE 802.3, IEEE 802.3u, and IEEE 802.3x standards
- Plug-and-Play (PnP) for auto-configuration
- Supports WOL for PCI Ver. 2.2
- Supports 32-bit PCI bus master specification Rev 2.1/2.2
- Supports full-duplex mode that doubles the data rate up to 20Mbps/200Mbps
- Supports full-duplex flow control (IEEE 802.3x)
- Supports 10/100Mbps N-way auto-negotiation
- Easy-to-view LED indicators
- Built-in FIFO buffers reduces overhead of memory transfers
- Compatible with all popular operating systems
- Complies with PC99 standard
- 5 Year Warranty

BENEFITS

- **Performance:**
Operate in the 32-bit bus master mode, delivering throughputs as multi-megabits per second with little stress on the host's CPU.
- **Flexibility:**
Just plug it into your workstation and it's ready to go!
- **Migration:**
Half-/full-duplex auto-detect both 10Base-T and 100Base-TX modes. Make the adapters ideal for high-speed server when increased to 200Mbps network speed.
- **Cost-Effectiveness:**
Complying with PC99 standard and power saving mode, TRENDnet PCI PnP adapter is the perfect choice for cost-effective and high-bandwidth workstation networking.

TE100-PCIWN

32-bit PCI 10/100Mbps N-way Fast Ethernet Card

SPECIFICATIONS

Standards:

- IEEE 802.3 10Base-T, IEEE 802.3u 100Base-TX

Protocol:

- CSMA/CD

Network Media:

- Ethernet: UTP CAT 3, 4, 5 EIA/TIA-568 100-ohm screened twisted pair (STP).
- Fast Ethernet: UTP CAT 5, EIA/TIA-568 100-ohm screened twisted pair (STP).

Data Transfer Rate:

- 10/100Mbps (Half-duplex), 20/200Mbps (Full-duplex)

Network Drivers:

- Novell NetWare ODI, NDIS, SCO UNIX, LAN Manager, Windows 95/98/2000/NT, Windows for Workgroups, Packet Driver, LAN server, Warp server, Linux and many others

Diagnostic LEDs:

- Link, Activity

Temperature:

- Operating: 0° to 50° C (32° to 122° F)
- Storage: -20° to 80° C (-4° to 176° F)

Humidity:

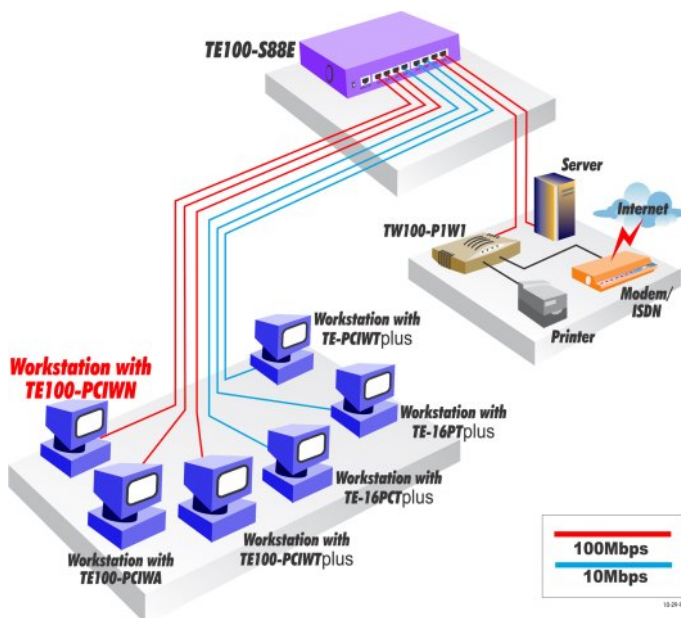
- 10 % to 90 % non-condensing

Certifications:

- FCC, CE, VCCI-II



NETWORKING SOLUTIONS



To Order Please Call:
1-888-326-6061

PRODUCT INFORMATION

- TE100-PCIWS: 32-bit PCI 10/100Mbps NWay Fast Ethernet Card
- TE100-PCIWN: 32-bit PCI 10/100Mbps N-way Fast Ethernet Card
- TE100-PCIWA: 32-bit PCI 10/100Mbps N-way Fast Ethernet Card with ACPI Wake-on-LAN
- TE-16PCTplus: 16-bit ISA PnP Ethernet Card with BNC + RJ-45 Connectors
- TE-16PTplus: 16-bit ISA PnP Ethernet Card with RJ-45 Connector
- TE-PCIWplus: 32-bit PCI PnP Ethernet Card with BNC + RJ-45 Connectors
- TE-PCIWTplus: 32-bit PCI PnP Ethernet Card with RJ-45 Connector

ORDERING INFORMATION

TRENDware International, Inc.
3135 Kashiwa Street
Torrance, CA. 90505. USA
Tel: 310-891-1100
Fax: 310-891-1111
Web: www.TRENDNET.com
Email: sales@trendware.com

TRENDnet
TRENDware, USA