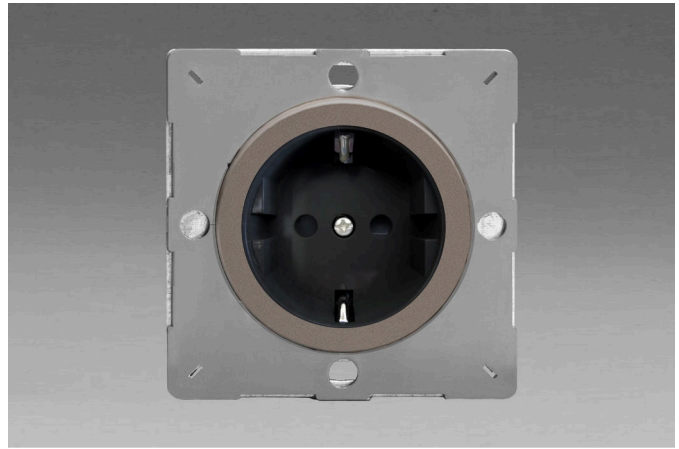




Data Sheet

Product Code: EG5FBR



Product Description: 1-Gang 16A Flush Socket with Schuko Earth

Range: European VariGrid

Finish: Pewter

Product Category: 16A Flush Socket

Insert/Knob Colour: Black Insert

Barcode: 5021575017595

Dimensions: 71x71x35mm

Net Weight: 46g

Gross Weight: 48g

Fixing Centres: 60.3mm

Depth from Mounting Face:

Recommended Back Box Depth: Standard European 40mm Round or Square

Operating Voltage: 230v 50Hz

Maximum Load Rating: 16A

Maximum Current Rating: 16A

Terminal (Live) Diameter: Push fit; **Capacity:** 2 terminals - 1 x 2.5mm² each

Terminal (Neutral) Diameter: Push fit; **Capacity:** 2 terminals - 1 x 2.5mm² each

Terminal (Earth) Diameter: Push fit; **Capacity:** 2 terminals - 1 x 2.5mm² each

Intended Applications: Indoor Use Only. Domestic electrical circuits.

Safety Advice: Only use solid cable with push fit terminals..

Applicable Safety Standard: PN-IEC60884-1 + IEC-60884-1

Commodity Code: 85366990

Declaration of Conformity

All information is subject to change without notice. Errors and omissions excepted. Images are for illustrative purposes only. Individual features and colours may vary. Refer to date of issue to identify latest version.

Date of Issue: 06th February 2022 © Doyle & Tratt Products Ltd, Carylls Lea, Faygate, West Sussex, RH12 4SJ, United Kingdom. All rights reserved.

Product Features

- ☑ CEE 7/3 sockets with symmetric AC connectors
- ☑ Earthing clips positioned to ensure that earth is engaged before live contact is made
- ☑ Can accept CEE 7/4, 7/7 and 7/17 plugs and Europlugs
- ☑ Suitable for use in VariGrid faceplates for your own combinations



10 YEAR GUARANTEE

BRITISH MADE 