



Data Sheet

Product Code: EGM2N

Product Description: 2-Gang 6A 1-Way Push-to-Make Momentary Switch

Range: European VariGrid

Finish: Satin

Product Category: Momentary Switch

Insert/Knob Colour: Chrome Buttons

Barcode: 5021575950885

Dimensions: 71x71x23mm

Net Weight: 56g

Gross Weight: 58g

Fixing Centres: 60.3mm

Depth from Mounting Face:

Recommended Back Box Depth: Standard European 40mm Round or Square

Operating Voltage: 230v 50Hz

Maximum Load Rating: 6A

Maximum Current Rating: 6A

Terminal (Live) Diameter: 3mm; **Capacity:** 3 x 1.5mm²

Terminal (Earth) Diameter: 3.3mm; **Capacity:** 3 x 1.5mm²

Intended Applications: Indoor Use Only. Domestic electrical circuits.

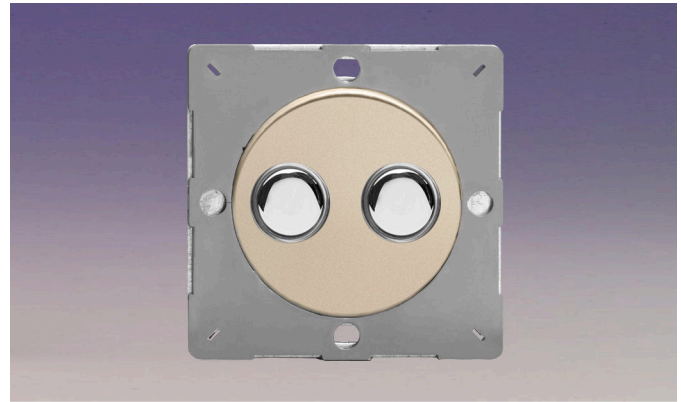
Applicable Safety Standard: BS EN 61058-1

Commodity Code: 85365011

Declaration of Conformity

All information is subject to change without notice. Errors and omissions excepted. Images are for illustrative purposes only. Individual features and colours may vary. Refer to date of issue to identify latest version.

Date of Issue: 06th February 2022 © Doyle & Tratt Products Ltd, Carylls Lea, Faygate, West Sussex, RH12 4SJ, United Kingdom. All rights reserved.



Product Features

- ⊙ Momentary push to make switch
- ⊙ For use with blinds, bells and applications where a momentary electric signal is required
- ⊙ Suitable for use in VariGrid faceplates for your own combinations



10 YEAR GUARANTEE

BRITISH MADE 