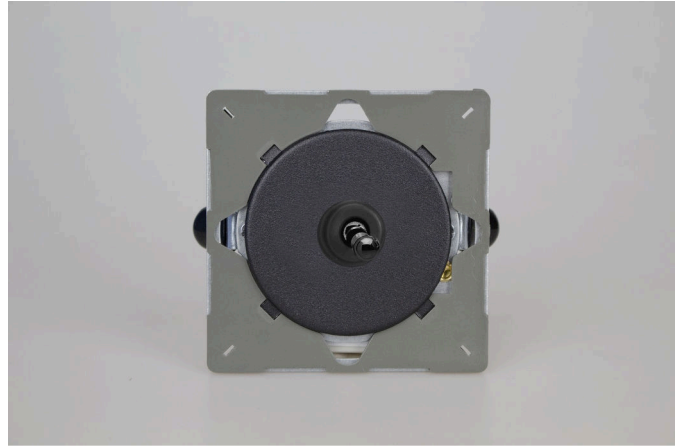




Data Sheet

Product Code: EGT1Y.MB



Product Description: 1-Gang 10A 1- or 2-Way Toggle Switch

Range: European VariGrid

Finish: Matt Black

Product Category: 2-Way Toggle Switch

Insert/Knob Colour: Iridium Toggle

Barcode: 5021575999587

Dimensions: 71x71x40mm

Net Weight: 66g

Gross Weight: 68g

Fixing Centres: 60.3mm

Depth from Mounting Face:

Recommended Back Box Depth: Standard European 40mm Round or Square

Operating Voltage: 230v 50Hz

Maximum Load Rating: 10A

Maximum Current Rating: 10A

Terminal (Live) Diameter: 3.3mm; **Capacity:** 3 x 1.5mm²

Terminal (Earth) Diameter: 3.3mm; **Capacity:** 3 x 1.5mm²

Intended Applications: Indoor Use Only. Domestic electrical circuits.

Applicable Safety Standard: BS EN 60669-1

Commodity Code: 85365007

Declaration of Conformity

All information is subject to change without notice. Errors and omissions excepted. Images are for illustrative purposes only. Individual features and colours may vary. Refer to date of issue to identify latest version.

Date of Issue: 06th February 2022 © Doyle & Tratt Products Ltd, Carylls Lea, Faygate, West Sussex, RH12 4SJ, United Kingdom. All rights reserved.

Product Features

- Ⓞ 1- or 2-way switching
- Ⓞ Suitable for controlling both mains and low voltage lighting
- Ⓞ Suitable for use in VariGrid faceplates for your own combinations



10 YEAR GUARANTEE

BRITISH MADE 