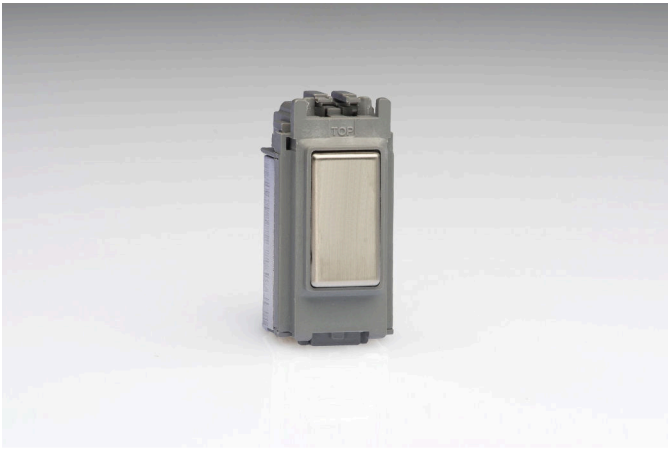




Data Sheet

Product Code: GJESS



Product Description: Tactile Touch Control Dimming Supplementary Controller for use with Master on 2-Way Circuits (1 Grid Space)

Range: PowerGrid Module

Finish: Steel

Product Category: V-Pro Multi-Point (formerly Eclique2) Dimmer

Insert/Knob Colour: Steel Insert

Barcode: 5021575969023

Dimensions: 54x26x23mm

Net Weight: 28g

Gross Weight: 30g

Fixing Centres: N/A

Depth from Mounting Face:

Recommended Back Box Depth: 35mm

Operating Voltage: 230v 50Hz

Maximum Load Rating: Refer to Master Dimmer

Maximum Current Rating: Refer to Master Dimmer

Terminal (Live) Diameter: 3.2mm; **Capacity:** 3 x 1.5mm²

Intended Applications: Indoor Use Only. Domestic lighting circuits including many dimmable LEDs.

Note: Some LED lamps are not designed for electronic dimmer switches and may remain illuminated even when a dimmer switch is turned off. This can be corrected using one Varilight LEDFix load regulator per circuit (part number YAGF-P).

Safety Advice: Not suitable for use with non-dimmable fluorescent bulbs and tubes, wire-wound or toroidal transformers, TRIAC dimmable loads or electric motors. Do not overload.

Applicable Safety Standard: BS EN 60669-2-1

Commodity Code: 85365005

Declaration of Conformity

All information is subject to change without notice. Errors and omissions excepted. Images are for illustrative purposes only. Individual features and colours may vary. Refer to date of issue to identify latest version.

Date of Issue: 06th February 2022 © Doyle & Tratt Products Ltd, Carylls Lea, Faygate, West Sussex, RH12 4SJ, United Kingdom. All rights reserved.

Product Features

- Ⓞ V-Pro intelligent dimming technology
- Ⓞ Soft start feature and intelligent overload protection
- Ⓞ Use with touch & remote master Multi-Point dimmers in multi-way circuits
- Ⓞ Create your own switch combinations



10 YEAR GUARANTEE

BRITISH MADE