



Data Sheet

Product Code: Z3PGRID3

Product Description: 3-Gang Twin Grid Frame (Yoke)

Range: PowerGrid

Product Category: Grid Frame (Yoke)

Barcode: 5021575960426

Dimensions: 60x129x14mm

Net Weight: 68g

Gross Weight: 70g

Fixing Centres: 120.6mm

Depth from Mounting Face:

Recommended Back Box Depth: Refer to Grid Modules

Operating Voltage: N/A

Maximum Load Rating: N/A

Maximum Current Rating: -

Terminal (Earth) Diameter: 5.4mm; **Capacity:** 4 x 2.5mm²

Intended Applications: Indoor Use Only. Domestic electrical circuits.

Safety Advice: Product Must Be Earthed.

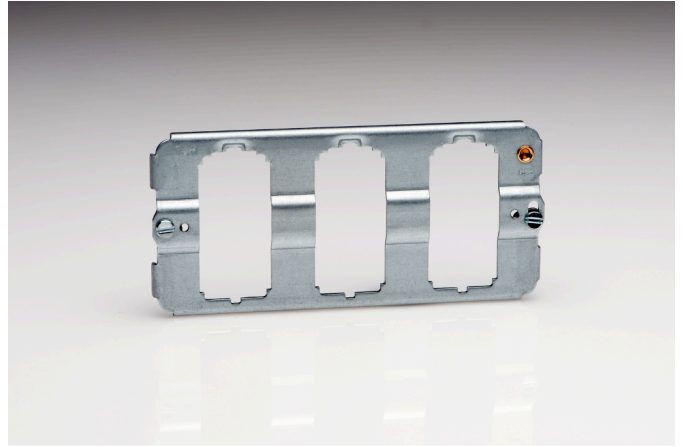
Applicable Safety Standard: N/A

Commodity Code: 85389091

Declaration of Conformity

All information is subject to change without notice. Errors and omissions excepted. Images are for illustrative purposes only. Individual features and colours may vary. Refer to date of issue to identify latest version.

Date of Issue: 06th February 2022 © Doyle & Tratt Products Ltd, Carylls Lea, Faygate, West Sussex, RH12 4SJ, United Kingdom. All rights reserved.



Product Features

- ⊗ For use with PowerGrid faceplates
- ⊗ Create your own switch combinations



MADE IN CHINA