



Data Sheet

Product Code: HFI3

This product can also be made using our Matrix System, using the products WF11 + MTP402 x 1

Product Description: 1-Gang 2-Way Push-On/Off Rotary Dimmer 1 x 60-400W

Range: Ultraflat

Finish: Iridium

Product Category: V-Dim Dimmer

Insert/Knob Colour: Iridium Knob

Barcode: 5021575390254

Dimensions: 89x89x47mm

Faceplate Depth: 1mm

Net Weight: 146g

Gross Weight: 148g

Fixing Centres: 60.3mm

Depth from Mounting Face: 24.6mm

Recommended Back Box Depth: 35mm

Operating Voltage: 230v 50Hz

Maximum Load Rating: Halogen; 400W

Maximum Current Rating: 1.7A

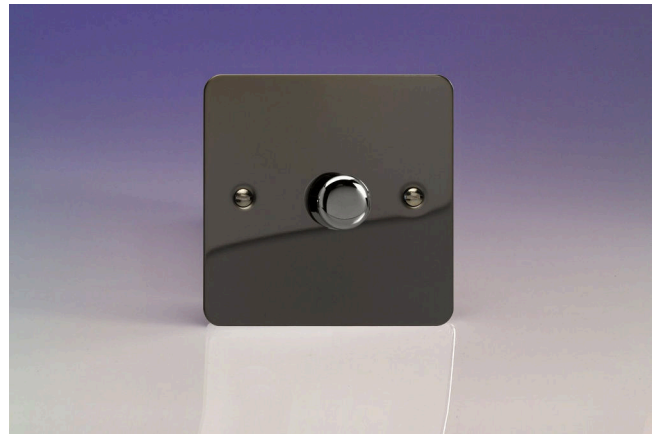
Terminal (Live) Diameter: 3.2mm; **Capacity:** 3 x 1.5mm²

Terminal (Earth) Diameter: 3.3mm; **Capacity:** 3 x 1.5mm²

Intended Applications: Indoor Use Only. Domestic lighting circuits.

Safety Advice: Not suitable for wire-wound low voltage transformers, fluorescent lighting, motors or fans. Do not overload. Product Must Be Earthed.

Applicable Safety Standard: BS 5518



Product Features

- ✔ V-Dim dimming technology
- ✔ Ideal for incandescent lighting including mains and low voltage halogen
- ✔ Contemporary, ultra-slim faceplate



10 YEAR GUARANTEE

BRITISH MADE



Commodity Code: 85365007

Declaration of Conformity

All information is subject to change without notice. Errors and omissions excepted. Images are for illustrative purposes only. Individual features and colours may vary. Refer to date of issue to identify latest version.

Date of Issue: 06th February 2022 © Doyle & Tratt Products Ltd, Carylls Lea, Faygate, West Sussex, RH12 4SJ, United Kingdom. All rights reserved.