



Data Sheet

Product Code: XDNBP1S

Product Description: 1-Gang 10A 1-Way Push-to-Make Retractive Momentary Switch

Range: Screwless

Finish: Satin

Product Category: Momentary Switch

Insert/Knob Colour: Chrome Button

Barcode: 5021575006841

Dimensions: 86x86x23mm

Faceplate Depth: 4mm

Net Weight: 116g

Gross Weight: 118g

Fixing Centres: 60.3mm

Depth from Mounting Face: 18.4mm

Recommended Back Box Depth: 25mm

Operating Voltage: 230v 50Hz

Maximum Load Rating: 10A

Maximum Current Rating: 10A

Terminal (Live) Diameter: 3mm; **Capacity:** 3 x 1.5mm²

Terminal (Earth) Diameter: 3.3mm; **Capacity:** 3 x 1.5mm²

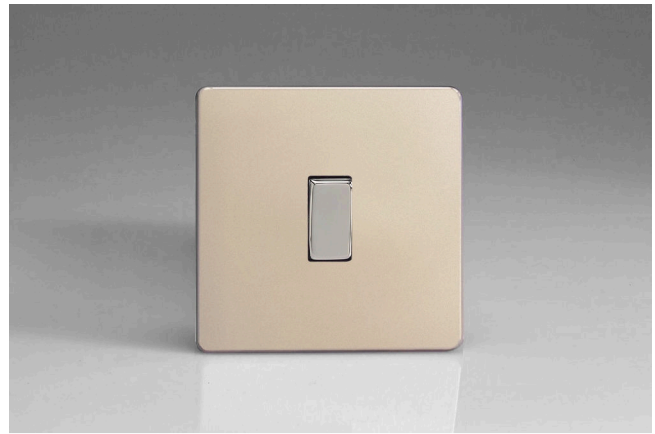
Intended Applications: Indoor Use Only. Domestic power supply.

Safety Advice: Product Must Be Earthed.

Applicable Safety Standard: BS EN 61058-1

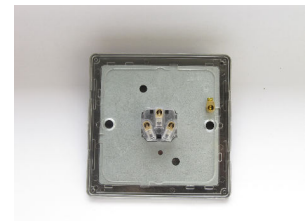
Commodity Code: 85365011

Declaration of Conformity



Product Features

- ☑ Momentary push to make rocker style switch
- ☑ For use with blinds, bells and applications where a momentary electric signal is required
- ☑ Sleek, low-profile screwless faceplate



10 YEAR GUARANTEE

BRITISH MADE



All information is subject to change without notice. Errors and omissions excepted. Images are for illustrative purposes only. Individual features and colours may vary. Refer to date of issue to identify latest version.

Date of Issue: 06th February 2022 © Doyle & Tratt Products Ltd, Carylls Lea, Faygate, West Sussex, RH12 4SJ, United Kingdom. All rights reserved.