



Data Sheet

Product Code: XDY45SS.BZ

Product Description: 45A Cooker Switch (Single Plate, Red Rocker)

Range: Screwless

Finish: Brushed Bronze

Product Category: Cooker Switch

Insert/Knob Colour: Red Insert

Barcode: 5021575193879

Dimensions: 86x86x35mm

Faceplate Depth: 4mm

Net Weight: 186g

Gross Weight: 188g

Fixing Centres: 60.3mm

Depth from Mounting Face: 24.9mm

Recommended Back Box Depth: 35mm

Operating Voltage: 230v 50Hz

Maximum Load Rating: Cooker Switch; 45A | Socket; 13A

Maximum Current Rating: 45A

Terminal (Live) Diameter: 6.4mm; **Capacity:** 2 x 10mm²

Terminal (Neutral) Diameter: 6.4mm; **Capacity:** 2 x 10mm²

Terminal (Earth) Diameter: 5.4mm; **Capacity:** 2 x 10mm²

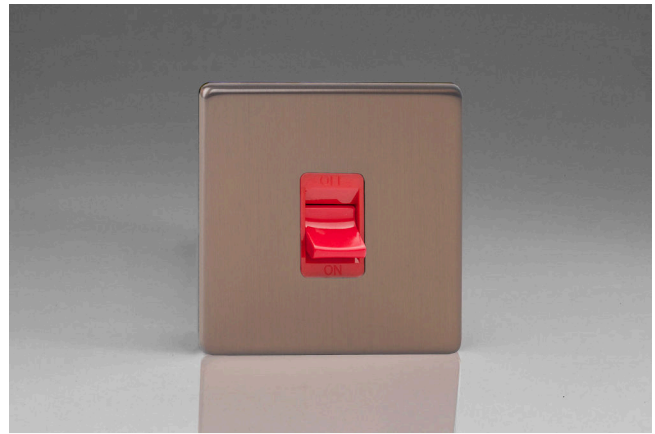
Intended Applications: Indoor Use Only. Domestic power supply.

Safety Advice: Product Must Be Earthed.

Applicable Safety Standard: BS EN 60669-1

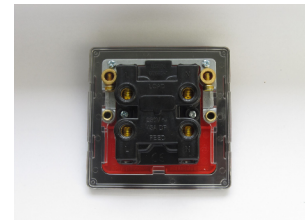
Commodity Code: 85389091

Declaration of Conformity



Product Features

- ✔ Double pole switching
- ✔ Single sized plate
- ✔ Sleek, low-profile screwless faceplate



10 YEAR GUARANTEE

BRITISH MADE



All information is subject to change without notice. Errors and omissions excepted. Images are for illustrative purposes only. Individual features and colours may vary. Refer to date of issue to identify latest version.

Date of Issue: 06th February 2022 © Doyle & Tratt Products Ltd, Carylls Lea, Faygate, West Sussex, RH12 4SJ, United Kingdom. All rights reserved.