



# Data Sheet

Product Code: XT6UD

**Product Description:** 13A Unswitched Fused Spur with Metal Inserts

**Range:** Classic

**Finish:** Brushed Steel

**Product Category:** Fused Spur

**Insert/Knob Colour:** Steel Inserts

**Barcode:** 5021575032468

**Dimensions:** 91x91x30mm

**Faceplate Depth:** 8mm

**Net Weight:** 156g

**Gross Weight:** 158g

**Fixing Centres:** 60.3mm

**Depth from Mounting Face:** 17.2mm

**Recommended Back Box Depth:** 25mm

**Operating Voltage:** 230v 50Hz

**Maximum Load Rating:** Refer to Fuse Value

**Maximum Current Rating:** 13A

**Terminal (Live) Diameter:** 4.5mm; **Capacity:** 4 x 2.5mm<sup>2</sup>

**Terminal (Earth) Diameter:** 3.3mm; **Capacity:** 3 x 1.5mm<sup>2</sup>

**Intended Applications:** Indoor Use Only. Domestic power supply.

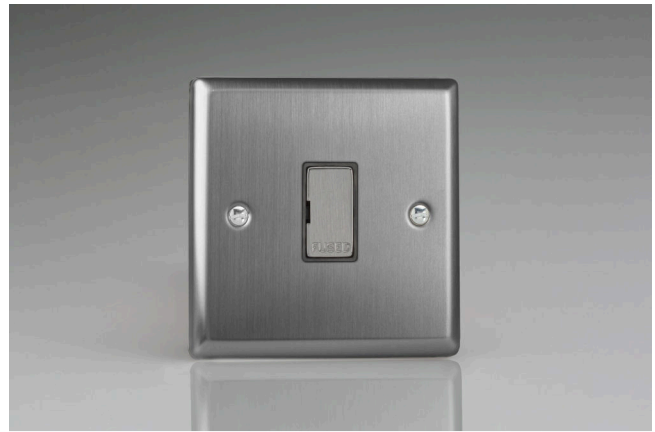
**Safety Advice:** Product Must Be Earthed.

**Applicable Safety Standard:** BS 1363-4

**Commodity Code:** 85389091

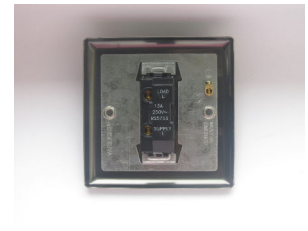
Declaration of Conformity

*All information is subject to change without notice. Errors and omissions excepted. Images are for illustrative purposes only. Individual features and colours may vary. Refer to date of issue to identify latest version.*



## Product Features

- ✔ Holds standard 25.4x6.4mm fuse
- ✔ Replaceable 13A fuse included
- ✔ Bevelled edge faceplate



10 YEAR GUARANTEE

BRITISH MADE



