



Data Sheet

Product Code: XT88S

Product Description: 2-Gang TV Socket, Co-axial + F-Type Satellite

Range: Classic

Finish: Brushed Steel

Product Category: TV Socket

Insert/Knob Colour: Plain Insert

Barcode: 5021575032635

Dimensions: 91x91x28mm

Faceplate Depth: 8mm

Net Weight: 126g

Gross Weight: 128g

Fixing Centres: 60.3mm

Depth from Mounting Face: 10.9mm

Recommended Back Box Depth: 16mm

Operating Voltage: N/A

Maximum Load Rating: N/A

Maximum Current Rating: -

Intended Applications: Indoor Use Only. Data circuits.

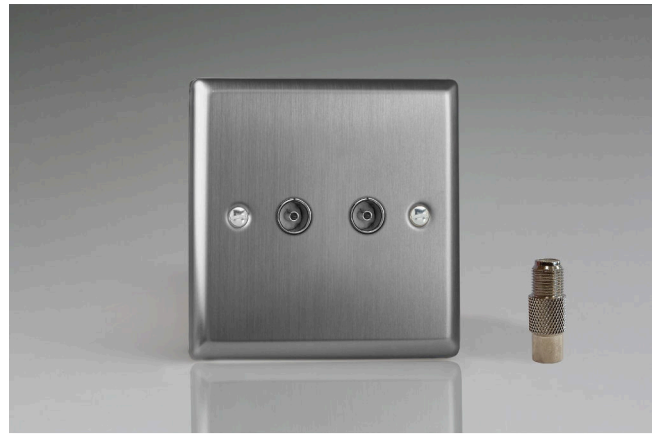
Applicable Safety Standard: BS 5733

Commodity Code: 85366910

Declaration of Conformity

All information is subject to change without notice. Errors and omissions excepted. Images are for illustrative purposes only. Individual features and colours may vary. Refer to date of issue to identify latest version.

Date of Issue: 06th February 2022 © Doyle & Tratt Products Ltd, Carylls Lea, Faygate, West Sussex, RH12 4SJ, United Kingdom. All rights reserved.



Product Features

- ⊕ Double TV socket - 1 x socket for use with male co-axial plugs and 1 x F-type satellite socket for use with male F-connection plugs
- ⊕ Bevelled edge faceplate



10 YEAR GUARANTEE

BRITISH MADE 