



Data Sheet

Product Code: XTPGY3

Product Description: 3-Gang PowerGrid Plate including Yoke (Twin Plate)

Range: Classic

Finish: Brushed Steel

Product Category: Grid Pack (Plate and Yoke)

Barcode: 5021575292725

Dimensions: 91x150x*mm

Faceplate Depth: 8mm

Net Weight: 209g

Gross Weight: 212g

Fixing Centres: 120.6mm

Depth from Mounting Face: Module Dependent

Recommended Back Box Depth: N/A

Operating Voltage: 230v 50Hz

Maximum Load Rating: N/A

Maximum Current Rating: -

Terminal (Earth) Diameter: 3.3mm; **Capacity:** 3 x 1.5mm²

Intended Applications: Indoor Use Only. Domestic lighting circuits.

Safety Advice: Product Must Be Earthed (via PowerGrid Frame).

Applicable Safety Standard: N/A

Commodity Code: 85389091

Declaration of Conformity

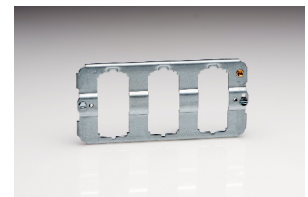
All information is subject to change without notice. Errors and omissions excepted. Images are for illustrative purposes only. Individual features and colours may vary. Refer to date of issue to identify latest version.

Date of Issue: 06th February 2022 © Doyle & Tratt Products Ltd, Carylls Lea, Faygate, West Sussex, RH12 4SJ, United Kingdom. All rights reserved.



Product Features

- ⊕ Create your own switch combinations
- ⊕ Bevelled edge faceplate
- ⊕ Comes in a pack with the grid frame pictured below.



10 YEAR GUARANTEE

BRITISH MADE



