



# Data Sheet

Product Code: XYPGY3.SL

**Product Description:** 3-Gang PowerGrid Plate including Yoke (Twin Plate)

**Range:** Vogue

**Finish:** Slate

**Product Category:** Grid Faceplate

**Insert/Knob Colour:**

**Barcode:** 5021575019452

**Dimensions:** 91x150x\*mm

**Faceplate Depth:** 8mm

**Net Weight:** 209g

**Gross Weight:** 212g

**Fixing Centres:** 120.6mm

**Depth from Mounting Face:** Module Dependent

**Recommended Back Box Depth:** N/A

**Operating Voltage:** 230v 50Hz

**Maximum Load Rating:** N/A

**Maximum Current Rating:** -

**Terminal (Earth) Diameter:** 3.3mm; **Capacity:** 3 x 1.5mm<sup>2</sup>

**Intended Applications:** Indoor Use Only. Domestic lighting circuits.

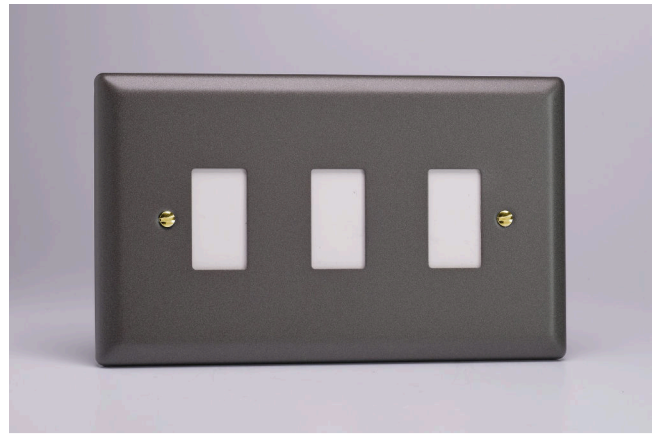
**Safety Advice:** Product Must Be Earthed (via PowerGrid Frame).

**Applicable Safety Standard:** N/A

**Commodity Code:** 85389091

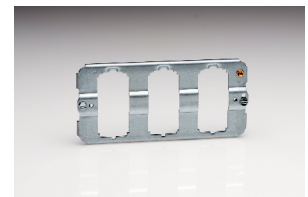
Declaration of Conformity

*All information is subject to change without notice. Errors and omissions excepted. Images are for illustrative purposes only. Individual features and colours may vary. Refer to date of issue to identify latest version.*



## Product Features

- ⊕ Create your own switch combinations
- ⊕ Bevelled edge faceplate
- ⊕ Comes in a pack with the grid frame pictured below.



10 YEAR GUARANTEE

BRITISH MADE



