

WX6 fan

WX6T with timer

*Installation and
maintenance instructions*

Retain for future reference

GB

F

D

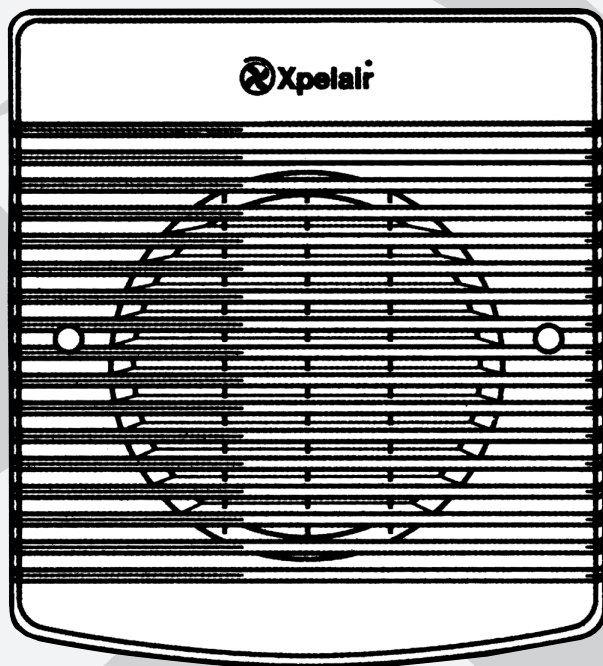
NL

I

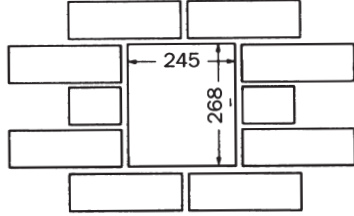
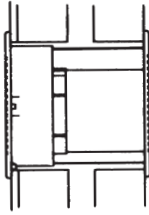
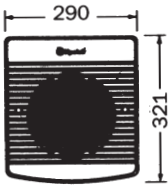
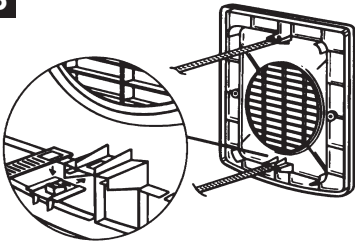
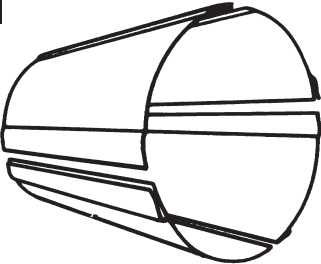
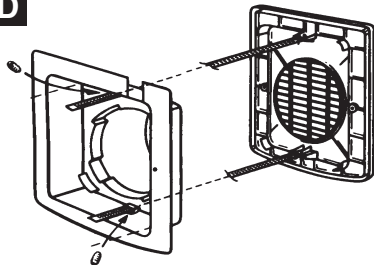
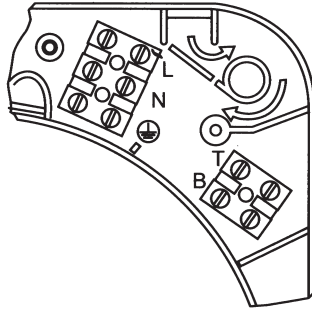
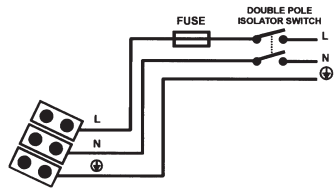
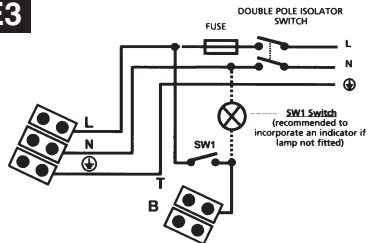
NO

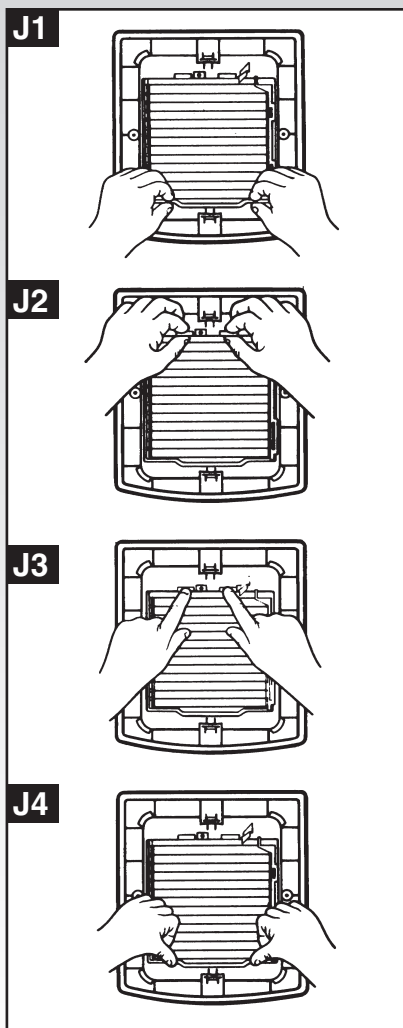
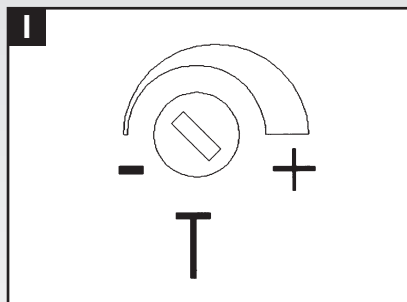
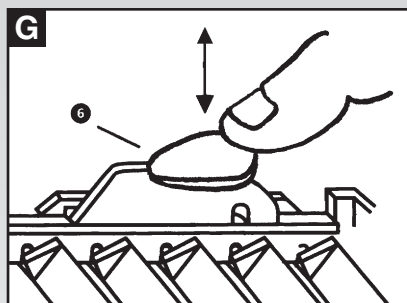
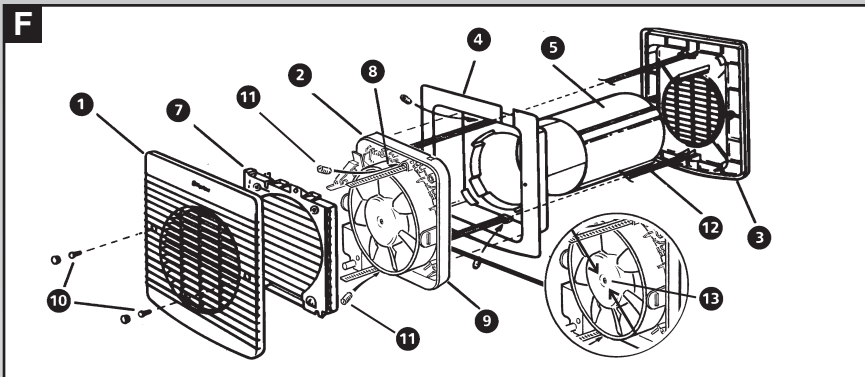
GR

a



 **Xpelair**[®]

A**B****C****D****E1****E2****E3**



Xpelair WX6/WX6T installation and operating instructions

Please leave this leaflet with the fan for the benefit of the user

Installing the Fan

These appliances are intended for connection to fixed wiring.

Check that the electrical rating shown on the fan matches the mains supply **F9**.

WARNING: THESE APPLIANCES MUST BE EARTHED.

All installations must be supervised by a qualified electrician.

Installations and wiring must conform to current IEE Regulations (UK), local or appropriate regulations (other countries).

If you have any queries before installing these products or after they have been installed, call the Xpelair Technical Hotline +44 (0) 8709 000430. Our engineers are there to help you during normal office hours (UK only) and may be faxed at all other times +44 (0) 8709 000530.

Customers outside the UK please contact your local Xpelair distributor.

Description

The WX6 models have the following features:

- ◆ Wall/Panel mounting options.
- ◆ Single speed extract operation.

WX6

- ◆ For remote switch operation.
- ◆ Trickle Ventillation Setting.

WX6T

- ◆ For remote switch operation.
- ◆ Integral timer facility.
- ◆ Trickle Ventillation Setting.

What the installer will need

- ◆ A double pole isolating switch with a minimum contact gap of 3mm (Wall or Ceiling mounted).
- ◆ If metal switch boxes are used, earthing regulations must be followed.
- ◆ Suitably rated 4 core cable (see 'Installing switches and cables' section).
- ◆ 6mm blade large screwdriver, 3mm blade electricians screwdriver and No. 1 & 2 Pozidriv screwdrivers.
- ◆ Masonry drill, hammer & chisel.
- ◆ Extendible wall tube, WK6 for walls deeper than 11"/290mm. Available in 300mm or 450mm length.

Where to locate the fan

- ◆ Locate it as high as possible.
 - ◆ At least 200mm from the edge of the wall to the centre of the hole.
 - ◆ As far away as possible from and opposite to the main source of air replacement to ensure airflow across the room (e.g. opposite the internal doorway).
 - ◆ Near the source of steam or odours.
 - ◆ **Not where ambient temperatures are likely to exceed 50°C.**
 - ◆ **If installed in a kitchen, fans must not be mounted immediately above a cooker hob or eye level grill.**
 - ◆ **If installing in a room containing a fuel burning device which has a non-balanced flue, it is the installers responsibility to ensure that there is enough replacement air to prevent fumes being drawn down the flue when the fan is operating up to maximum extract.**
- Refer to Building Regulations for specific requirements.
- Exhaust air must not be discharged into a flue used for exhausting fumes from appliances supplied with energy other than electric.**

Requirements of all authorities concerned must be observed for exhaust air discharge and intake flow rates.

- ◆ **When intended for use in possible chemical corrosive atmospheres, consult our Technical Service Department.**
(For overseas market contact your local Xpelair distributor).
- ◆ **This electrical product, if installed in a shower room or bathroom must be situated so that it cannot be touched by persons making use of the bath or shower.**

Installing the switches and cables

- 1 Check there are no buried pipes or cables e.g. electricity, gas, water behind the switch location (In wall or above the ceiling).
- 2 Lay in the cable from the isolating switch to the fan location via the on/off switch if required.
- 3 Lay in the cable from the isolating switch to the point of connection to the mains supply.
WARNING: DO NOT MAKE ANY CONNECTIONS TO THE ELECTRICAL SUPPLY AT THIS STAGE.
- 4 Install the isolating switch and the on/off switch if required.
- 5 Make all connections within the isolating switch and the on/off switch if required.
Note: Switches must be so situated that they cannot be touched by persons making use of the bath or shower.

For Australia only

These models are permanently connected to the supply and operation is controlled by a remote switch. They should be directly wired to the supply through an approved 10A wall mounted surface switch with at least 3mm clearance between contacts.

Preparing the hole

If working above ground floor level, appropriate safety precautions must be observed.

WARNING: EYE PROTECTION MUST BE WORN DURING ALL DRILLING AND CHISELLING OPERATIONS.

For installing in a wall

- 1 Check there are no buried pipes or cables in the wall or obstructions on the outside e.g. electricity, gas, water.
- 2 Make sure that the centre of the hole is located at least 200mm from the edge of the wall.
- 3 Mark the outline of the hole on the wall (for hole dimensions see **A**).
- 4 Drill pilot holes around edge of the cutting line.
- 5 Cut through the plaster using a hammer and chisel.
- 6 Cut through the inner wall using a cold chisel or brick bolster. Do not cut right through.
- 7 Go outside and cut a hole in the outer wall ensuring alignment.

Separating the inner grille and fan from mounting box

- 1 Remove the inner grille assembly by removing the two screws **F10** securing the inner grille assembly to the fan mounting box.
- 2 Remove the two screws **F11** securing the fan assembly to the fan mounting box.

Mounting the fan mounting box and outer grille **D**

If working above ground floor level, appropriate safety precautions must be observed.

- 1 Insert two colour matching screw covers in the fixing holes in the outer grille, the fixing holes

- are not used on the outer grille.
- Secure the two ladder strips to the outer grille by positioning them over the hook mouldings and snapping these into position **B**.
 - Hold the outer grille up to the outside of the wall ensuring the ladder strips protrude to the interior.
 - Offer up the fan mounting box to the inner wall face and locate ladder strips into their location fixings.
 - Pull ladder strips through, locate wall box in wall and screw worm screws into position. **Do not overtighten the screws.** Cut away any excess ladder strip remaining. (If necessary apply a sealing mastic to the flanges of the fan mounting box and the outer grille. This will provide additional seals and take out any unevenness on both faces).
 - Assemble wall tube by slotting the four sections together **C**.
 - Push the wall tube through the hole in the fan mounting box and locate on the outer grille.
 - The cavity wall tube must be cut flush with the inner face of the fan mounting box. Mark off and cut away and excess wall tube and re-install. When installed, the wall box must slope slightly downwards towards the outer grille.
 - Position and secure the fan duct assembly into the fan mounting box, using the fixing screws **F** **10**. **Do not overtighten the screws.**

Wire the electrical connections

- Wire the switch cable into the fan's terminal connector as shown in diagram **E2** for WX6 or **E3** for WX6T).
 - If the Fan is wired from above, remove the fan's Terminal cover and feed the cable through the top cable entry. Ensure the outer sheath of the cable is retained in the labyrinth **E1**.
 - If wiring from the rear, remove the fan's terminal cover and rear entry knockout, feed the cable through the knockout.
 - Refit and secure the terminal cover.
 - Refit the inner grille to the fan mounting box, using fixing screws **F** **10**. **Do not overtighten screws.**
 - Insert two colour matching screw covers in the fixing holes in the inner grille. When removing the covers, place a 3mm blade electrician's screwdriver into the slot and lever off the cover.
 - Switch off the mains electrical supply and remove fuses.**
 - Connect the cable from isolation switch to the electrical supply wiring.
 - Replace the fuses, and switch on the mains electrical supply.
- ◆ **For fixed wiring circuits the protective fuse for the appliance must not exceed 5A.**

Operating the fan

- ◆ These fans are single speed and non reversible (extract only).
- ◆ The shutters have a time delay of up to 1 minute on opening, and up to 3 minutes on closing. Activated by operation of the switch, the delay ensures quiet operation.

For Australia Only:

WARNING - Children should not play with the appliance. Young children and the infirm should be supervised.

WX6

- ◆ The fan is operated by a remote switch.

WX6T

- ◆ The fan is operated by a remote switch.
- ◆ The integral timer provides an adjustable over-run period after the fan has been switched off.

Adjusting the timer overrun

- ◆ **Before making any adjustments, isolate the fan completely from the mains supply.**

- ◆ The overrun timer is factory preset at approximately 20 minutes. The time is adjustable between approximately 2 minutes to 20 minutes.

To adjust the timer setting

- Remove the inner grille assembly (see 'Separating the inner grille from the mounting box' section).
- Turn the adjuster marked 'T' anti-clockwise to reduce the timer overrun **I**.
- Turn the adjuster clockwise to increase the timer overrun.
- Replace the inner grille assembly and return power.

Trickle ventilation

Trickle ventilation is equivalent to that provided by an air block or similar device.

- Remove the grille/back draught shutter (see 'Mounting the fan in the hole' section).

To allow trickle ventilation

- HOLD THE SHUTTER VANES FULLY OPEN.
- Push down firmly on the trickle vent catch until it clicks into position then release the shutter vanes. (See Fig.G).

To fully close the shutters and stop any back draught

- Pull the trickle vent catch towards you until it clicks into position.
- Refit the grille/back draught shutter, ensuring that the actuator lever is in the "fully down" position.

Maintenance

NOTE: A QUALIFIED ELECTRICIAN MUST CARRY OUT ALL CLEANING.

- Before cleaning, isolate the fan completely from the mains supply. Allow 3 minutes for the impeller to stop and the powered shutter to close.**
- Remove the inner grille by removing the two screw covers and the screws securing the inner grille assembly to the fan mounting box **F** **10**. To remove the backdraught shutter lay the inner grille face down and pull shutter assembly upwards **I1** and **I2**.
- To remove the impeller unscrew the central screw and remove it together with the washer. Place screw and washer to one side **R13**.
- Clean the back draught shutter/grille and impeller by immersing in warm soapy water. Dry thoroughly.
- Do not immerse the fan in water or other liquids to clean any other parts of the fan.**
- Thoroughly dry the impeller and refit. Replace the screw and washer ensuring that they are securely fitted.
- Refit the back draught shutter **I3** and **I2**.
- Refit the inner grille assembly and secure with the two fixing screws. **Do not overtighten the screws.**
- Refit the screw covers.

NOTE: THE FAN WILL CONTINUE TO OPERATE WITH THE INNER GRILLE ASSEMBLY REMOVED, HENCE IT MUST BE ISOLATED COMPLETELY FROM THE MAINS BEFORE ANY WORK IS CARRIED OUT.

- ◆ **Never use strong solvents to clean the fan.**
- ◆ **Apart from cleaning, no other maintenance is required.**

Components

- | | |
|------------------------|-----------------------------|
| 1 Inner grille | 8 Terminal cover |
| 2 Fan assembly | 9 Rating plate |
| 3 Outer grille | 10 Screws (M4 x 10mm long) |
| 4 Fan mounting box | 11 Screws (M4 x 20 mm long) |
| 5 Wall tube | 12 Ladder strips |
| 6 Trickle vent catch | 13 Impeller screw |
| 7 Back draught shutter | |

Do's and don'ts

- Do read all the instruction leaflet before commencing installation.
- Do install the controller with a double pole isolating switch.
- Do make sure the mains electricity supply is switched off before attempting to make electrical connections or carry out any maintenance or cleaning
- Don't wire more than one fan into each controller.

Guarantee

Customers outside UK - see international below.

- UK: The fan is guaranteed against defects for three years from the date of purchase.
- Please keep your purchase receipt.
- If you have any problems, contact Xpelair's Head Office at the address shown below.

Technical advice and service

Customers outside UK - see international below.

UK: Xpelair have a comprehensive range of services including:

- Free technical help-desk for Engineers on all aspects of ventilation.
- Free design service, quotations and site surveys.
- Service and maintenance contracts to suit all requirements.

Please ask for details:

- By telephone on Techline: **+44 (0) 8709 000430**
- By fax on on Techfax: **+44 (0) 8709 000530**
- At the address below.

Head Office

GDA Applied Energy Ltd, Morley Way, Peterborough, PE2 9JJ, England

Telephone: **+44 (0) 1733 456789**

Fax: **+44 (0) 1733 310606**

Sales Hotline: **+44 (0) 8709 000420**

<http://www.xpelair.co.uk>

For all your spares requirements (UK only) –

GDA Ltd, Parts Dept, Morley Way, Peterborough, PE2 9JB, England

Telephone: **+44 (0) 8709 077077**

Fax: **+44 (0) 8709 076076**

International

- Guarantee: Contact your local distributor or Xpelair direct for details.
- Technical Advice & Service: Contact Your local Xpelair distributor.
- **Export Sales & Administration**



FM 02118
QAS 3284/37



21832AA Revision B