



Zip sets new standards in Customer Care with the largest team of directly employed engineers in its sector, providing comprehensive on-site maintenance, repair and installation packages.

**Zip Heaters (UK) Ltd**  
 Bertie Ward Way, Dereham, Norfolk, NR19 1TE  
 General switchboard Tel: 0870 608 8888  
 sales@zipheaters.co.uk  
 www.zipheaters.co.uk

#### Zip Worldwide

**Europe**  
 Clage GmbH  
 Phone +49 4131 89010  
 www.clage.de

**Africa**  
 Franke SA (Pty) Ltd  
 Phone +27 31 469 3036  
 www.franke.co.za

**Asia Pacific**  
 Hang Tat Heating  
 Phone +852 2363 2334  
 www.berlin1967.com

**Australia**  
 Zip Heaters (Aust) Pty Ltd  
 Phone +61 2 9796 3100  
 www.zipindustries.com

**New Zealand**  
 Zenith Heaters Ltd  
 Phone +64 9 838 8612  
 www.zenithheaters.com

The terms 'Zip', 'Power-Pulse', 'Hydroboil', 'Hydroboil Plus', 'Econoboil' and 'HydroTap' are registered trade marks of Zip Industries.

© Zip Heaters (UK) Ltd, 311008 April 2009

**Zip**  
 Instant Boiling Water



**Zip**  
 Instant Boiling Water



**New Zip Hydroboil Plus<sup>®</sup>**  
 Cuts energy consumption dramatically



Zip systems are in daily use in tens of thousands of locations in London and across the UK.



## No waiting for water to boil with Zip instant boiling water

### **Saves time**

No more time wasted waiting for water to boil – Zip gives boiling water instantly, at the touch of a tap.

### **Saves energy**

No energy wasted boiling more water than needed – fingertip control brings you a cup-full or teapot-full at a time.

### **Saves space**

No cluttered worktops – Zip instant boiling water eliminates the need for kettles and exposed power leads.

### **Saves money**

Costs little to run – thanks to energy-efficient design and electronic controls to minimise power consumption.

### **Sets a new standard**

Every working day in the UK over seven million cups of tea or coffee are made using Zip instant boiling water systems.



Newbury: The Berkshire HQ of Vodafone features Zip instant boiling water systems



30 St Mary Axe: This iconic London building is equipped with Zip instant boiling water



City Hall: Home of the Greater London Authority and user of Zip instant boiling water systems



Bristol Royal Infirmary: Zip instant boiling water systems are used in this prestigious facility and at other NHS locations throughout the UK



## New electronic Zip Hydroboil Plus: six models to choose from

- Choice of three capacities
- Choice of two case finishes
- All with two year on-site parts and labour warranty

**Zip Hydroboil Plus 3.0 Litre in white steel or stainless steel**



Zip Hydroboil Plus 3.0 Litre gives up to 18 cups at one time with a recovery rate of up to 100 cups per hour. Ample capacity for smaller offices, shops and factories.

White steel case order code HP003  
Stainless steel case order code HP103

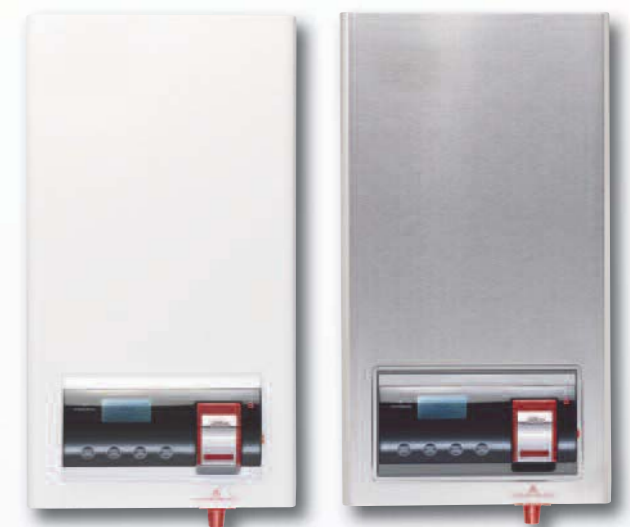
**Zip Hydroboil Plus 5.0 Litre in white steel or stainless steel**



Zip Hydroboil Plus 5.0 Litre gives up to 30 cups at one time with a recovery rate of up to 140 cups per hour. Most popular size for office, shop and factory kitchens.

White steel case order code HP005  
Stainless steel case order code HP105

**Zip Hydroboil Plus 7.5 Litre in white steel or stainless steel**



Zip Hydroboil Plus 7.5 Litre gives up to 45 cups at one time with a recovery rate of up to 140 cups per hour. Bigger capacity for busy kitchens, canteens and restaurants.

White steel case order code HP007  
Stainless steel case order code HP107



New electronic Zip Hydroboil Plus:  
offers a host of new safety features



1. Cool touch tap lever with separate spout for reduced heat loss and added safety.



2. Fingertip control for safe cup filling. Allows users to start and stop the flow of boiling water with greater accuracy.



3. Lift to lock flow 'on' for safe hands-free filling of teapots and cafetiers.



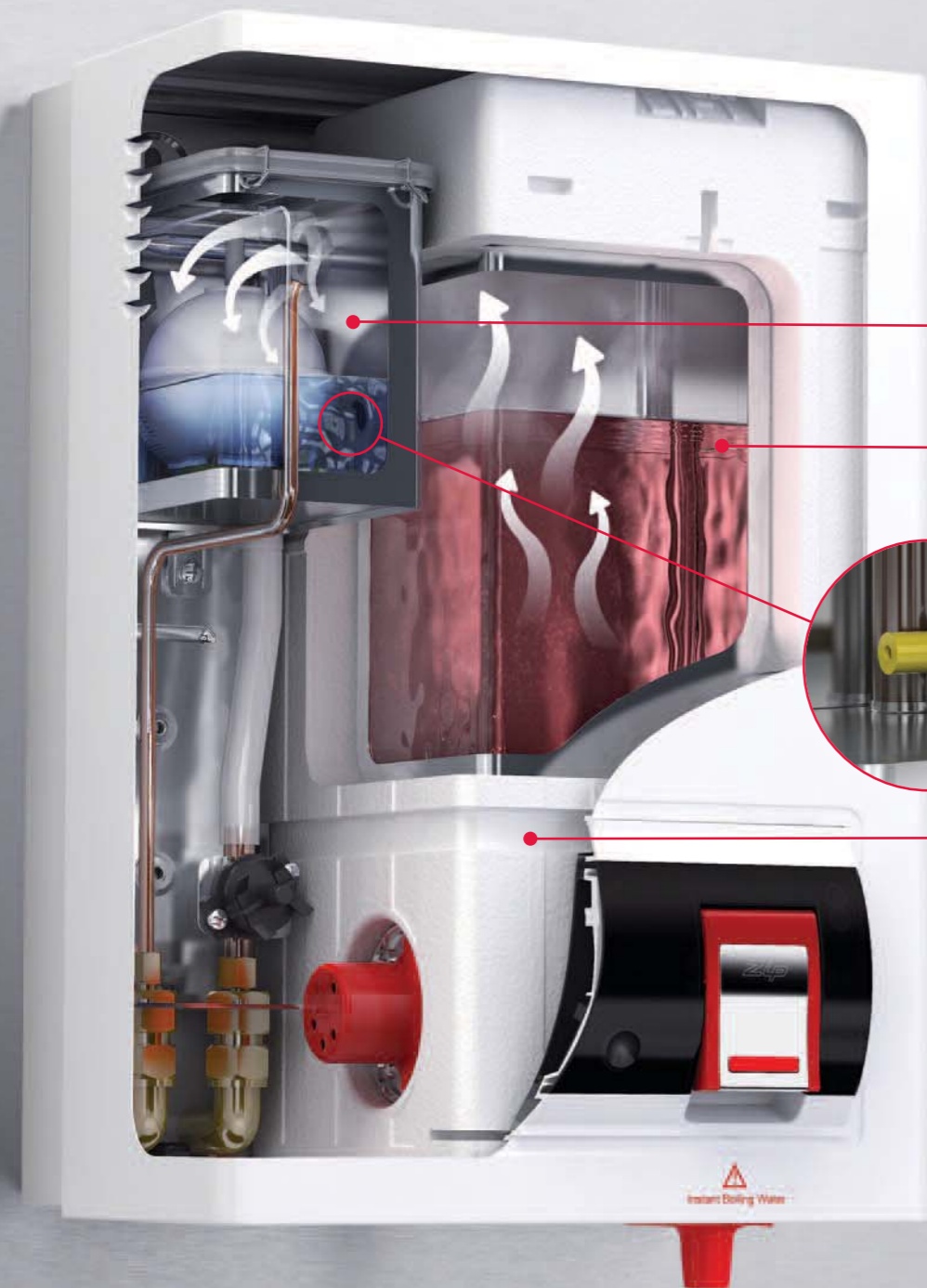
4. Where needed, a safety lock prevents accidental use, with combined finger and thumb operation required to dispense.



5. Simple touch pad programming allows authorised users to preset energy saving functions and storage temperature from 65°C to 100°C.



6. Spout positioned below unit for safe visible draw-off.



**Patented twin chamber technology.**

Stores incoming cold water separately from boiling water.

**Patented Steam-Heat-Boost system.**

Recycles energy from steam to pre-heat incoming cold water.

**Patented Teflon™ metering tube.**

Regulates water inflow so boiling water is maintained at set temperature.

**Moulded high temperature insulation.**

Superior heat retention performance minimises boiling water heat loss.

## New electronic Zip Hydroboil Plus: cuts energy consumption 5 ways



### 1. Steam-Heat-Boost System

Steam from stored boiling water is recycled within all Zip Hydroboil products to pre-heat incoming cold water. A patented metering tube accurately controls the flow of pre-heated water into the boiling chamber, to maintain stored water within 1°C of the set temperature.



### 2. Power-Pulse™ energy-saving technology

New Power-Pulse energy-saving technology reduces power consumption dramatically. Power-Pulse applies full power to heat boiling water only during heavy-usage periods. Power-Pulse cuts back to micro-pulse power during light usage periods, or when unused. Power-Pulse also maintains boiling water temperature more precisely than ever before. Power-Pulse is the latest in electronic control technology, and is exclusive to Zip world wide.



### 3. Inactivity sleep mode

Following a period of 2 or 4 hours non-use Hydroboil Plus automatically enters sleep mode when the unit powers down allowing the water temperature to gradually reduce to 65°C, at which it is maintained. Upon further draw off boiling resumes.



### 4. Low light sleep mode

An integral light detector automatically activates sleep mode (as above) when room lights are switched off, returning to normal operation when the next draw off occurs or the lighting is switched back on. This energy saving instant boiling water feature is a world first for Zip.



### 5. Integral 24 hour 7 day timer

Switches system off automatically during known periods of inactivity e.g. overnight or at weekends, returning to full functionality ahead of the next expected demand.



New fascia available late 2009 on capacities up to 5 litres



Red lever and spout available mid 2009

### Zip Econoboil

Thermostatically controlled instant boiling water system.

Capacities 3.0 and 5.0 litre.  
Cups at a time 18 or 30.  
Recovery rate 100 cups/hr (3.0 litre).  
Recovery rate 140 cups/hr (5.0 litre).

Simple to use, with two-way safety tap.  
Fingertip control for filling cups.  
Tap locks ON to fill pots hands-free.

Twin chamber boiling technology.  
Original copper boiling chamber.  
Chrome plated brass tap.  
White case.

One year warranty.

On-site parts and labour.

### Zip Hydroboil

Thermostatically controlled instant boiling water system.

Capacities 1.5, 3.0, 5.0, 7.5, 10.0, 15.0, 25.0 and 40 litre.  
Cups at a time 9, 18, 30, 45, 60, 90, 150 or 240.  
Recovery rate 100 cups/hr (1.5 & 3.0 litre).  
Recovery rate 140 cups/hr (5.0 & 7.5 litre).  
Recovery rate 180 cups/hr (10.0, 15.0 & 25.0 litre).  
Recovery rate 360 cups/hr (40.0 litre).

Simple to use, with two-way safety tap.  
Fingertip control for filling cups.  
Tap locks ON to fill pots hands-free.

Twin chamber boiling technology.  
Stainless steel boiling chamber.  
Premium insulation.  
Simple-to-service tank with removable access ports top and bottom.  
Power on indicator.  
Chrome plated brass tap.  
White or stainless steel case.

Two year warranty.

On-site parts and labour.

### New Electronic Zip Hydroboil Plus

Electronically controlled instant boiling water system.

Capacities 3.0 and 5.0 and 7.5 litre.  
Cups at a time 18, 30 or 45.  
Recovery rate 100 cups/hr (3.0 litre).  
Recovery rate 140 cups/hr (5.0 & 7.5 litre).

New cool touch two-way safety tap.  
Fingertip control for filling cups.  
Tap locks ON to fill pots hands free.  
Safety lock with combined finger and thumb operation, where needed.  
Lock indicator on display panel.  
Variable boiling temperature control.  
Temperature factory set to 98°C.  
Touch-panel function setting.

Twin chamber boiling technology.  
Stainless steel boiling chamber.  
Simple to service tank with removable access ports top and bottom.  
New energy saving Power-Pulse™.  
Sleep mode when idle 2 or 4 hours.  
Sleep mode when lights go out.  
Integral 24hr 7 day timer.  
Filter change indicator (where needed).  
White or stainless steel case.

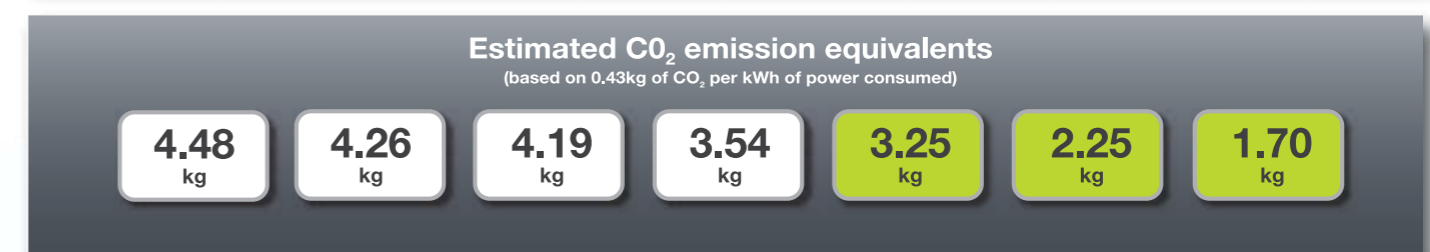
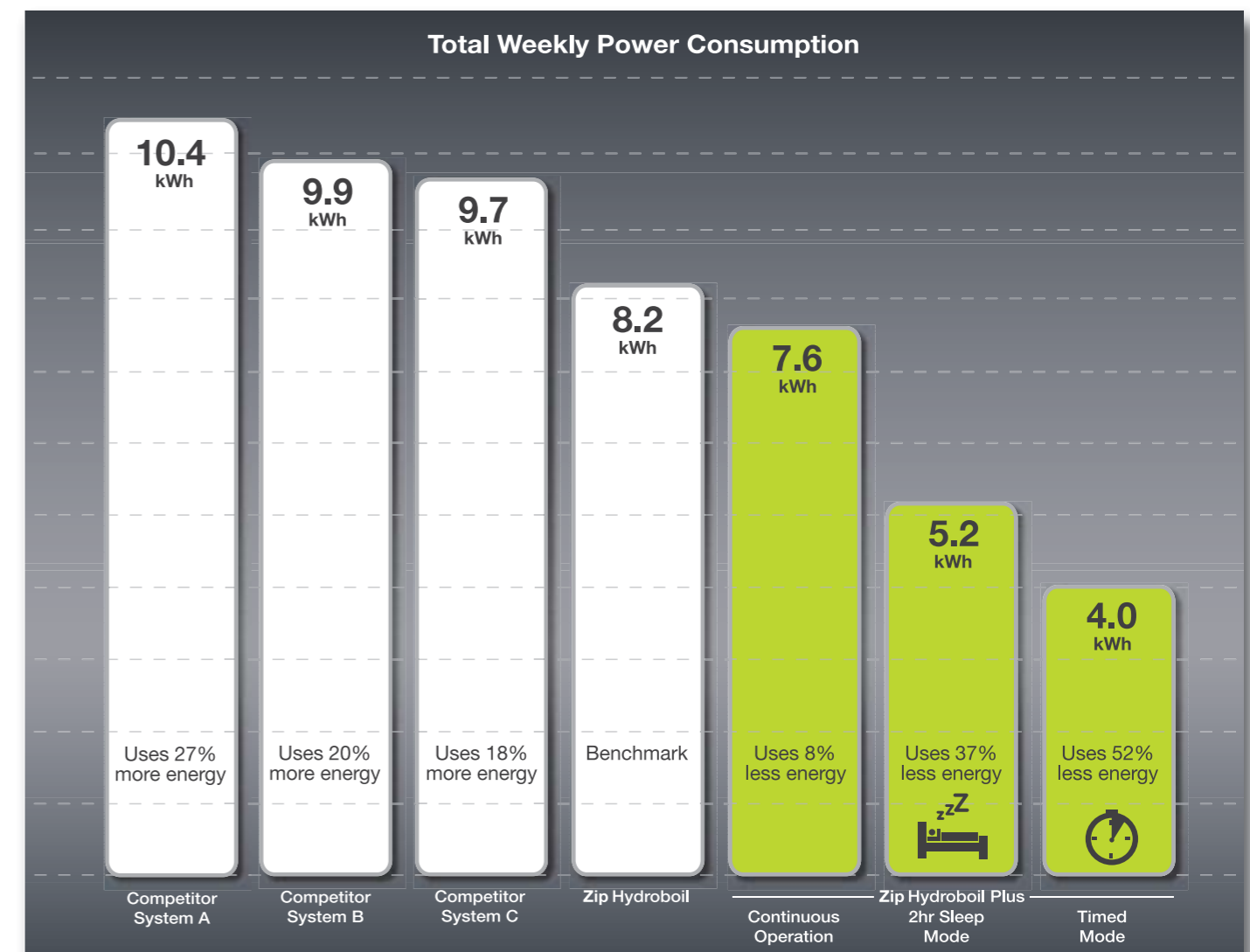
Two year warranty.

On-site parts and labour.

## New electronic Zip Hydroboil Plus: the most energy-efficient instant boiling water system yet

The graphs below compare typical energy usage for a variety of boiling water systems

- All tests were conducted by Aston University, Department of Engineering Systems and Management.
- The results show weekly power consumption based on a working week from 9am to 5pm Monday to Friday.
- The figures exclude any provision for water draw-off. Each 167ml cup drawn off would add 0.016kWh.
- Power consumption from instant boiling water systems is based on continuous operation except where noted otherwise.
- 2hr Sleep Mode = 7 day test with sleep mode effective 7pm to 9am Monday-Friday and all day Saturday and Sunday.
- Timed Mode = 7 day test using integral timer to power OFF 5pm to 9am Monday-Friday and all day Saturday and Sunday.





# Choose the ideal product and capacity to meet your needs

- 1. Estimate the number of cups of boiling water required at any one time.
- 2. Check capacities under the heading of “cups at one time” in the table below.
- 3. Choose a Zip instant boiling water system giving the number of cups required.
- 4. Check case dimensions to ensure top and side clearances can be allowed for.

Remember: busy locations may need more than one Zip to avoid the risk of a queue forming during peak periods.

## Product Selection Table

Case finish		Capacity litres	Delivery Cups*at any one time	Recovery Cups* per hour	Rating kW (@ 230V)	Dimensions (mm)					
Stainless Steel	White					A	B	C	D	E	F
Zip Hydroboil Plus® <i>New</i> with energy saving features and cool touch tap#											
HP103	HP003	3.0	18	100	1.5	431	289	180	198	35	25
HP105	HP005	5.0	30	140	2.4	465	318	198	198	35	25
HP107	HP007	7.5	45	140	2.4	578	318	198	198	35	25
Zip Hydroboil® with Classic tap											
–	HS001	1.5	9	100	1.5	335	289	180	198	35	25
–	HS003	3.0	18	100	1.5	431	289	180	198	35	25
HS105	HS005	5.0	30	140	2.4	465	318	198	198	35	25
HS107	HS007	7.5	45	140	2.4	578	318	198	198	35	25
HS110	HS010	10.0	60	180	3.0	600	390	244	295	41	28
HS115	HS015	15.0	90	180	3.0	600	390	299	295	41	28
HS125	HS025	25.0	150	180	3.0	780	390	299	295	41	28
HS140	HS040	40.0	240	360	6.0	780	390	299	295	41	28
Zip Econoboil® <i>New</i>											
–	HS503	3.0	18	100	1.5	431	289	180	198	35	25
–	HS505	5.0	30	140	2.4	461	318	198	198	35	25

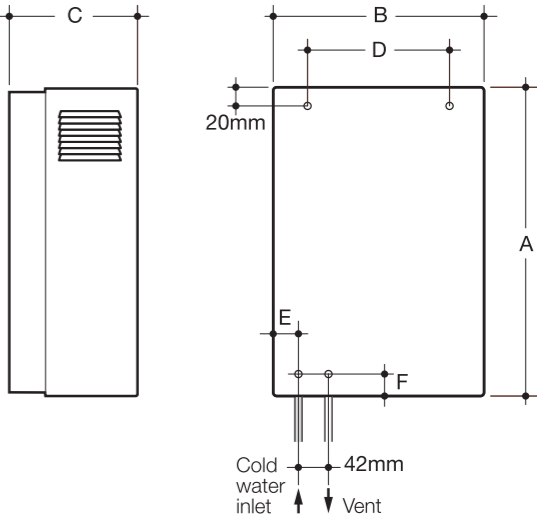
#Supplied with black lever and spout until mid 2009  
\*Standard cup size 167ml

### How frequently should Zip systems be inspected?

Zip maintains a national network of comprehensively-trained Service Engineers to deal promptly with Customer needs.

A range of Preventive Maintenance Plans is also available, providing an annual checkup to help keep your Zip in first-class order.

Call Zip on 0800 077 8302 for details including a free Maintenance Plan quotation tailored to your needs.



# Installation is as simple as A-B-C

## A. Location

The system should be installed over a sink draining board or over a worktop equipped with a portable or plumbed drip tray. Tap outlet clearance to drainer should be no more than 200 mm. Service access clearances must be at least 150 mm above, 65 mm to left, 20 mm to right.

The vent pipe within the case must discharge to a safe visible position as, under certain conditions, it may discharge cold water, boiling water, and/or steam. The vent pipe outlet must be connected via a tun dish to a 12.7 mm OD copper vent pipe which has a continuous fall, is no more than 3 metres long, and has no more than 3 right angle bends.

## B. Electrical

The system should be hard wired to a double pole switched fused spur with a minimum break capacity of 13A. For a neat concealed electrical connection, you can connect cable from the rear directly to the internal terminal block. Installation must comply with current IEE wiring regulations.

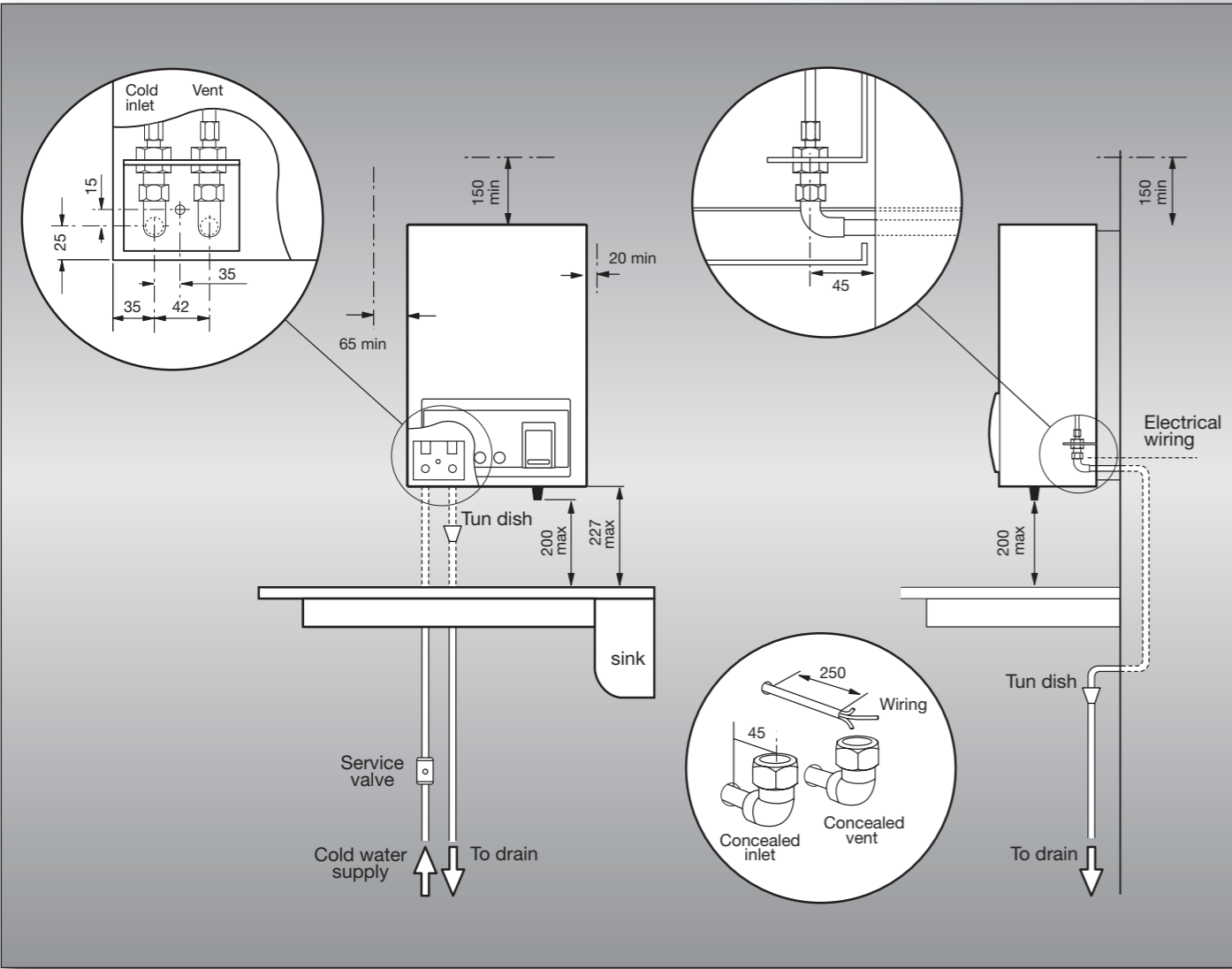
## C. Plumbing

The system must be installed by a qualified tradesperson and in accordance with the instructions supplied with the system. The water supply must be potable (drinkable) and deliver at least 2 litres per minute at a minimum dynamic pressure of 1 bar.

A pressure reducing valve must be installed if water pressure is likely to exceed 7 bar.

A service valve must be installed between the water supply and the system. For a concealed plumbing connection, connect inlet and vent pipes from the rear via 12.7 mm capillary elbows as shown.

For an exposed plumbing connection, connect inlet and vent pipes from the base of the case directly to 12.7 mm compression fittings.



WRAS  
APPROVED  
PRODUCT



Quality  
Endorsed  
Company  
ISO 9001:2000  
Lic OEC1913  
SAI Global

## Accessories

Do you need any of these accessories for your installation?

- Zip In line Water Filtration Cartridge for regular filter replacement – order code FL064, FL104.
- Zip Wall Mounted Tundish for installation with concealed vent plumbing – order code ZD101.
- Zip Sink Mounted Tundish for installation with vent discharging over sink – order code ZD100.
- Zip Drained Drip Tray for installation over a worktop without a draining board – order code ZD001.
- Zip Portable Drip Tray for installation where no drainage can be provided – order code ZD002.



Drip trays – with and without drain - for locations away from sinks



In line filtration kit – for taste and odour removal



Counter stands - for capacities up to 7.5 litres



Wall mounted tundish – for concealed plumbing  
Sink mounted tundish – to drain under sink