

**[200] Hold Recall Time**

Assigns the length of the hold recall timer. Hold recall (a ring tone or an alarm tone) is heard when the timer expires. If hold recall is not required, select “Disable”.

**2** **0** **0** **NEXT** **SELECT** **STORE** **END**

(30 sec/  
1/1.5/2/3/4/5/6 min/  
Disable)

**Default** 30 seconds



- **Feature References**  
Section 3, Features  
Call Park, Hold

**[201] Transfer Recall Time**

Assigns the length of the transfer recall timer. If a transferred call is not answered within the programmed time, the call will be returned to the original caller.

**2** **0** **1** **NEXT** **SELECT** **STORE** **END**

(15/30 sec/  
1/2 min)

**Default** 30 seconds



- **Feature Reference**  
Section 3, Features  
Call Transfer – to Extension

**[202] *Call Forwarding Start Time***

Assigns time for the Call Forwarding – No Answer feature. If a call is not answered within the programmed time, the call will be forwarded to the destination.

2
0
2
NEXT
SELECT
STORE
END  
 (5/10/15/20  
sec delay)

**Default**    15 seconds delay



- **Feature Reference**  
 Section 3, Features  
 Call Forwarding

**[203] *Pickup Dial Delay Time***

Assigns the length of time for the Pickup Dialling feature. If the telephone user lifts the handset, the programmed party is called automatically when the timer expires. This delay gives the user an opportunity to enter numbers before automatic dialling occurs.

2
0
3
NEXT
SELECT
STORE
END  
 (1/2/3/4 sec)

**Default**    3 seconds



- **Feature Reference**  
 Section 3, Features  
 Pickup Dialling

**[204] Call Duration Count Start Time**

Assigns the start time of a conversation either immediately after an exchange line is seized or after dialling. This corresponds to the length of the conversation displayed on the LCD and printed on the printer (SMDR).

**2** **0** **4** **NEXT** **SELECT** **STORE** **END**

(5/10/15/20/25/30/  
35/40/45/50 sec after  
dial/Instantly)

**Default** 10 seconds after dialling



- If reverse signal detection is enabled in program [424] “Reverse (Polarity) Circuit Assignment”, the system will automatically start the timer immediately after an external party answers a call.



- **Feature References**

**Section 3, Features**

Polarity Reverse Detection, Station Message Detail Recording (SMDR)

**[206] Dialling Start Time**

Assigns the minimum length of the pause time the system waits before dialling after seizing an exchange line.

**2** **0** **6** **NEXT** **SELECT** **STORE** **END**

(0/250/500/750/  
1000/1250/1500 ms)

**Default** 0 millisecond



- **Feature Reference**

**Section 3, Features**

Outside Calling

**[207] *Recall Timing Range Selection***

Sets the hookswitch recall time range sent from an extension to the system.

**MODE 1:** 50 to 180 milliseconds.

**MODE 2:** 80 to 180 milliseconds.

**MODE 3:** 80 to 650 milliseconds.

**MODE 4:** 80 to 1000 milliseconds.

**MODE 5:** 200 to 1000 milliseconds.



(MODE1/MODE2/  
MODE3/MODE4/  
MODE5)

**Default**    MODE 1



• **Feature Reference**

Section 3, Features

Recall Button on a Single Line Telephone

**[208] *Interdigit Time***

Assigns the maximum time allowed between digits for an outgoing outside call.



(5/10/15/20 sec)

**Default**    20 seconds



- The interdigit timer applies until the call barring check is completed. When the timer expires, an outgoing outside call will be disconnected while dialling, if “Enable” was selected in program [211] “No Dial Disconnection”.
- For a single line telephone, an outgoing outside call will be released from a DTMF receiver when the interdigit timer expires.



• **Feature Reference**

Section 3, Features

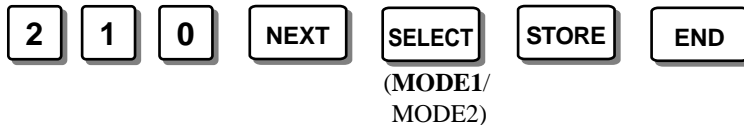
Call Barring

**[210] *DTMF Time***

Assigns the minimum duration of a DTMF signal sent to an exchange line which is set to the DTMF mode in program [401] “Dial Mode”.

**MODE 1:** 80 milliseconds

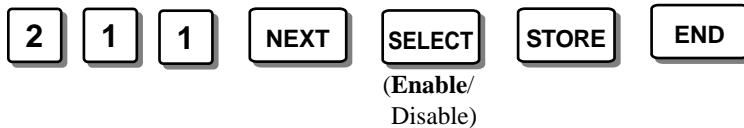
**MODE 2:** 160 milliseconds



**Default**      MODE 1

**[211] *No Dial Disconnection***

Enables or disables disconnecting an exchange line if an extension user does not dial anything within 20 seconds after an exchange line is seized.



**Default**      Enable (Disconnect)



- The interdigit timer assigned in program [208] “Interdigit Time” applies until the call barring check is completed. When the timer expires, an outgoing outside call will be disconnected while dialling, if “Enable” was selected in this program.



- **Feature Reference**  
Section 3, Features  
Call Barring

**[212] Exchange Line Duration Time Limit**

Sets the maximum time allowed for a conversation with an external party. This program is effective for the extension(s) which assigned “Enable” in program [613] “Exchange Line Duration Time Limit Selection”.

2
1
2
NEXT
time
STORE
END  
 (1-32 minutes)

**Default** 10 minutes



- A beep sounds at 5-second intervals 15 seconds before the programmed time expires.
- This program is effective only for an outgoing outside call.
- When making a call after an exchange line is seized and transferred to the enabled extension in program [613] by another extension, the timer starts after the call has been transferred.



- **Feature Reference**  
 Section 3, Features  
 Limited Call Duration

**[213] Bell Off Detection**

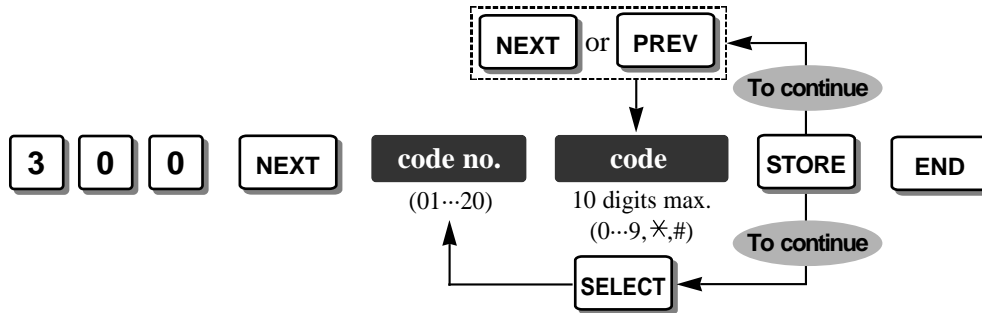
Sets the maximum time between detecting one bell signal and the next from the Local Exchange. In case the next bell signal is not detected within the programmed time, the system recognises the bell signal has stopped.

2
1
3
NEXT
SELECT
STORE
END  
 (3/6/12 sec)

**Default** 3 seconds

**[300] Carrier Excepted Code Assignment**

Assigns up to 20 carrier excepted codes, for example, Per Call Block code ( \* 141). The system disregards the assigned code, and call barring and ARS are applied to the numbers after the code.



**Example:**

Code no. 01: \* 141

Dialling number: \* 141 01633 877 467

disregarded applied to the call barring and ARS

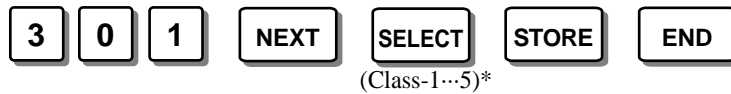
**Default** All codes – Not stored.



- “x” (press the PAUSE button) substitutes any number (= wild card).
- To correct a wrong entry, press the CLEAR button and enter the new one.

**[301] Call Barring – System Speed Dialling Boundary Class**

Assigns the call barring class for System Speed Dialling numbers. System Speed Dialling numbers can be assigned in program [001] “System Speed Dialling Entry”.



\* Boundary Class: 1 through 5

**Default** Boundary Class -1



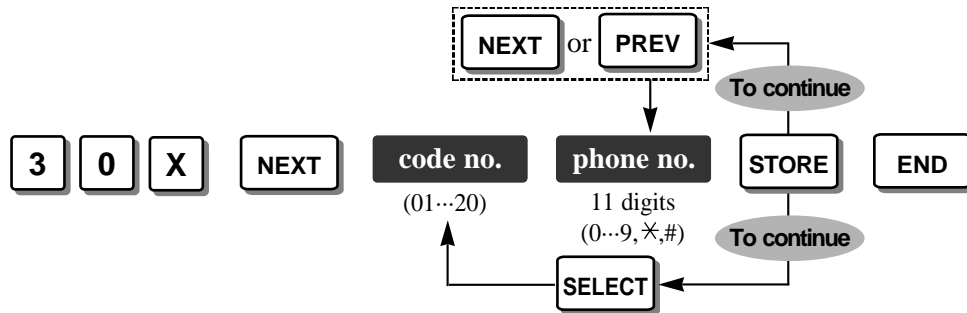
**• Feature Reference**

Section 3, Features

Call Barring for System Speed Dialling

**[302]-[305] Call Barring – Classes 2 through 5 Denied Codes**

Assigns up to 20 toll call numbers which are restricted to make outside calls on a class of service (COS) basis for each program.



X – Program address selection number: 2 ([302] for Class 2) / 3 ([303] for Class 3) / 4 ([304] for Class 4) / 5 ([305] for Class 5)

**Default** All codes – Not stored.

- ! • “x” (press the PAUSE button) substitutes any number (= wild card).
- Each phone number should consist of 11 digits.
- To correct a wrong entry, press the CLEAR button and enter the new one.

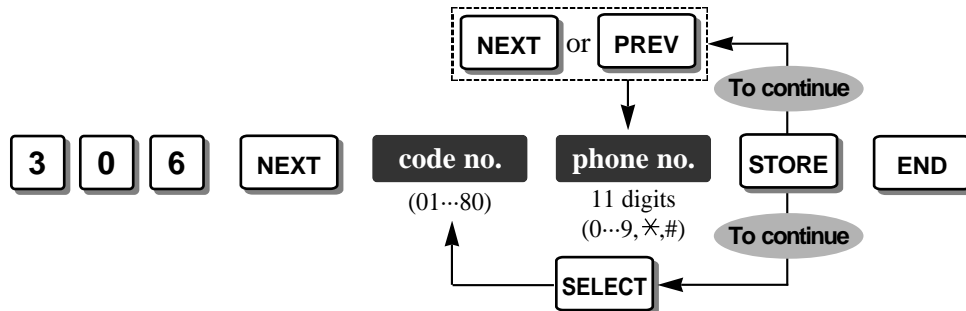


- **Feature Reference**  
Section 3, Features  
Call Barring



**[306] Call Barring – Exception Codes**

Assigns up to 80 exception numbers which are allowed to make outside calls on a class of service (COS) basis even when denied codes are programmed in [302]-[305] “Call Barring – Classes 2 through 5 Denied Codes”.



**Default** All codes – Not stored.



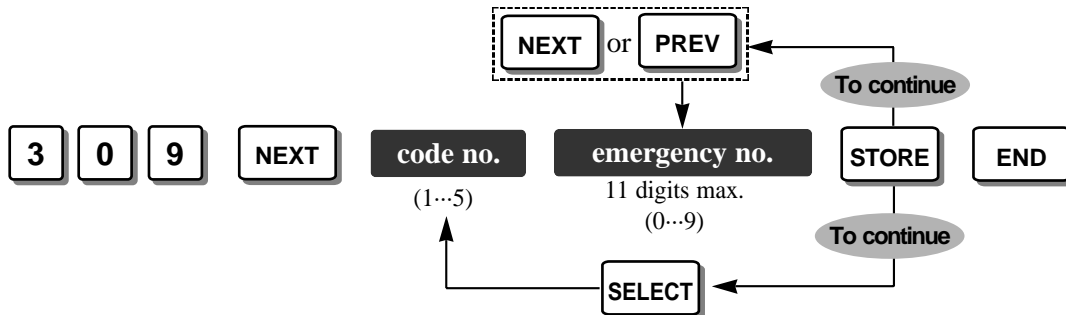
- “x” (press the PAUSE button) substitutes any number (= wild card).
- Each phone number should consist of 11 digits.
- To correct a wrong entry, press the CLEAR button and enter the new one.



- **Feature Reference**  
Section 3, Features  
Call Barring

**[309] Emergency Dial Number Set**

Assigns up to 5 emergency numbers, for example, a police station or fire station. Calls with these numbers are free from restrictions, for example, call barring, Account Code – Forced/Verify–All mode and Electronic Extension Lock.



**Default** Code-01 = 999, Code-02 = 112, Other codes = Not stored.



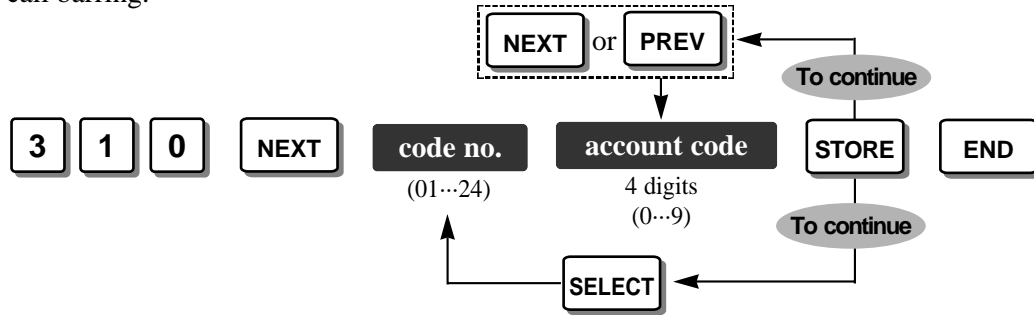
- To correct a wrong entry, press the CLEAR button and enter the new one.



- **Feature References**  
Section 3, Features  
Emergency Call, Call Barring

**[310] Account Codes**

Assigns up to 24 account codes which are compared with the code entered when “Verify-All” or “Verify-Toll (Call Barring)” is selected in program [605] “Account Code Entry Mode”. If “Verify-All” is selected, an account code is required to make an outside call. If “Verify-Toll (Call Barring)” is selected, an account code is only required to override call barring.



**Default** All codes – Not stored.



- To correct a wrong entry, press the CLEAR button and enter the new one.



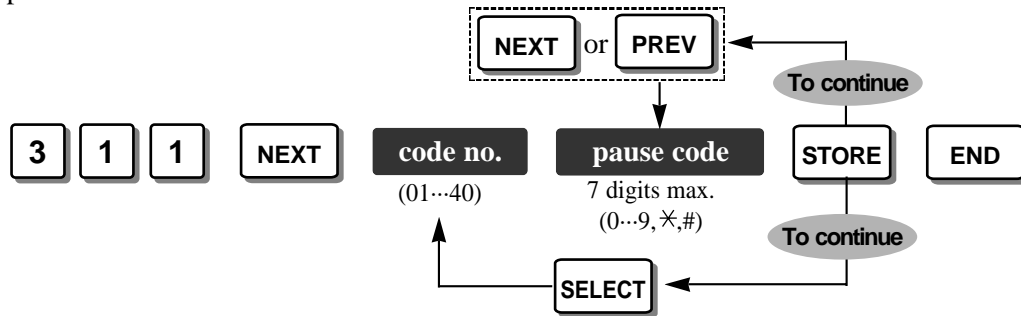
• **Feature References**

Section 3, Features

Account Code Entry, Call Barring Override by Account Codes

**[311] Automatic Pause Insertion Codes**

Assigns up to 40 automatic pause insertion codes which are checked with the outside outgoing call number. When one of the codes is the same as the call number, the pause time assigned in program [417] “Pause Time” is automatically inserted after the code. If a second dial tone is sent from your Local Exchange, it is convenient to assign the area code as the pause code.



**Default** All codes – Not stored.



- To correct a wrong entry, press the CLEAR button and enter the new one.

**[312] *Call Barring – Extension Lock Boundary Class***

Assigns the Call Barring class for an extension which has set the Electronic Extension Lockout or Remote Extension Lock Control.



\* Boundary COS: 2 through 5 / Disable (Disables all outside outgoing calls.)

**Default**    Disable



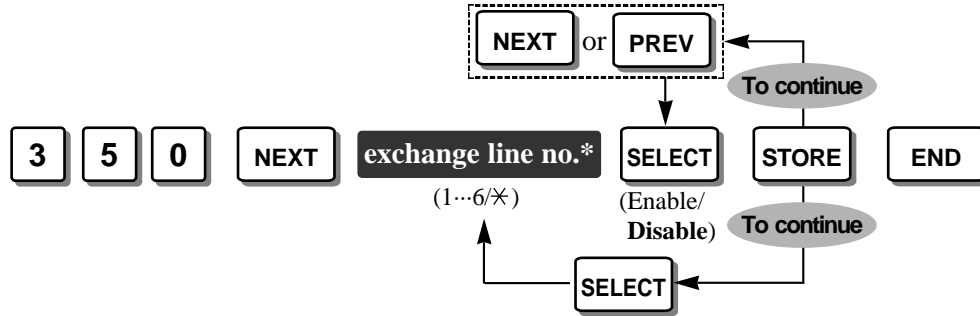
• **Feature Reference**

Section 3, Features

Call Barring – Extension Lock Boundary Class

**[350] ARS Selection**

Enables or disables the ARS feature for each exchange line.



\* Exchange line number: 1 through 6 / \* (All exchange lines)

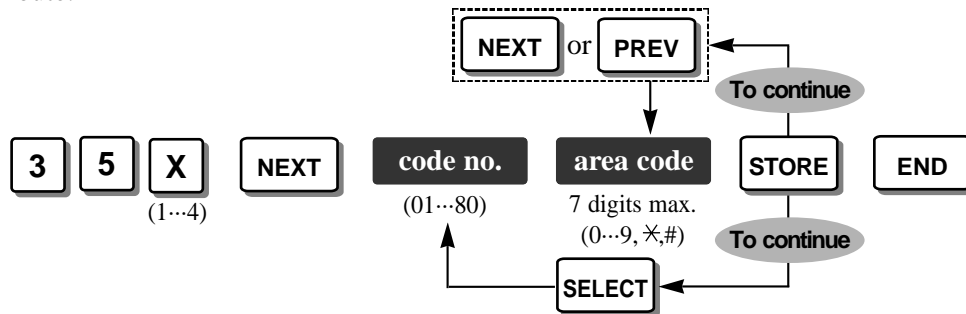
**Default** All exchange lines – Disable



- **Feature Reference**  
Section 3, Features  
Automatic Route Selection (ARS)

**[351]-[354] Routes 1 through 4 Selection Codes (Leading Digits)**

Assigns up to 80 area codes for outside calls which are applied to the ARS feature for each route.



**X** – Program address selection number: 1 ([351] for Route 1) / 2 ([352] for Route 2) / 3 ([353] for Route 3) / 4 ([354] for Route 4)

**Default** All codes – Not stored.



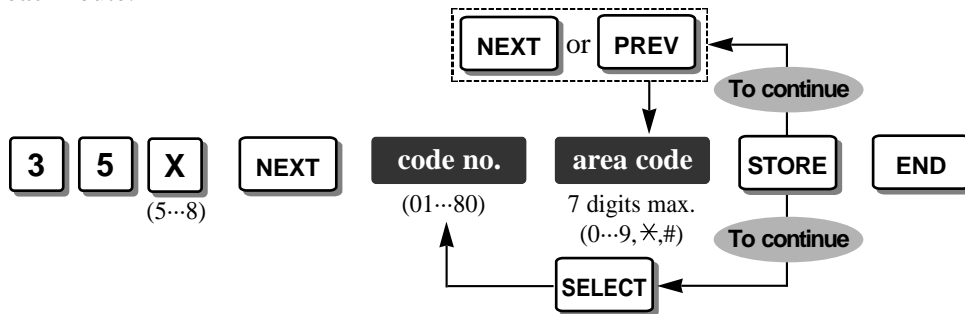
- “x” (press the PAUSE button) substitutes any number (= wild card).
- To correct a wrong entry, press the CLEAR button and enter the new one.



- **Feature Reference**  
Section 3, Features  
Automatic Route Selection (ARS)

**[355]-[358] Routes 1 through 4 Exception Codes**

Assigns up to 80 area codes for outside calls which are not applied to the ARS feature for each route.



**X** – Program address selection number: 5 ([355] for Route 1) / 6 ([356] for Route 2) / 7 ([357] for Route 3) / 8 ([358] for Route 4)

**Default** All codes – Not stored.



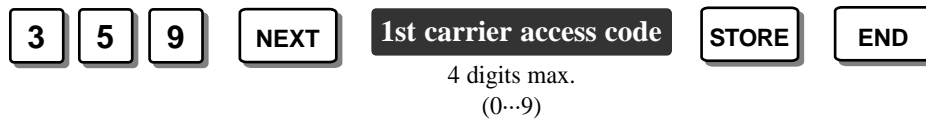
- “x” (press the PAUSE button) substitutes any number (= wild card).
- To correct a wrong entry, press the CLEAR button and enter the new one.



- **Feature Reference**  
Section 3, Features  
Automatic Route Selection (ARS)

**[359] 1st Carrier Selection Code (BT Line Access Code)**

Assigns the first carrier access code. When the code is dialled, the first carrier is always selected even if the ARS feature is enabled.



**Default** 121 (British Telecom Line access code)



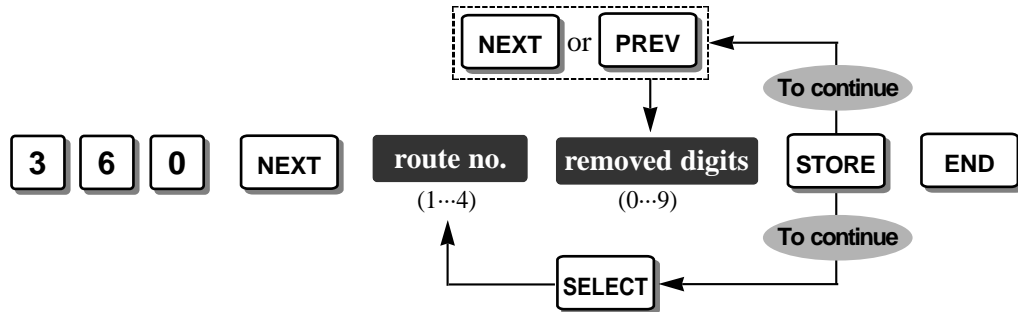
- To correct a wrong entry, press the CLEAR button and enter the new one.



- **Feature Reference**  
Section 3, Features  
Automatic Route Selection (ARS)

**[360] ARS Modification – Removed Digits**

Determines how the dialled number applied to the ARS feature should be modified before sending to the exchange line for each route. The digits are deleted from the beginning of the dialled number.



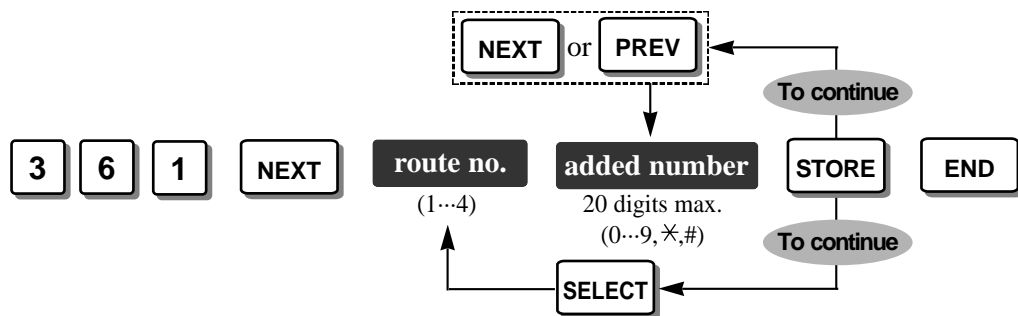
**Default** All routes – 0 (No deletion)



- **Feature Reference**  
Section 3, Features  
Automatic Route Selection (ARS)

**[361] ARS Modification – Added Number**

Determines how the dialled number applied to the ARS feature should be modified before sending to the exchange line for each route. Numbers are added to the beginning of the dialled number. Numbers can be carrier codes, etc.



**Default** Route 1 = 131, Other routes = Not stored.



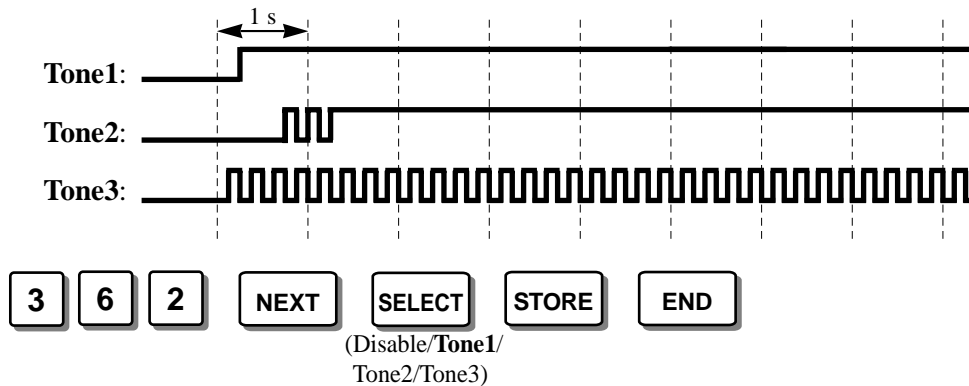
- To correct a wrong entry, press the CLEAR button and enter the new one.
- Press to scroll the display to the right side.
- The assigned numbers will be added to the dialled number after deleting the digits programmed in [360] “ARS Modification — Removed Digits”.



- **Feature Reference**  
Section 3, Features  
Automatic Route Selection (ARS)

**[362] ARS Dial Tone Pattern Selection**

Selects the dial tone pattern, **Disable** (no tone), **Tone1**, **Tone2** or **Tone3**, generated after seizing an ARS exchange line. The ARS feature is enabled on an exchange line basis in program [350] “ARS Selection”. The tone will stop after the first digit (except for an account code) is dialed.



**Default**    Tone1



- **Feature Reference**  
Section 3, Features  
Automatic Route Selection (ARS)

**[363] ARS Interdigit Time**

Assigns the interdigit timer (in seconds) used while the system is checking the dialed number for the ARS feature.



**Default**    5 seconds



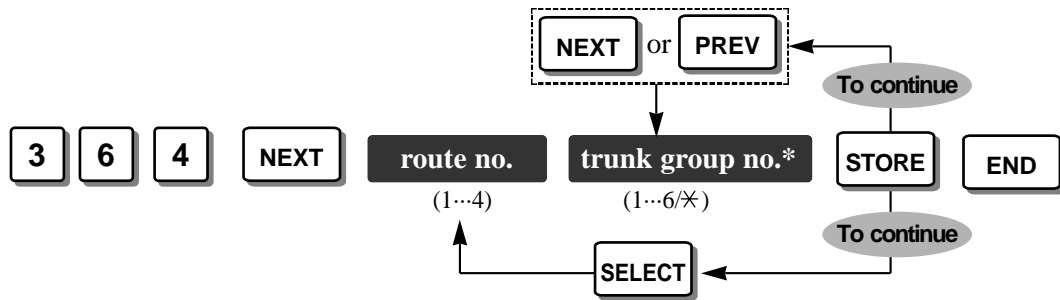
- This assignment should be the same as the interdigit timer assigned in program [208] “Interdigit Time”.



- **Feature Reference**  
Section 3, Features  
Automatic Route Selection (ARS)

**[364] ARS Trunk Group**

Assigns trunk group(s) for each ARS route number. Trunk groups are assigned in program [404] “Trunk Group Assignment”. An exchange line in the assigned trunk group(s) is automatically seized when making an outside call using the Automatic Exchange Line Access number (9 or 0), and the dialed number is applied to one of the ARS route numbers.



\* Trunk (TRK) group number: 1 through 6 / \* (All trunk (TRK) groups)

**Default** All routes – \* (All trunk (TRK) groups)

**!** • Programs [351]-[354] “Routes 1 through 4 Selection Codes (Leading Digits)” should be considered when assigning this program.

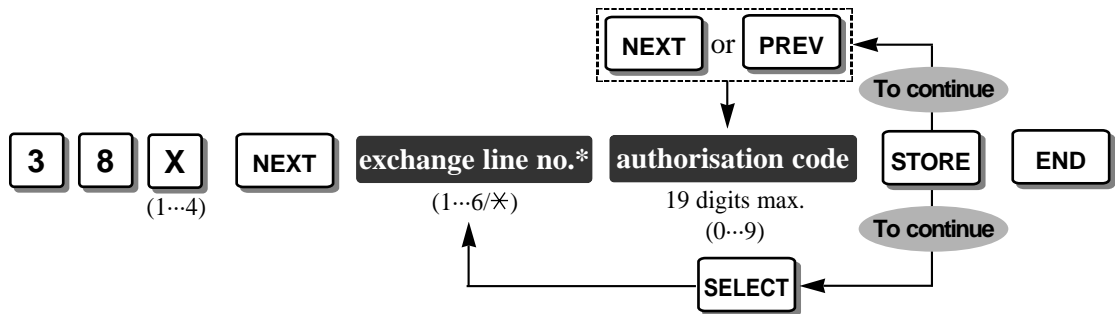


• **Feature Reference**  
 Section 3, Features  
 Automatic Route Selection (ARS)



**[381]-[384] Routes 1 through 4 Authorisation Codes**

Registers an authorisation code applied to the exchange line(s).



**X** – Program address selection number: 1 ([351] for Route 1) / 2 ([352] for Route 2) / 3 ([353] for Route 3) / 4 ([354] for Route 4)

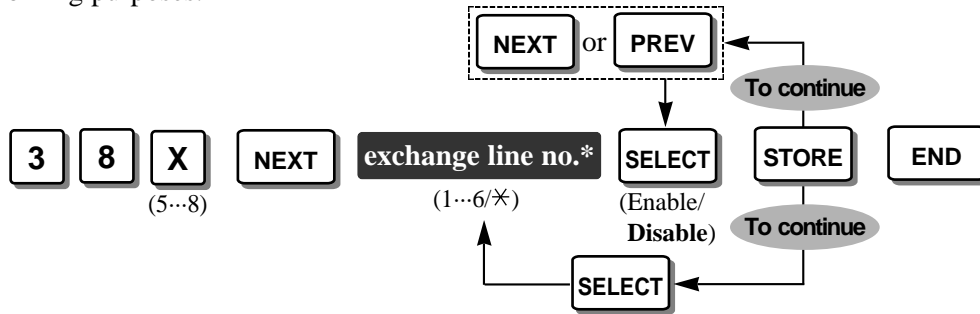
\* Exchange line number: 1 through 6 / \* (All exchange lines)

**Default** All exchange lines – Not stored.

- !** The registered codes are not shown on the display of a proprietary telephone and printout by program [804] “System Data Dump” after programming. “Already Set” will be shown instead of the registered codes.

**[385]-[388] Routes 1 through 4 Itemised Bill**

Enables or disables to add an extension number assigned in program [389] “Itemised Bill Code Assignment” after the authorisation code for an exchange line(s). This is useful for billing purposes.



**X** – Program address selection number: 5 ([385] for Route 1) / 2 ([386] for Route 2) / 3 ([387] for Route 3) / 4 ([388] for Route 4)  
 \* Exchange line number: 1 through 6 / \* (All exchange lines)

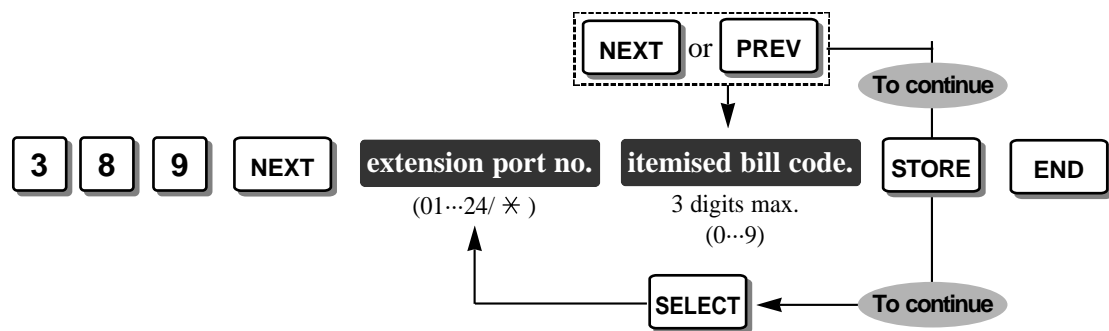
**Default** All exchange lines – Disable



- **Feature Reference**  
 Section 3, Features  
 Automatic Route Selection (ARS)

**[389] Itemised Bill Code Assignment**

Assigns the itemised bill code for each extension for dividing a bill.



\* Extension port number: 01 through 16 / \* (All extension ports)

**Default** Extension ports 01 through 24 – 201 through 224



- **Feature Reference**  
 Section 3, Features  
 Automatic Route Selection (ARS)