

E.Z.-UDVR LT

Quick Installation Guide



This guide gives the basic minimum information required to set up the EZ-UDVR LT with remote viewing. You will need a video/CCTV feed or feeds. A PC located at the site of the video/CCTV feed (This will be known as the server PC) connected to the internet or local network. For remote viewing you will also need a PC connected to the internet or a local network at the site where you wish remote viewing to take place (This will be known as the client PC)

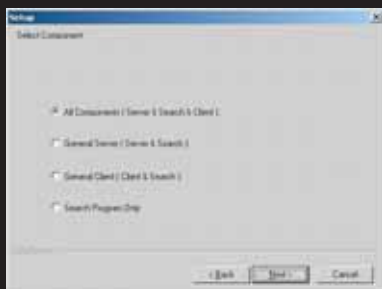
Order of Installation

- Creation of the Server PC
- Decide location of CCTV system
 - Installation CCTV system
 - Choose suitable PC at location of CCTV system
 - Install EZ-UDVR LT software (Server version)
 - Connect EZ-UDVR LT via USB to same PC
 - Launch server software on PC
 - If required set up access rights from other PCs(Client)

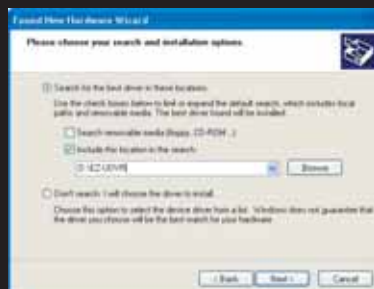
- Creation of the Client PC
- Install software (Client version only) to remotely located PC
 - Create details of server
 - Connect via either fixed IP address if available or EZ-UDVR LT serial code if not.

1. SERVER INSTALLATION – At Server PC

- 1) Complete hardware connections of CCTV system and EZ-UDVR (Do not connect to PC at this time)
- 2) Load EZ-UDVR software CD onto PC
- 3) Select – All Components
 - User Name - Your name or location
 - Company Name - If applicable
 - Serial Number - Found inside product box (Please note this number is case sensitive)
- 4) Follow on screen instructions.
- 5) After software installation complete please re-boot PC



- 6) Connect EZ-UDVR to PC via USB port
- 7) Follow on-screen “New hardware Instruction” Check the option of “Install from a list or specific location [Advanced]”.



- 8) From desktop select EZ-UDVR LT server icon.



* E.Z.-UDVR LT Server icon



, Client icon



, Search icon

- 9) Refer to main user manual for full operational details.

NB Default USER ID = admin
Default Password = master

www.espuuk.com

2. CLIENT INSTALLATION – At Server PC

Before setting up remote access please consider firewalls, controlled gateways or anti-virus software that may be employed on either the server or client PC. If in doubt consult your IT engineer.

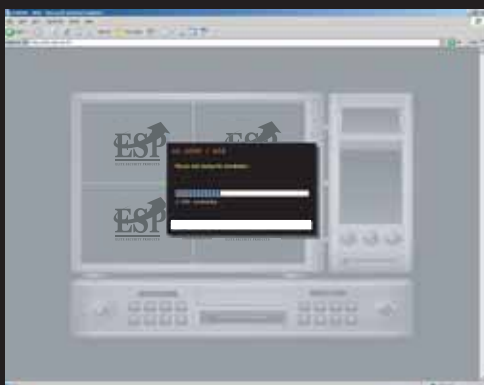
- 1) Firstly set up the prospective clients (remote users) at the "Server" PC
- 2) Launch server software on server PC as before
- 3) Select Tool Box icon (Blue circle with image of tools)
- 4) Enter User ID and Password (admin/master)
- 5) Select user registration tab
- 6) Select Add Enter USER ID – Name of prospective remote client (ie Home, Offices etc)
 PASSWORD – any suitable password
 USER LEVEL – select required level
- 7) Select Add for subsequent clients
- 8) After adding all prospective clients click save config as
- 9) Select save



www.espuk.com

3. CLIENT INSTALLATION – At Client PC

- 1) Insert EZ-UDVR LT software CD
- 2) Select install at CD drive
- 3) Select Setup
- 4) Select General Client
- 5) Next
- 6) Follow on screen instructions and re-boot PC
- 7) After re-boot select EZ-UDVR LT Client icon on desktop
- 8) Select toolbox icon (Blue circle with tool images)
- 9) Select Local – O.K
- 10) Enter Password – Default 1111
- 11) Select server registration
- 12) Select Add
- 13) Sever name - Name of server that you are connecting to
- 14) IP/Product number - Server PC IP address or EZ-UDVR LT serial number
- 15) User ID you previously added to client registration at server PC.
- 16) O.K
- 17) Select connect button
- 18) Refer to full user manual for detailed operational information.



4. Web viewing through IE (Internet Explorer)

4.1 Access to ezudvr.com through Internet Explorer

- 1) Type <http://www.ezudvr.com> in the address window in the Internet Explorer
- 2) Now it is on the way to download the needed components. It might take a few second or minute up to the network situation. Please don't close the window and wait till the next dialog comes up.

4.2 Access to ezudvr.com through Internet Explorer

- 1) Setup the server registration with the product ID or IP address of which the Server EZ-UDVR has.
- 2) Then, now you can connect the Server EZ-UDVR LT you want to remotely access through Internet Explorer.
- 3) For the detail on the server registration setup, please refer to the Installation Guide in the provided CD.

5. E.Z.-UDVR LT Package Contents

1pc x E.Z.-UDVR LT system

4pcs x BNC/RCA Converting cable

1pc x 1m USB cable

Installation CD

(Inc. Server Program, Client Program & Search Program and User's Guide)

Quick Installation Guide

E.Z.-UDVR LT is designed with applying Original Certification System Code to prevent unauthorized Copy.

E.Z.-UDVR LT is designed to operate after its authorized approval code is matched with Software program.

ESP - Electronics Line UK Ltd
Unit 7, Levis Trading Estate, Station
Road, Stechford, Birmingham B33 9AE
Tel: (+44-121) 789 8111 Fax: (+44-121)
789 8055 info@espuk.com



www.espuk.com

Minimum & Recommended PC Requirements

CPU : Above Pentium-III 800Ghz (Recommend : Above Pentium-IV 1.6Ghz)

Graphic card memory : Above 64Mbyte (Recommend : Above 128Mbyte)

Recommended Graphic card : RIVA TNT2, GeForce2MX100/200, GeForce2MX400, ATI XPERT2000Pro, ATI RADEON7200

Hard-disk : Above 3Gbyte (Recommend : Above 40Gbyte)

Windows : Windows2000, NT, 2003, XP