



# FLAMBEAU

*Lighting...New Orleans Style*



COMBINING ART AND DESIGN WITH INTRIGUING FUNCTION, THE DESIGNERS AT FLAMBEAU HAVE CREATED A STUNNING COLLECTION OF LUMINAIRES.

FLAMBEAU SHOWCASES THE WORKS OF RENOWNED NEW ORLEANS DESIGNERS PAUL GRÜER AND ELAINE GLEASON, AS WELL AS BATON ROUGE SCULPTOR, BENJAMIN BURTS. EACH DESIGNER AND ARTIST HAS UNITED SOPHISTICATED FORMS AND SHAPES WITH DISTRESSED FINISHES OF GOLD AND SILVER PATINAS TO CREATE 21ST CENTURY ANTIQUES.

WITH METICULOUS ATTENTION-TO-DETAIL AND QUALITY MANUFACTURING, FLAMBEAU'S LAMPS, CHANDELIERS, PENDANTS, AND SCONCES WILL ADD A TOUCH OF INTRIGUE AND WHIMSY TO ANY ROOM. OFTEN FLAMBEAU LIGHTING'S DESIGNS BECOME THE CONVERSATION PIECE IN THE MOST DISTINCTIVE INTERIOR ENVIRONMENTS.

IN MARCH 2012, FLAMBEAU PARTNERED WITH ELSTEAD LIGHTING AS THEIR EUROPEAN AND SPECIALIST 220-240V MARKET DISTRIBUTOR.



**FLAMBEAU**

*Lighting...New Orleans Style*

# The Designers



**Paul  
Grüer**

"I have always been influenced by the city of New Orleans. The patina of age and gentle decay has found its way into the finish of my work. Like the city, sophisticated, fun and always just a little off-center".

Whether as an art gallery director, sculptor, or designer of fine jewellery, this long-time resident of the "Big-Easy" and his work, have for years been an integral part of the New Orleans art scene. Chosen as the top artist in New Orleans and recipient of the WYES Patron Artist Award, Grüer has also been nationally recognised winning Alpha Awards for his textile and lighting designs.

Grüer's use of lighting as an expression of his creativity first came about when a friend challenged him to create a chandelier to look like a pair of earrings he had designed for her. Pleased with the results, he soon began creating other sculptural lighting pieces inspired by his jewellery designs, and for years, these one-of-a-kind custom pieces were commissioned and sold only through a hand full of select art galleries and interior designers. In 2001, Grüer entered into a licensing agreement with Flambeau Lighting to create an ongoing series that would be crafted and finished by artisans, in much the same manner as his original Studio pieces.

Today, Paul Grüer's "FLAMBEAU Lighting Collection" is a gallery of sculptural, functional art that manifests itself in the form of table lamps, floor lamps, chandeliers, pendants, mirrors and sconces. He has created a collection that is certain to add intrigue to any interior design.



**Elaine  
Gleason**

Elaine Gleason designs and constructs striking lighting fixtures for both residential and commercial interiors. These sculptures are inspired by the rhythm and ambiance of her native New Orleans.

For 10-years Gleason has focused on the design and manufacture of metal furniture and lighting at her New Orleans studio. Her designs are evocative of the culture she lives in; the classic architecture, the indigenous music, and lush foliage that saturates New Orleans.

Gleason's art has been shown at the New Orleans Jazz Fest, Art in Bloom at the New Orleans Museum of Art, D.O.C.S. Gallery, New Orleans Academy of Fine Art, Philadelphia Rosen Show, as well as at the International Atlanta Gift Show, New York International Gift Show and the High Point Furniture Market.

She studied art at the University of Arizona, and received here BFA degree, with a focus on Sculpture, from the University of Georgia.



**Benjamin  
Burts**

There is a life force palpable in every Benjamin Burts creation. From a genesis of cold clay evolve works of art that exude an almost human warmth and texture. Burts says he doesn't put it there; he says it is there.

"I work with clay in a very free, spontaneous way, allowing it to become what it wants to become. I start with an idea, but the idea only motivates me to begin. Then it becomes a collaboration between the clay and me to see what it is supposed to be," says Burts.

Faces and spiritual forms rise ethereally to the surface in many of his designs and through a unique surfacing technique after kiln firing, he applies gold and silver colouring, "colours natural to the surface, shape and form," remarks Burts.

His work has been exhibited in fine galleries across the USA. He is inspired by neoclassic design blended with the culture of the New Orleans Garden district.



“Years of walking down Royal Street in the French Quarter, seeing elegant French antiques and palm trees hidden behind garden walls, has inspired the Mignon chandelier. A subtle mix of the time worn textures and quietly elegant shapes has come together to give a hint of the secret luxury of times gone by.”

*Paul Grüer*

## FB/MIGNON8 (CH1111) CHANDELIER

CRYSTAL TEARDROPS ACCENT  
ANTIQUÉ GOLD LEAF FINISHED  
BOBECHEs, AND STAR DETAILS  
WITH SILVER RINGS

H:737MM W:635MM D:635MM  
CHAIN: 1829MM  
8 X E14 60W  
© 2007 PAUL GRÜER







## FB/KRISTAL LUXE6 (CH1040) CHANDELIER

FACETED GLASS NESTS EXTEND  
OUTWARD BELOW EACH LIGHT ON  
THIS CHANDELIER.  
SILVER BANDS BORDER THE  
ANTIQUED SHADE BODY.

H: 775MM W: 762MM D: 762MM  
CHAIN: 1829MM  
6 X E27 60W  
© 2007 PAUL GRÜER



## FB/KRISTAL/TL (TA1045) TABLE LAMP

FEATURING AN INVERTED PUTTY  
COLOUR ACID WASHED SHADE, AND  
DELICATE GOLD LEAF BRANCHES  
THAT SPIKE CUT GLASS JEWELS ON  
GOLD LEAF METAL STEM.

H: 914MM W: 406MM D: 406MM  
1 X E27 60W  
© 2002 PAUL GRÜER



## MAIDEN VOYAGE FB/MAIDEN VOY6 (CH1016) CHANDELIER

SIX-ARM CHANDELIER ADORNED  
WITH CRYSTALS AND SILVER SHADES.

H: 902MM W: 813MM D: 813MM  
CHAIN: 1829MM  
6 X E27 60W  
© 2007 PAUL GRÜER



## FB/REMI5 (CH1109) CHANDELIER

SILVER AND CREAM ACCENTS  
COMBINED WITH SCULPTED  
ELEMENTS MAKE THIS FIVE-ARM  
CHANDELIER UNIQUE. THE SHADES  
ALSO FEATURE A GRAY AND WHITE  
CRACKLE EFFECT FINISH, WHICH  
COMPLEMENT THE ACCENTS.

H: 584MM W: 762MM D: 762MM  
SHADES: 152MM X 203MM  
CHAIN: 1829MM  
5 X E14 60W  
© 2007 PAUL GRÜER



FB/DIEGO4  
(CH1153-4) CHANDELIER







## FB/DIEGO4 (CH1153-4) CHANDELIER

TAUPE SHADES ENCIRCLED  
BY GOLD TWISTED BARBS CROWN  
THE CRYSTAL SPIKES OF THIS  
UNIQUE FOUR-ARM CHANDELIER

H:737MM W:711MM D:711MM  
SHADES: 178MM X 203MM  
CHAIN: 1829MM  
4 X E14 60W  
© 2008 PAUL GRÜER



## FB/DIEGO1 (SC1153-1) SCONCE

TAUPE SHADE AND GOLD TWISTED  
BARBS HIGHLIGHT THIS WALL  
SCONCE WITH A CRYSTAL ACCENT

H:610MM W:229MM D:330MM  
1 X E27 60W  
© 2008 PAUL GRÜER



“ *Bon Vivant: A person devoted to refined sensuous enjoyment, one who enjoys the luxuries in life.* ”

*The "Bon Vivant" collection could have easily graced many an elegant room, illuminating late evening celebrations of days gone by. Now you can illuminate yours with the gentle sparkle of crystals and subtle time worn finishes. ”*

*Paul Grüer*



## FB/BON VIVANT8 (CH1160-8) CHANDELIER

H:940MM W:838MM D:838MM  
CHAIN: 1829MM  
8 X E14 60W  
© 2008 PAUL GRÜER



FB/BON VIVANT3  
(CH1160-3) CHANDELIER

H:660MM W:483MM D:483MM  
CHAIN: 1829MM  
3 X E14 60W  
© 2008 PAUL GRÜER



FB/BON VIVANT5  
(CH1160-5) CHANDELIER

THE BON VIVANT COLLECTION TIES CLASSIC DESIGN WITH MODERN. IT FEATURES A GILDED BODY WITH CANDLE-LIKE FIXTURES ADORNED WITH CRYSTALS, TASSELS AND SCULPTED BOBECHÉ

H:787MM W:711MM D:711MM  
CHAIN: 1829MM  
5 X E14 60W  
© 2008 PAUL GRÜER



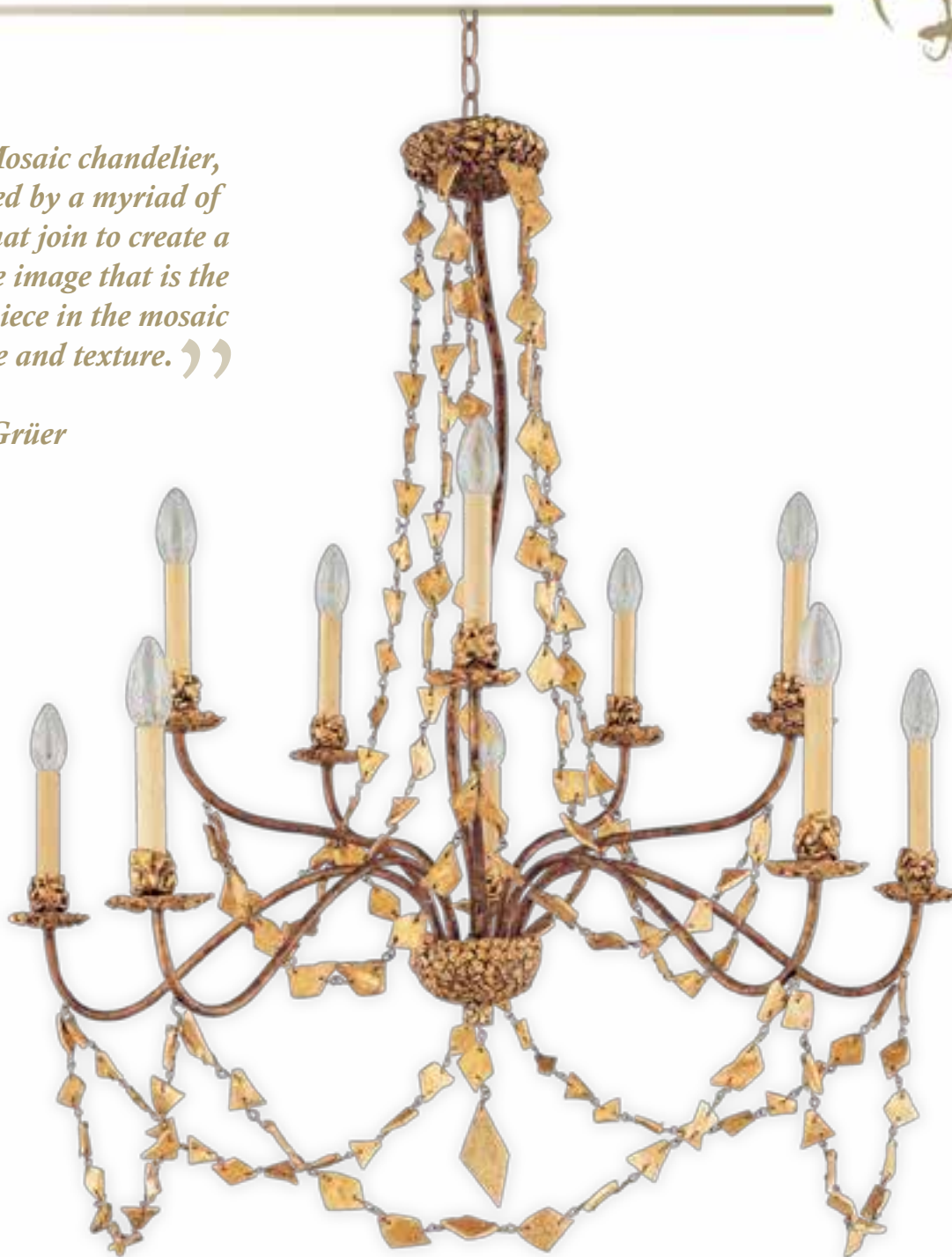


FB/MOSAIC10  
(CH1158-10) CHANDELIER



“ *The Mosaic chandelier, inspired by a myriad of tiles that join to create a unique image that is the final piece in the mosaic of style and texture.* ”

*Paul Grüer*



## FB/MOSAIC10 (CH1158-10) CHANDELIER

STRANDS OF MOSAIC JEWELS DETAIL  
THIS TEN ARM CHANDELIER

H:991MM W:940MM D:940MM  
CHAIN: 1829MM  
10 X E14 60W  
© 2008 PAUL GRÜER





## FB/CROWN4 (CH1154-4) CHANDELIER

SILVER FLEUR DE LIS AND SCULPTED ELEMENTS ADD CHARACTER AND STYLE TO THIS BENJAMIN BURTS' FOUR-ARM CHANDELIER.

H:584MM W:711MM D:711MM  
CHAIN: 1829MM  
4 X E14 60W  
© 2008 BENJAMIN BURTS

## FB/CROWN/P (LAN1154-4) LANTERN

SILVER FLEUR DE LIS AND SCULPTED ELEMENTS ADD CHARACTER AND STYLE TO THIS BENJAMIN BURTS' FOUR-LIGHT LANTERN DESIGN

H:787MM W:330MM D:330MM  
CHAIN: 1829MM  
4 X E14 60W  
2008 BENJAMIN BURTS





## FB/SIMONE6 (SC1162-6) CHANDELIER

A CIRCULAR EARTHEN BASE  
SPRINGS GILDED BLOSSOMS ON  
THIS SIX-ARM CHANDELIER WITH  
CANDLE-LIKE FEATURES

H:762MM W:686MM D:686MM  
CHAIN: 1829MM  
6 X E14 60W  
© 2008 ELAINE GLEASON



## FB/SIMONE2 (SC1148-2) SCONCE

THE GRAY BODY OF THIS  
TWO-ARM WALL SCONCE IS  
ACCENTED BY A GOLD  
SCULPTED BLOSSOM ELEMENT,  
GILDED LEAVES, AND  
CANDLE-LIKE FIXTURES

H:914MM W:432MM D:229MM  
2 X E14 60W  
© 2008 ELAINE GLEASON



## FB/AUDUBON1 (SC1015-1) SCONCE

BLACK AND TAN STRIPED  
SHADE TOPS GOLD ANEMONE  
SCULPTED ELEMENT AND  
SILVER BALL ON THIS WALL  
SCONCE WITH A METAL STAR-  
SHAPED WALL PLATE

H:533MM W:254MM D:229MM  
1 X E27 60W  
© 2008 PAUL GRÜER



## FB/AUDUBON4 (CH1015) CHANDELIER

FOUR-BRANCH CHANDELIER  
WITH GOLD LEAF ANEMONES  
AND WIRY COPPER TWIG-  
LIKE FLOURISHES SPIKED  
WITH SILVER GILDED LEAVES  
GROUNDED IN AN INVERTED  
PYRAMID BASE. CYLINDRICAL  
SHADES. BLACK AND GOLD  
WASHED STRIPES

H:914MM W:991MM D:991MM  
CHAIN: 1829MM  
4 X E27 60W  
© 2001 PAUL GRÜER







## FB/ANEMONE/P (PD1006) MINI PENDANT

THE TAUPE AND CREAM STRIPED GLAZE CYLINDRICAL SHADE IS SPIKED WITH A SILVER LEAF SCULPTED BLOSSOM ELEMENT AND GOLD BALL FINIAL ACRYLIC DIFFUSER

HAND PAINTED METAL SHADE  
H:203MM W:152MM D:152MM  
1 X E27 100W  
SUPPLIED WITH 305MM  
(2) & 152MM (2) STEMS FOR  
ADJUSTABLE HEIGHT  
© 2009 PAUL GRÜER



## FB/ANEMONE/FL (FL1006) FLOOR LAMP

STAR SHAPED BASE WITH GOLD LEAF, PUTTY AND CREAM STRIPED METAL STEM SPIKED WITH A GOLD LEAF BLOSSOM. INVERTED CONE SHADE WITH PUTTY AND CREME STRIPED GLAZE MEDIUM AND GOLD LEAF BALL-SHAPED FINIAL

H:1854MM W:381MM D:381MM  
1 X E27 100W  
© 2001 PAUL GRÜER



## FB/ANEMONE/TL (TA1006) TABLE LAMP

STAR-SHAPED BASE WITH GOLD LEAF, TAUPE AND CREAM STRIPED METAL STEM SPIKED WITH A GOLD LEAFED SCULPTED BLOSSOM ACCENT THIS TABLE LAMP. SHADE IS INVERTED REPEATING THE TAUPE AND CREAM STRIPED GLAZE MEDIUM, GOLD LEAF BALL-SHAPED FINIAL

H:737MM W:254MM D:254MM  
1 X E27 100W  
© 2001 PAUL GRÜER





## FB/LA FLEUR/FL (FL1009) FLOOR LAMP

GOLD LEAF SQUARES SIMULATE A NEW ORLEANS SIDEWALK TO FORM THE DECORATIVE PLATE BASE. GOLD LEAF BLOSSOM BURSTS FROM BLACK AND PUTTY STRIPED STEM. BLACK AND PUTTY STRIPED SHADE, TOPPED WITH GOLD LEAF BALL FINIAL.

H: 1852MM W: 229MM D: 229MM  
1 X E27 100W  
© 2001 PAUL GRÜER



## FB/ZEUS BLK/BONE (MR 1002) BLACK AND BONE MIRROR

A FLAME FINIAL CROWNS THIS TRIANGULAR MIRROR, GROUNDED WITH BALL FINIALS. THE FRAME IS FINISHED IN A BLACK AND BONE COLOUR WASH, THEN TRIMMED IN GOLD LEAF.

H: 810MM W: 560MM  
© 2002 PAUL GRÜER



## FB/LA FLEUR1 (SC1009-1) SCONCE

THE GOLD AND SILVER BLOSSOM BOBECHE  
ON THIS WALL SCONCE IS TOPPED WITH  
TAUPE AND CREAM STRIPED SHADE AND  
FEATURES A STAR-SHAPED WALL PLATE.

H: 635MM W: 203MM D: 279MM  
1 X E27 60W  
© 2008 PAUL GRÜER



## FB/ZEUS PUTTY/CR (MR 1003) PUTTY AND CREAM MIRROR

A FLAME FINIAL CROWNS THIS TRIANGULAR  
MIRROR, GROUNDED WITH BALL FINIALS.  
THE FRAME IS FINISHED IN A PUTTY AND  
CREAM COLOUR WASH, THEN TRIMMED  
IN GOLD LEAF.

H: 810MM W: 560MM  
© 2002 PAUL GRÜER





**FB/SOUTHBEACH/FL**  
(FL1019) FLOOR LAMP

GOLD LEAF AND A BLACK STRIPED STEM SUPPORTED BY STAR SHAPED BASE ETCHED TO RESEMBLE COBBLESTONE STREETS, WITH GOLD LEAF BLOSSOM AND FINIAL. PAINTED BLACK AND PUTTY STRIPES OUTLINE THE SHADE.

H: 1727MM W: 356MM  
D: 356MM  
1 x E27 100W  
© 2002 PAUL GRÜER

**FB/SOUTHBEACH/P**  
(PD1019) PENDANT

THE INVERTED SHADE OF THIS CHARMING PENDANT FEATURES BLACK AND CREAM STRIPES AND IS DETAILED WITH A SCULPTED FINIAL. ACRYLIC DIFFUSER.

H: 229MM W: 381MM D: 381MM  
1 x E27 100W  
HAND PAINTED METAL SHADE  
2 x 305MM + 2 x 152MM STEMS FOR  
ADJUSTABLE HEIGHT  
© 2009 PAUL GRÜER





**FB/NETTLE/TL**  
(TA1024) TABLE LAMP

CONSOLE LAMP FEATURING A GOLD LEAF SCULPTED BASE AND METAL STEM WITH SCULPTED BLOSSOM ELEMENT; CYLINDRICAL CREAM SHADE IN PUTTY WASH TOPPED WITH GILDED BLOSSOM FINIAL.

H: 1016MM W: 165MM D: 165MM  
1 x E27 100W  
© 2001 PAUL GRÜER



**FB/NETTLE-G/FL**  
(FL1024-G) FLOOR LAMP

JAGGED STAR SHAPED BASE ETCHED IN GOLD/SILVER LEAF TO RESEMBLE COBBLESTONE STREETS INDIGENOUS TO NEW ORLEANS. TOPPED WITH GOLD/SILVER LEAF SCULPTED FINIALS ABOVE STRIPED METAL SHADES.

H: 1959MM W: 464MM  
D: 464MM  
1 x E27 100W  
© 2008 PAUL GRÜER



**FB/NETTLE-S/FL**  
(FL1024-S) FLOOR LAMP  
SILVER



## FB/NETTLELX-S/FL (FL1048-S) FLOOR LAMP

JAGGED STAR SHAPED BASE ETCHED  
IN GOLD LEAF TO RESEMBLE  
COBBLESTONE STREETS. GOLD LEAF  
DECORATIVE STEM FINIALS, BEIGE  
AND SILVER LEAF STRIPED SHADES.

H: 1981MM W: 635MM D: 356MM  
2 x E27 60W  
© 2002 PAUL GRÜER



## FB/NETTLELX-G/FL (FL1048-G) FLOOR LAMP

JAGGED STAR SHAPED BASE ETCHED IN GOLD  
LEAF TO RESEMBLE COBBLESTONE STREETS.  
GOLD LEAF DECORATIVE STEM FINIALS,  
GOLD AND TAUPE STRIPED SHADES.

H: 1981MM W: 635MM D: 356MM  
2 x E27 60W  
© 2002 PAUL GRÜER





## FB/NETTLELUX S/TL

(TA1030-S) TABLE LAMP

SILVER AND CREAM STRIPED  
SHADES AND SPIKED NETTLE  
FINIAL TOP THIS DISTINCTIVE  
TWO-ARM TABLE LAMP.

H: 1016MM W: 508MM  
D: 279MM  
SHADES: 178MM X 381MM  
2 X E27 60W  
© 2002 PAUL GRÜER



## FB/NETTLELUXG/TL (TA1030) TABLE LAMP

GOLD LEAF AND TAUPE STRIPED SHADES  
AND SPIKED NETTLE FINIAL TOP THIS  
DISTINCTIVE TWO-ARM TABLE LAMP.

H: 1016MM W: 508MM D: 279MM  
SHADES: 178MM X 381MM  
2 X E27 60W  
© 2002 PAUL GRÜER



## FB/FRAGMENT-S/PS (PD1052-S) SILVER PENDANT

DECORATIVE SILHOUETTE OF A FRAGMENTED  
HEAD FINIAL ATOP A CYLINDRICAL SHADE.  
ACRYLIC DIFFUSER.

H: 362MM W: 203MM D: 203MM  
HAND LEAFED & GLAZED SILVER METAL SHADE  
1 X E27 100W  
2 X 305MM + 2 X 152MM STEMS FOR  
ADJUSTABLE HEIGHT  
© 2009 PAUL GRÜER



## FB/FRAGMENT-G/PS (PD1052G-S) GOLD PENDANT

DECORATIVE SILHOUETTE OF A FRAGMENTED  
HEAD FINIAL ATOP A CYLINDRICAL SHADE.  
ACRYLIC DIFFUSER.

H: 362MM W: 203MM D: 203MM  
HAND LEAFED & GLAZED  
GOLD METAL SHADE  
1 X E27 100W  
2 X 305MM + 2 X 152MM STEMS FOR  
ADJUSTABLE HEIGHT  
© 2009 PAUL GRÜER





## FB/FRAGMENT-G/PL (PD1052G-D) GOLD PENDANT

DECORATIVE COLUMN FRAGMENT  
FINIAL ATOP A CYLINDRICAL DRUM  
SHADE ACRYLIC DIFFUSER.

H: 229MM W: 381MM D: 381MM  
HAND LEAFED & GLAZED GOLD  
METAL SHADE  
1 X E27 100W  
2 X 305MM + 2 X 152MM STEMS  
FOR ADJUSTABLE HEIGHT  
© 2009 PAUL GRÜER



## FB/FRAGMENT-S/PL (PD1052-D) SILVER PENDANT

DECORATIVE COLUMN FRAGMENT  
FINIAL ATOP A CYLINDRICAL  
DRUM SHADE. ACRYLIC DIFFUSER.

H: 229MM W: 381MM D: 381MM  
HAND LEAFED & GLAZED SILVER  
METAL SHADE  
1 X E27 100W  
2 X 305MM + 2 X 152MM STEMS  
FOR ADJUSTABLE HEIGHT  
© 2009 PAUL GRÜER







## FB/FRAGMENT-G1 (SC1052) GOLD SCONCE

BURNISHED GOLD LEAF WALL SCONCE FEATURES SCULPTED DECORATIVE ELEMENTS OF SILHOUETTES OF TORSO, HEAD AND COLUMN FRAGMENTS AND A GOLD CYLINDRICAL SHADE.

H: 965MM W: 152MM D: 229MM  
1 x E27 60W  
© 2003 PAUL GRÜER

## FB/FRAGMENT/FL-G (FL1013-G) FLOOR LAMP

GOLD LEAF WITH UMBER GLAZE SETS OFF A DRUM SHADE, STEPPED BASE AND STEM STUDDED SILHOUETTES OF A TORSO, CROSS AND FACE CAST FROM ORIGINAL PIECES OF ANCIENT STONWORK FRAGMENTS.

H: 1702MM W: 381MM D: 381MM  
1 x E27 100W  
© 2001 PAUL GRÜER





## FB/FRAGMENT-S1 (SC1052) SILVER SCONCE

BURNISHED SILVER LEAF WALL  
SCONCE FEATURES SCULPTED  
DECORATIVE ELEMENTS OF  
SILHOUETTES OF TORSO, HEAD  
AND COLUMN FRAGMENTS AND  
A SILVER CYLINDRICAL SHADE.

H: 965MM W: 152MM D: 229MM  
1 x E27 60W  
© 2003 PAUL GRÜER



## FB/FRAGMENT/FL-S (FL1013-S) FLOOR LAMP

SILVER LEAF WITH UMBER GLAZE SETS  
OFF A DRUM SHADE, STEPPED BASE  
AND STEM STUDDED SILHOUETTES  
OF A TORSO, CROSS AND FACE CAST  
FROM ORIGINAL PIECES OF ANCIENT  
STONWORK FRAGMENTS.

H: 1702MM W: 381MM D: 381MM  
1 x E27 100W  
© 2001 PAUL GRÜER



## FB/FRAGMENT-TL-S (TA1013-S) TABLE LAMP

SILVER LAMP FEATURES MOULDED SILHOUETTES OF A TORSO, CROSS AND FACE CAST FROM ORIGINAL PIECES OF ANCIENT STONEWORK.

H: 1016MM W: 229MM D: 229MM  
1 X E27 60W  
© 2001 PAUL GRÜER



## FB/FRAGMENT-TL-G (TA1013-G) TABLE LAMP

GOLD-LEAF LAMP FEATURES MOULDED SILHOUETTES OF A TORSO, CROSS AND FACE CAST FROM ORIGINAL PIECES OF ANCIENT STONEWORK FRAGMENTS.

H: 1016MM W: 229MM D: 229MM  
1 X E27 60W  
© 2001 PAUL GRÜER



“ One of my favourite things to do is search the French Market in the Quarter to find unique treasures, fragments from the past. Some of these treasures have found a home in the ‘Fragment’ Collection. A touch of the old worked into new designs that bring a bit of history and New Orleans charm to any interior design. ”

*Paul Grüber*





## FB/CARYATID-S (TA1017-S) TABLE LAMP

STACKED BASE ON SWIRL FEET, WITH  
A SCULPTED SILVER LEAF METAL STEM  
INFLUENCED BY 18TH CENTURY  
CARYATID ELEMENT. UMBER GLAZE  
ADDS RICHNESS TO THE SILVER SHADE.

H: 711MM W: 229MM D: 229MM  
1 X E27 60W  
© 2001 PAUL GRÜER



## FB/CARYATID-G (TA1017) TABLE LAMP

STACKED BASE ON SWIRL FEET,  
WITH A SCULPTED GOLD LEAF  
METAL STEM INFLUENCED BY 18TH  
CENTURY CARYATID ELEMENT.  
UMBER GLAZE ADDS RICHNESS TO  
THE GOLD LEAF SHADE.

H: 711MM W: 229MM D: 229MM  
1 X E27 60W  
© 2001 PAUL GRÜER



**FB/RODRIGUE/TL**  
(TA1134) TABLE LAMP

SMALL, BELL SHAPED TABLE LAMP IS TOPPED BY A GOLD FLEUR DE LIS AND A BLACK SHADE WITH GOLD SPATTER ACCENTS

H:610MM W:305MM D:305MM  
1 X E27 60W  
© 2008 BENJAMIN BURTS

**FB/TECHE/TL**  
(TA1131) TABLE LAMP

DISTRESSED GOLD TABLE LAMP TOPPED BY A SCULPTED FLEUR DE LIS. BLACK SHADE ACCENTED WITH GOLD SPATTER AND GOLD STRIPED BORDER

H:914MM W:406MM D:406MM  
1 X E27 100W  
© 2008 BENJAMIN BURTS



**FB/FLEUR DE LIS**  
(TA1130) TABLE LAMP

PETITE TABLE LAMP WITH GOLD AND SILVER BODY. SCULPTED FLEUR DE LIS SITS ATOP A SILVER BALL AND GOLD BASE. BLACK SHADE WITH GOLD SPATTER ACCENTS

H:559MM W:305MM D:305MM  
1 X E27 60W  
© 2008 BENJAMIN BURTS





**FB/BIENVILLE-M/T**  
(TA1126M) TABLE LAMP

ANTIQUED MUSTARD AND GOLD  
ADORN THE BASE, TOPPED WITH  
A LIGHT TAN OVERSIZED SHADE.

H: 762MM W: 457MM D: 457MM  
1 x E27 100W  
© 2007 BENJAMIN BURTS



**FB/BIENVILLE/TL**  
(TA1126) TABLE LAMP

FEATURING A GOLD AND SILVER  
BODY TOPPED BY AN OVERSIZED  
CYLINDRICAL GILDED SHADE.

H: 762MM W: 457MM D: 457MM  
1 x E27 100W  
© 2007 BENJAMIN BURTS





## FB/POMPADOUR/TL (TA1002) TABLE LAMP

MOULDED DUCK FEET SUPPORT THE GOLD LEAF BASE WITH ACID ETCHING WITH A STRIPED SHADE AND A POMPADOUR-INSPIRED ELEMENT ATOP THE STEM.

H: 1016MM W: 229MM  
D: 229MM  
1 x E27 100W  
© 2001 PAUL GRÜER



## FB/LA FLEURETTE (TA1077) TABLE LAMP

STAR SHAPED BASE WITH GOLD LEAF, CREAM AND TAN METAL STEM TOPPED WITH A SCULPTED ROSETTE AND SPHERE COMBINED. FINISHED WITH AN ANTIQUED TAN SHADE DECORATED WITH FLORAL APPLIQUÉS AND MATCHING FINIAL.

H: 546MM W: 229MM  
D: 229MM  
1 x E27 60W  
© 2004 PAUL GRÜER



## FB/BIRDLAND/TL (TA1057) TABLE LAMP

CRACKLED PUTTY FINISH, GOLD LEAF, AND CREAM STRIPES DETAIL THE SHADE ABOVE A MELANGE OF NARROWING STRIPED STEMS IN A WASHED FINISH. ADORNED WITH CRYSTAL ACCENTS ON A TWO-TIER STAR-SHAPED BASE.

H: 1143MM W: 229MM  
D: 229MM  
1 x E27 60W  
© 2001 PAUL GRÜER





## FB/DUMAINE1 (SC1046) SCONCE

THE GOLD LEAF DECORATIVE ELEMENT ON THIS WALL SCONCE COMPLETES METAL STEM AND SHIELD-SHAPED WALL PLATE WITH TAUPE UMBER WASH. ALSO FEATURES A CYLINDRICAL CREAM COLOURED FABRIC SHADE AND GOLD LEAF FLAME FINIAL.

H: 737MM W: 152MM D: 203MM  
1 X E27 60W  
© 2002 PAUL GRÜER

## FB/PALM LUXE1 (SC1140-1) SCONCE

THE GRACEFUL CURVED ARM SUPPORTS A CANDLE-LIKE FIXTURE DETAILED WITH SILVER AND WHITE STRIPES. ACCENTED WITH A SCULPTED BOBECHE, AND A CIRCULAR SCULPTED WALL PLATE.

H: 813MM W: 178MM  
D: 254MM  
1 X E14 60W  
© 2008 PAUL GRÜER



## FB/FLAMBEAU2 (SC1027-2) SCONCE

A BLACK AND CREAM STRIPED MOULDED STEM TOPPED WITH A SCULPTED DECORATIVE BLOSSOM AND A TWISTED BRASS FINIAL. CREAM ARMS HOLD TWO CANDLE-LIKE STEMS AND GOLD LEAFED SHIELD SHADES.

H: 584MM W: 406MM D: 254MM  
2 X E14 60W  
© 2011 PAUL GRÜER





**FB/ARMORYTABLE**  
(CON 1050) DEMI-LUNE CONSOLE TABLE

GOLD LEAF AND GLAZED DEMI-LUNE TABLE TOP WITH SILVER AND GOLD LEAF SCULPTED DECORATIVE FACE FRAGMENTS ON LEGS, GILDED SWIRL FEET.

H: 870MM W: 890MM D: 380MM  
© 2003 PAUL GRÜER



**FB/VENETIANTABLE**  
(ST 1060) ROUND LAMP TABLE

A DISTRESSED GOLD LEAFED BASE FORMS THE FOUNDATION OF THE SLITHERING STEM PUNCTUATED WITH DISTRESSED BALL-SHAPED ELEMENTS AND FESTOONED WITH A FEAST OF CUT GLASS CRYSTALS.

H: 610MM D: 410MM  
© 2012 PAUL GRÜER

**FB/ROCHEBLAVE B**  
(SI 1149) DECORATIVE BOWL

ANTIQUED GOLD LEAF BOWL WITH DETACHABLE GOLD LEAF PEDESTAL BASE.

H: 190MM D: 370MM  
© 2012 BENJAMIN BURTS



**FB/ISABELLA BOWL**  
(SI 1148) DECORATIVE BOWL

ANTIQUED GOLD AND SILVER LEAF BOWL ON GOLD LEAF SCROLLED FEET.

H: 170MM D: 320MM  
© 2012 BENJAMIN BURTS

