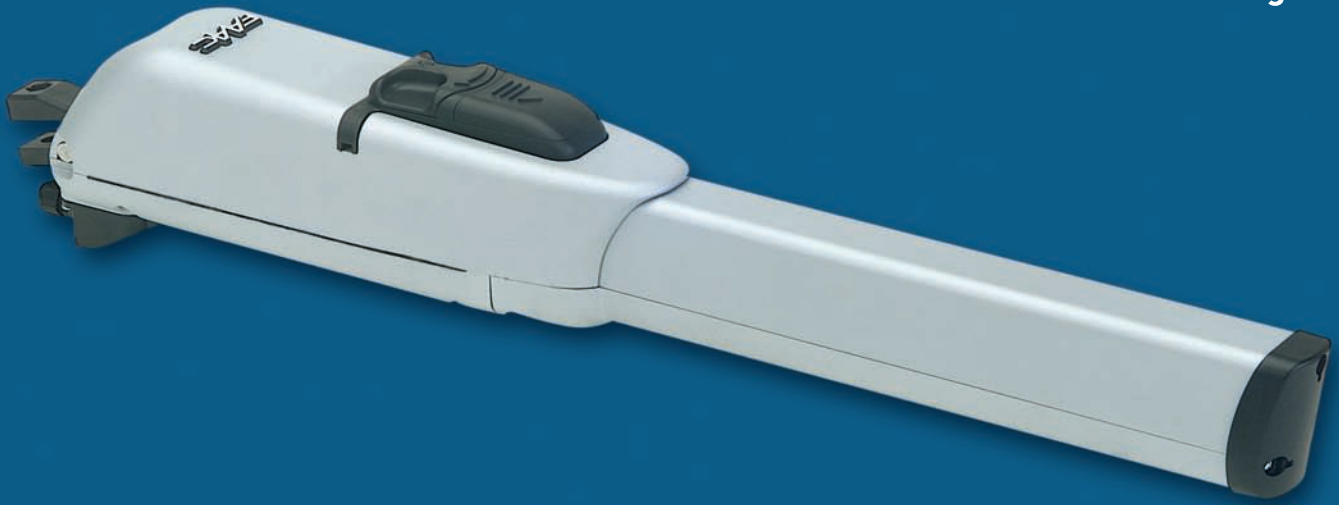


Electro-mechanical Operators For Swing Gates



413 Range

The **413 Swing Gate Operator** is designed to efficiently move gates with leaves up to 2.5m in length - available in 230 volt and 24 volt versions.



Reliable. Affordable. Dependable.

FAAC ... Leading the way.



Excellence in Automation

413 Range



Manual Release mechanism

The 413 range has 4 Models::

- 413
- 413 with Limit Switch
- 413 24V
- 413 24V with Limit Switch

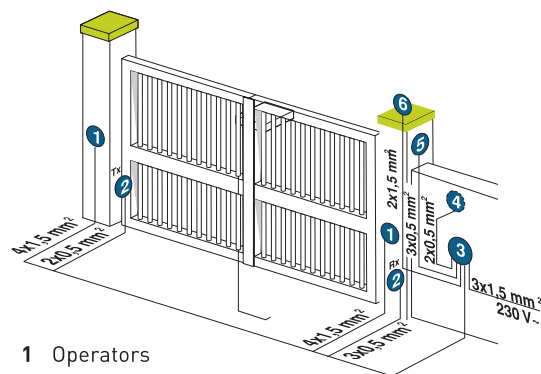
These energy-efficient motors are highly adjustable to allow maximum flexibility in installation dimensions.

With several versions to choose from the majority of installation requirements can be met. The LS versions are equipped with opening and closing limit switches to ensure the gate opens and closes fully whatever the weather. All versions are supplied with in-built opening and closing mechanical stops.

The non-reversing system ensures the gate is mechanically locked when the motor is not running. A convenient and secure release system with customised key makes it possible to manually move the gate in event of power failure.

The 413 range is the latest generation of swing gate motors from FAAC (UK) Ltd.

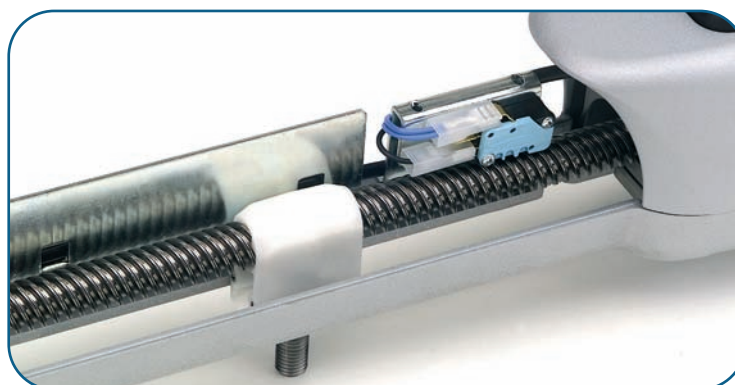
Known for the extensive range of high quality products and innovative manufacturing techniques, FAAC continue to engineer reliable, versatile, leading-edge automation systems, chosen for residential and commercial installations on a worldwide basis. Providing high quality automation systems for gates, barriers, doors, parking and access control products, FAAC is the leading brand in the automation market.



- 1 Operators
- 2 Photocells
- 3 Control board
- 4 Key push button
- 5 Receiver
- 6 Flashing lamp

413 Range Technical Specifications

	413	413 LS	413-24V	413 LS-24V
Power supply:	230 Vac		230Vac (24v motor)	
Power:	250 W		70 W	
Current:	1,1 A		3 A	
Thermal Protection:	140°C		-	
Capacitor:	6.3uF		-	
Thrust:	200daN		250daN	
Travel:	300 mm (350 mm without mechanical stop)			
Rod speed:	1,6 cm/sec			
Leaf max width:	2,5 m			
Use frequency at 20°C:	30%	30%	100%	
Approximate min. cycle/hour at 20°C:	25		75	
Operating ambient temperature:	-20° C - +55° C			
Operator weight:	6.5 Kg			
Operator dimensions:	785 x 100 x 155 mm (L x W x H)			
Protection class:	IP 44			



Cut out showing Limit Switch

