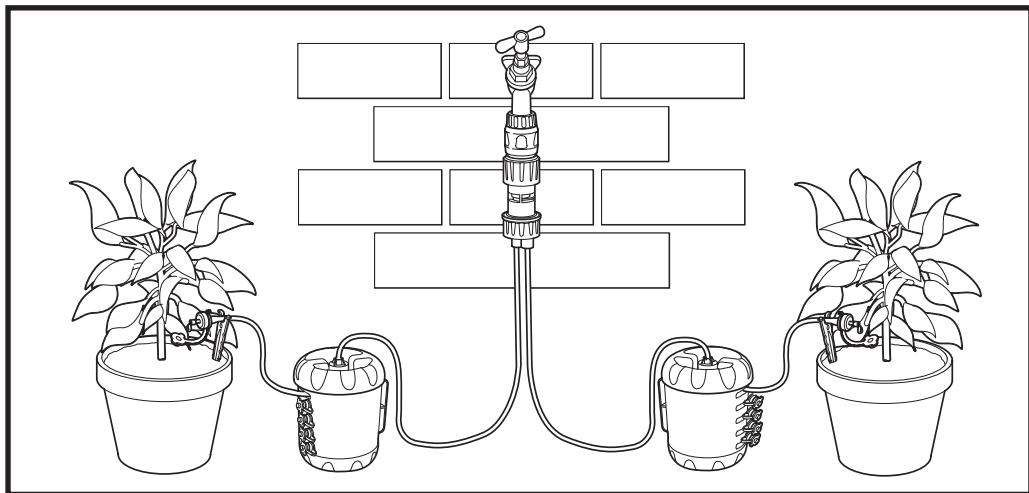


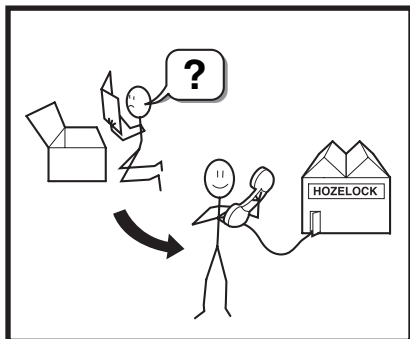
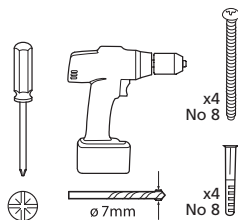
AQUAPOD 10



Required	Necessário
Nécessaire	Wymagane
Erforderlich	Υποχρεωτικό
Vereist	Gerekli
Necesario	Szükséges
Krävd	Vyžaduje se
Nødvendig	Обязательные
Vaadittava	компоненты
Påkrævet	Vajalik
Richiesto	Nepieciešamais

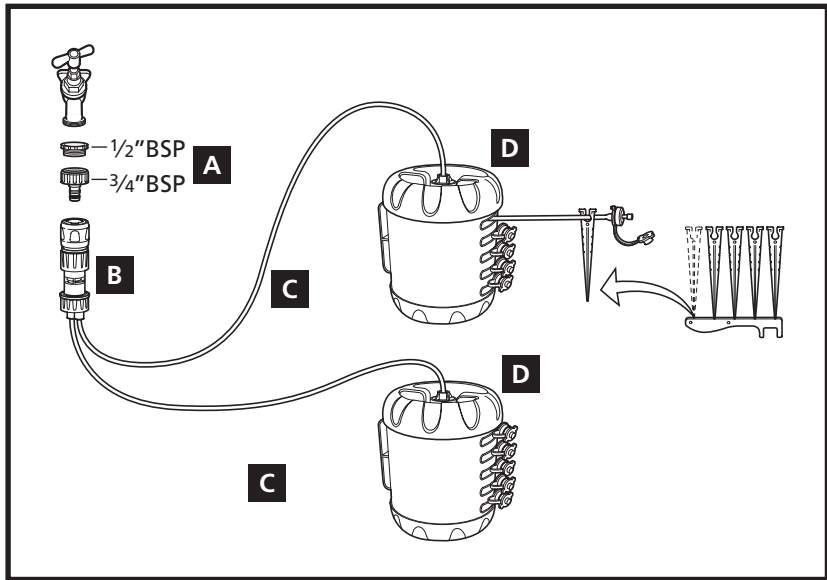
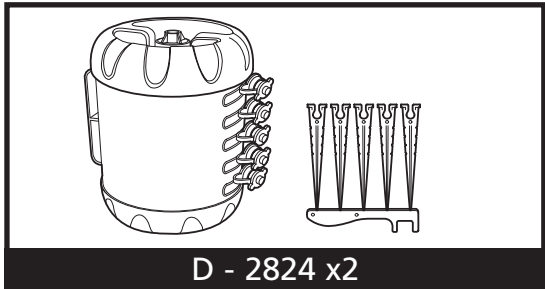
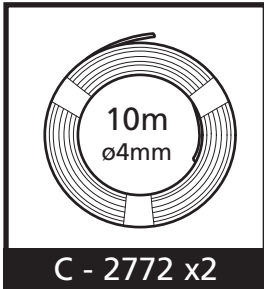
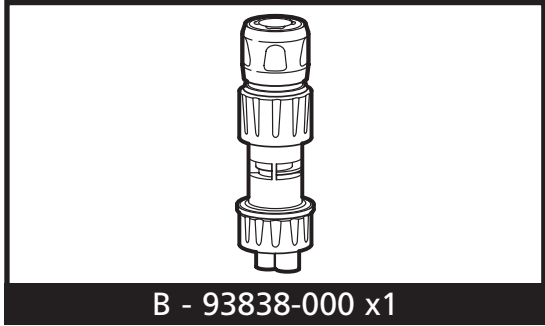
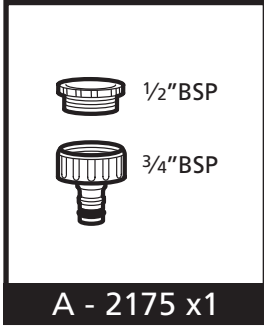


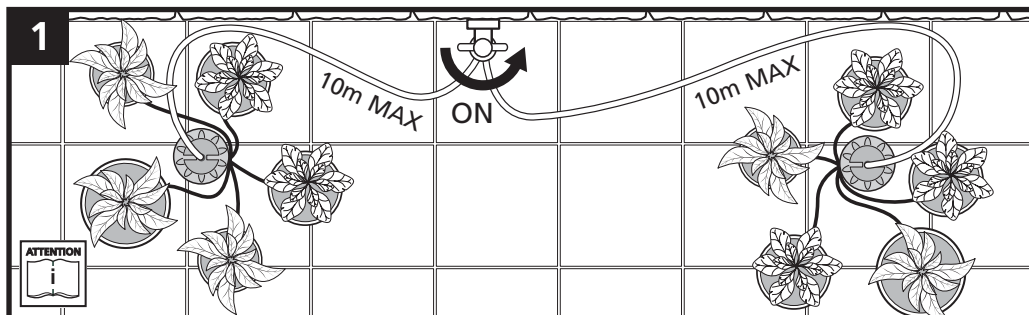
Optional	Facultativo
Optionnel	Opcjonalne
Optional	Προαιρετικό
Optioneel	İsteğe bağlı
Opcional	Opcionális
Tillval	Voliteľné
Ekstraustyr	Дополнительные
Valinnainen	компоненты
Valgfri	Vaiikuline
Opzionale	Izvēles piederumi



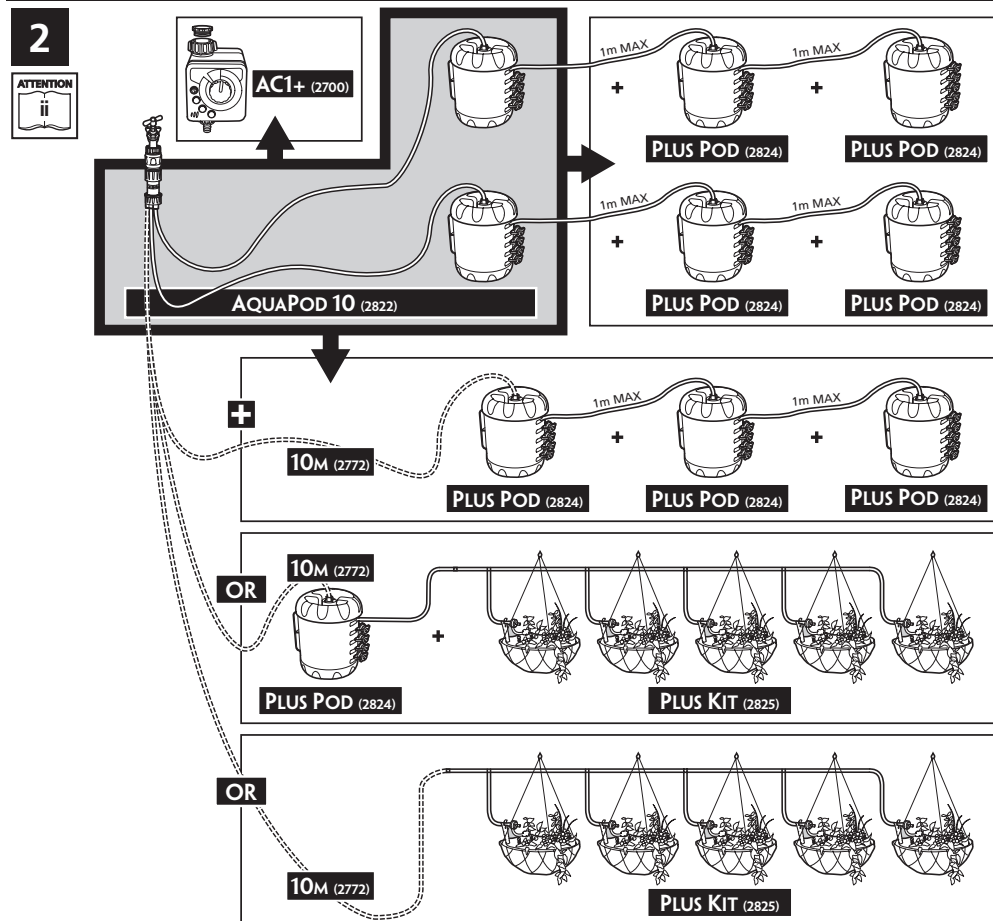
HOZELOCK

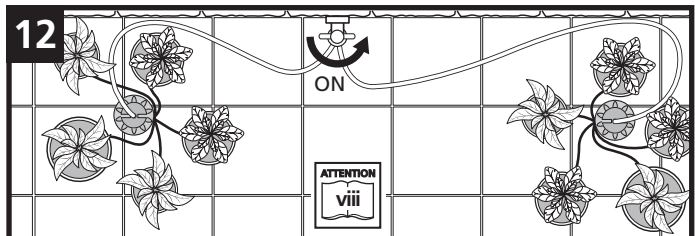
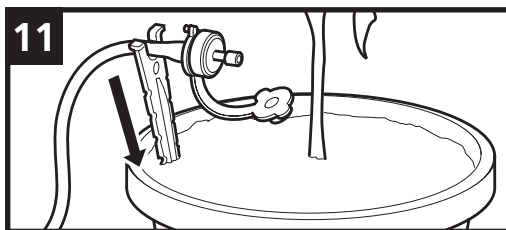
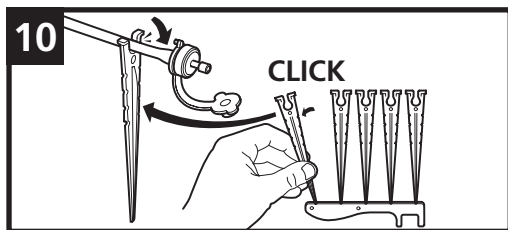
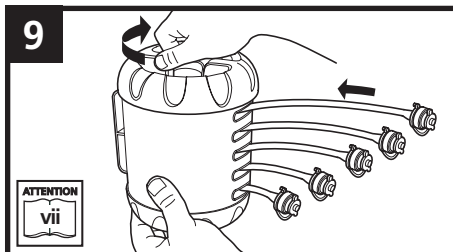
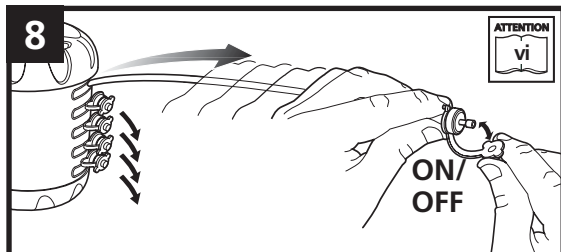
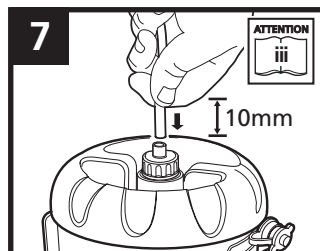
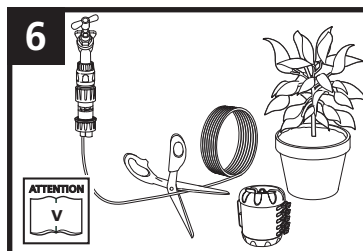
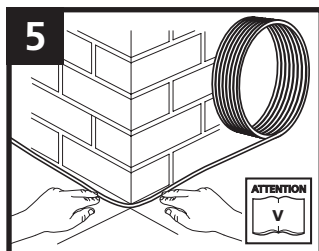
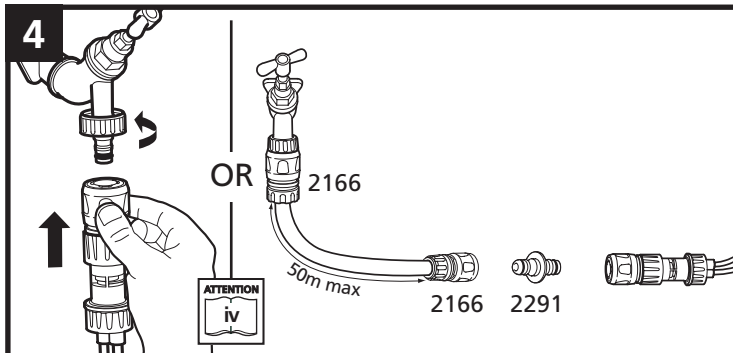
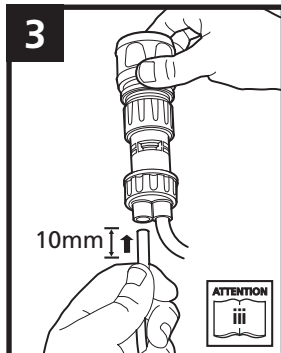
Hozelock Ltd.
 Midpoint Park,
 Birmingham B76 1AB. England
 Tel: +44 (0) 870 850 1959
 info@hozelock.com
 www.hozelock.com
 33594-000



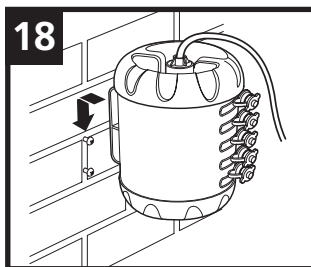
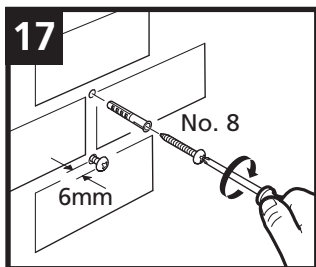
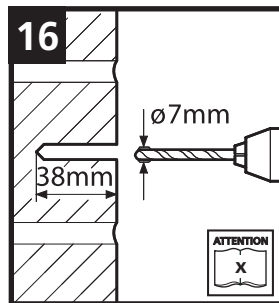
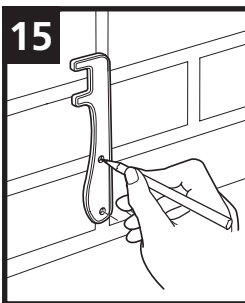
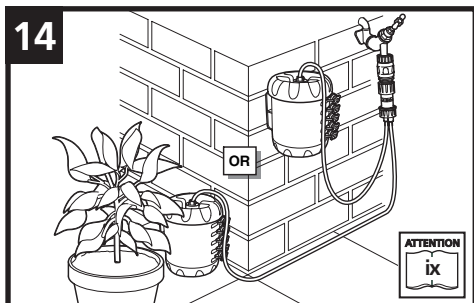


Extension kits • Kits d'extension • Erweiterungssets • Uitbreidingssets • Kits de extensión
 Utbyggnadssatser • Forlængelsesett • Jatkosarjat • Forlængelseskits • Kit prolunghe • Kits de extensã
 Zestawy przedłużające • Kit επέκτασης • Uzatma Kitleri • Bóvítő készletek • Prodlužovací sady
 Комплекты удлинителей • Pikenduskomplektid • Paplašinājuma komplekti

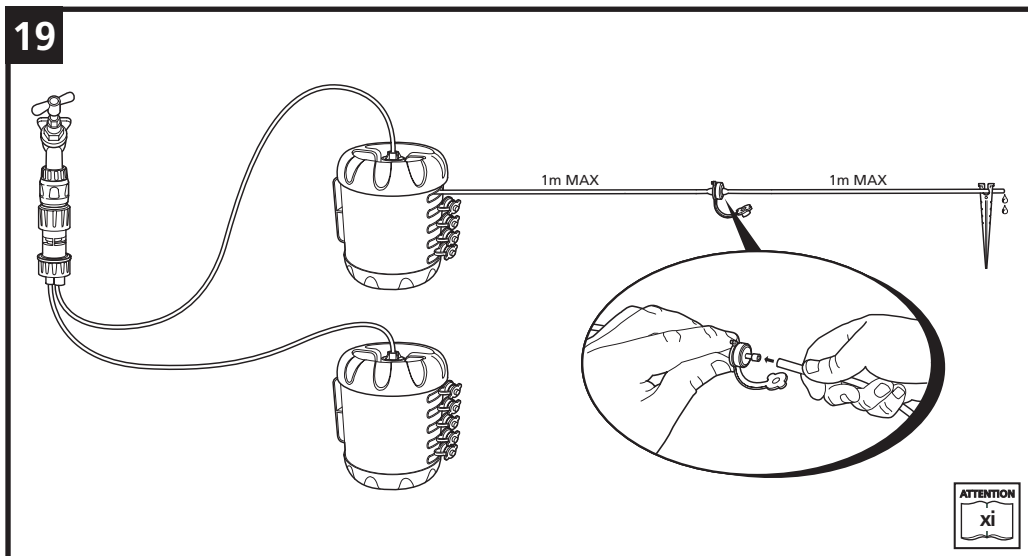


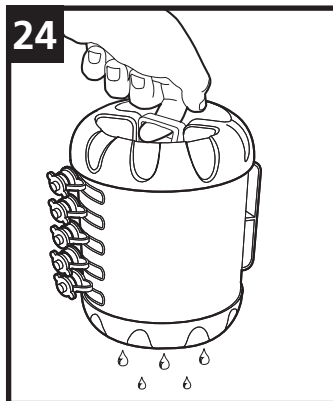
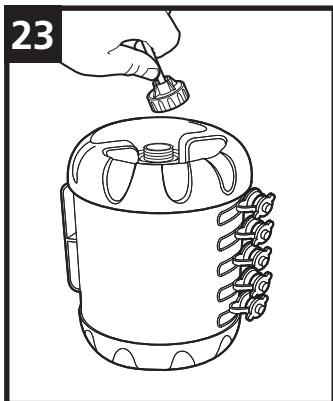
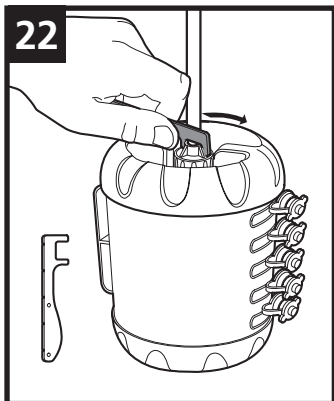
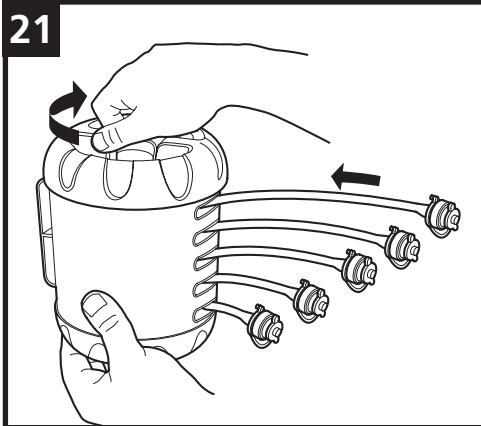
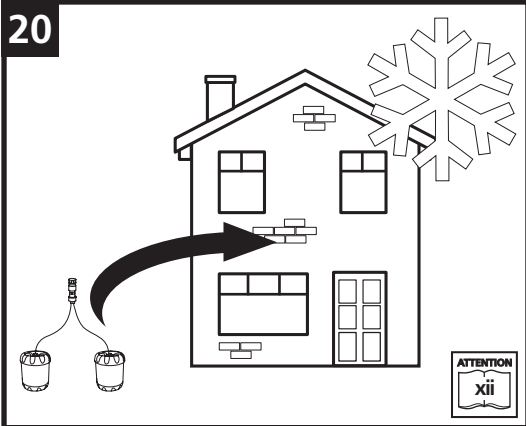


Optional floor & wall mounting • Montage mural & au sol optionnel • Befestigung für Boden und Mauer (optional)
 Optionele wand- en bodemmontage • Instalación opcional en el suelo y la pared • Tillvalen golv & väggmontering
 Valgfri montering på golv og vegg • Valinnainen lattia- ja seinäkiinnitys • Valgfri gulv- & vægmontering
 Montaggio a pavimento e a parete (opzionale) • Montagem de chão e parede facultativa
 Opcjonalne mocowanie na podłodze i na ścianie • Προαιρετική τοποθέτηση στο δάπεδο και τον τοίχο
 isteğe bağlı Yer ve Duvar Montajı • Opcionális szerelés padlóra és falra • Volitelné upevnění na podlahu a stěny
 Дополнительные приспособления для напольного и настенного крепления • Valikuline põranda ja seina kinniti
 Grīdas un sienas montāžas izvēles iespējas



Extending dripper hose • Extension du Tuyau goutteur • Verlängerbarer Tropferschlauch • Druppelslang verlengen
 Como extender una manguera de goteo • Förlängning av droppslang • Forlængelse av dryppslange
 Tippkasteluletkun jatkaminen • Prolungamento del tubo gocciolatore • Mangueira de gotejador de extensão
 Przedłużanie węzła skraplającego • Επεκτάσιμος εύκαμπτος σωλήνας σταλάκτης • Damlatici hortumu uzatma
 A csepegtető tömlő hosszabbítása • Prodĺoužití odkapávací hadičky • Нарращивание капиллярного шланга
 Tilguti vooliku pikendamise • Pilinātāja šļūtenes pagarināšana





- i Each AquaPod is designed to water groups of up to 5 planted containers. The hose between the AquaPod and the tap should be no longer than 10m. One or more drippers can be placed into each container.
- ii AquaPods can be connected to each other, to a maximum of the 3rd generation. Additional AquaPods (2824) or hanging basket kits (2825) can be purchased separately. Up to seven of these additional kits can be combined with this kit.
- iii Push 4mm Micro Hose into fitting (approx. 10mm).
If difficult, dip end of hose into warm water for 10 seconds. Twisting while pushing hose helps insertion.
- iv Use supplied adaptors if required. Tighten to ensure no leaks.
For maximum flexibility, there can be up to 50m of 1/2" hose between the tap and the hose connector. (Use 50m of hose and 2 x 2166 and 1 x 2291 - not supplied).
- v Lay hose around patio to position where AquaPod is required, trim excess & store for future use. Ensure the connection in Fig.6 is not subjected to excess force.
- vi Pull out AquaPod hose to the required length and undo dripper cap. Dripper can also be closed if required.
- vii AquaPod hoses can be independently re-wound by rotating the end cap at the opposite end to inlet hose.
- viii Test hose connections by turning the tap on. Allow all the air to be expelled, this may take a few minutes. Then look for water emerging from drippers.
- ix AquaPod can be positioned: temporarily on floor, or screwed permanently to wall or floor.
- x Use wall plugs and screws (not supplied) to attach to wall or floor.
- xi Dripper hose can be extended up to 1m max., if required use remaining hose from C.
- xii AquaPod must be stored indoors when there is risk of freezing. Rewind hoses, drain AquaPod and store in a frost free environment.

Trouble Shooting Guide	
PROBLEM	SOLUTION
The hose is difficult to fit	Dip end of hose into warm water for 10 seconds
Water is leaking from the pressure regulator or the 4mm inlet to the AquaPod	Ensure hose is inserted by 10mm into fitting, check fitting is screwed up hand tight
The pressure regulator is whistling / buzzing	Turn tap down by 1/2 turn, if still makes noise turn down by another 1/2 turn, if problem persists contact Hozelock customer service
How do I get water to a remote area of my garden?	See diagram 4 - use good quality 1/2" hose to start system up to 50m from the tap
How do I turn the drippers on and off?	Turn off water to make easier, then close cap over dripper outlet
How much water should the plants be given?	Depends upon temperature, weather, plant type and season. Compost 1cm down should be kept moist, but not waterlogged. Always ensure compost is able to drain. As a guide 5 minutes, twice per day is ok in summer for a 30cm pot. Adjust watering duration up and down according to the plants requirements.
My plants have different watering needs, how do I ensure that they all get the correct amount of water?	Put more than 1 dripper into pots containing plants that have higher watering needs.
How can I reduce the amount of tap water I use?	Combine AquaPod with Hozelock Water Store Gels to reduce water waste even further. Combine with the Hozelock water butt pump to use stored water - NB. When used with the water butt pump it is only possible to combine 6 AquaPods (vs. 9 when used with a mains water supply)
One of my drippers is not watering	Contact Hozelock for a replacement
My AquaPod will not rewind	Hose too stiff - bring indoors for 15 mins to allow hose to soften, then rewind (see diagram 9)