



LTSF30RGBW

Smart Floodlight 30w RGBW - Multi Function

IP66 220-240V Bluetooth

Please read these instructions before commencing installation & retain them for future reference.

Important information

It is recommended that floodlights are installed by a qualified electrician ensuring the installation complies to current IEE wiring regulations & local building control.

- These products are designed for connection to a 220-240V mains supply.
- We will not accept responsibility for any claims arising from a poor installation.

Installation Procedure

- Always switch off mains supply before servicing.
- Ensure 220-240V supply voltage.
- Fix the floodlight in a suitable position.
- Floodlights are suitable for external use, but must not be submerged in water.
- Ensure correct wiring connection is made using correct size cables and IP67 or IP68 rated boxes for external use.
- For externally mounted fittings LEDLite recommends electrical connection to an RCD/RCBO protected lighting circuit.

SPECIFICATIONS:

Illumination Angle	90°
Dimming	PWM
Frequency Response	40HZ-18KHZ,
Signal to Noise Ratio(SNR)	>80dBm,P=1W;A-weight
Control Method	Bluetooth APP
Bluetooth Distance	>10m,Straight line distance no obstacles
Working Temperature(°C)	-20° ~ 60°C
Storage Temperature	-40° ~ 70°C
Input Voltage (V)	220-240V / 50-60HZ
Input Power (W)	30W
Efficiency	>82%
Luminous Flux (Lm)	2000lm (White)
CRI	>80
Color Temperature(CCT)	6500lm
Light Decay	<10%, T=25°C; RH=90%; H=20000

DIMENSIONS:



SCAN THE QR CODE to download the APP:



iOS



Android



Android 4.3

or search "Mesh Lamp" on your App Store or Android Market by Mobile Phone.



APP CONNECTION AND MODES

1. Download and install on your iOS device (iPhone, iPad) the application Mesh Lamp from the AppStore. On you Android device, download Mesh Lamp from Google Play Store.



2. Turn on the Bluetooth on your Apple or Android device (see Fig. 1)

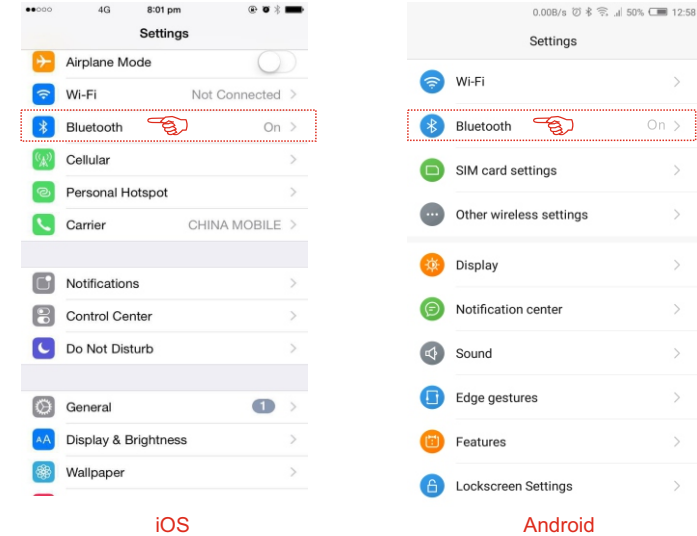


Fig. 1

3. Turn ON the floodlights and Enable Mesh Lamp to be data available - "Allow" app to use data and allow Bluetooth devices to be data available even when you are not using the app (Fig. 2). Run the application - when there are floodlights nearby they will be shown in the home page. Select the light to finish the connection (Fig. 3).

4. Tap the icon of the floodlight to turn it ON or OFF. Please note: when the icon become yellow it means the floodlight is on and if it is gray it means the floodlight is off (Fig. 4). Long press the icon to enter the control interface.

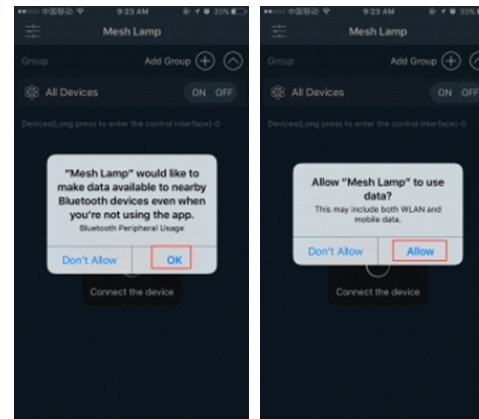


Fig. 2

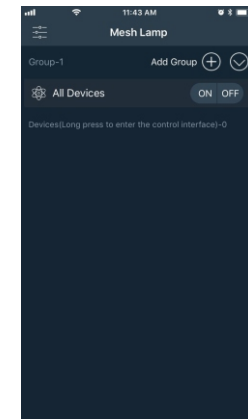


Fig. 3

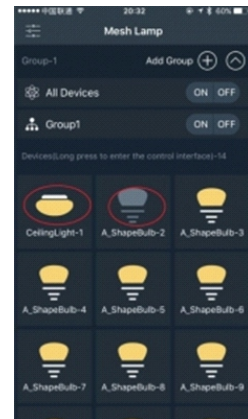


Fig. 4

5. You can group up maximum of 250 lights using the app, by tapping "Add Group". You can create multiple groups to control the floodlights together. Tap the Group name and it will bring out a menu for you to "control, manage and delete" the group. Tap "Manage" button for group name changing and group devices adding(Fig. 5). You can chose to add devices to the group from your current device list.

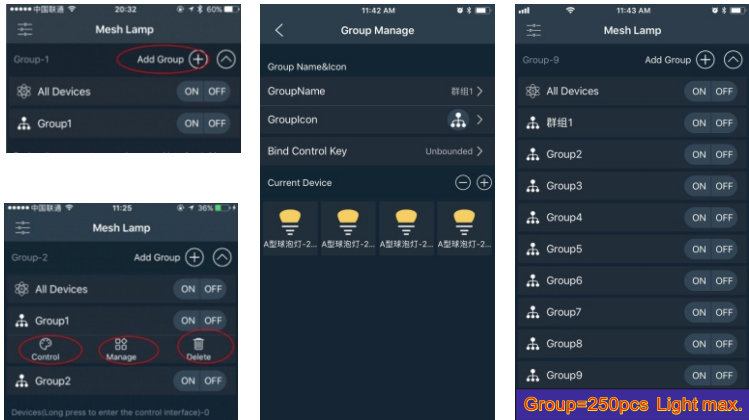


Fig. 5 - Group devices

In order to control the floodlights tap All devices or the group name you want to control and then tap the "Control" icon that appears.

5. **RGB Mode** - Tap the "Control" button to enter Palette RGB mode. You can adjust both the colour RGB (Red, Green, Blue) as well as the brightness of the colour. There are 7 preset colour buttons for easy access to the individual channels.(Fig. 6)

6. **White Lighting Mode** - Tap the "Warm-Cold" button on the lower right corner to enter White Lighting mode. You can turn the white light ON/OFF and control the brightness with the slider between 0% (OFF) and 100%. (Fig. 7) Please note that the floodlights works on 6500K only, so the colour temperature can't be changed.

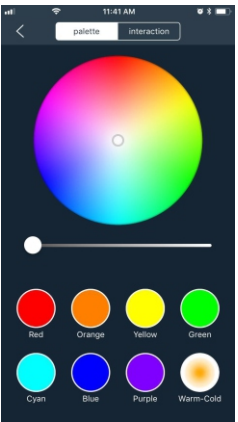


Fig. 6 - RGB Mode

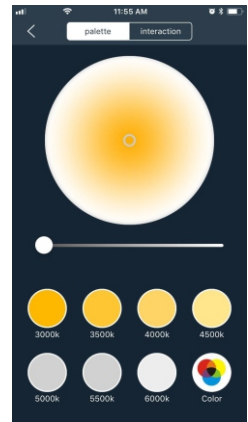


Fig. 7 - White Lighting Mode

7. **Interaction** - Tap the "Interaction" button to enter Scene mode. There are 7 modes available: Breath, Pick Colour, Music, Shake, Pinch Bomb, Baby Love Colour and Timing Mode. (Fig. 8).

Breath (Breathing Mode) - There are 9 available colour modes. You can choose your mode from the screen by tapping the icon. (Fig. 9).

Pick Colour - the floodlights will change colour based on the colour of the object seen through phone's camera.

Music Mode - In this mode the connected floodlight will light in the rhythm of the music playing on the smartphone or tablet. To do this, select your music library on smartphone or tablet and select the desired music. With the pause/play button on the left, you can start or stop the music and the LED light (Fig. 10).

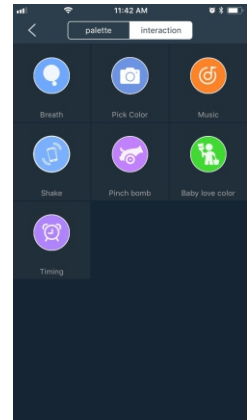


Fig. 8 - Interaction

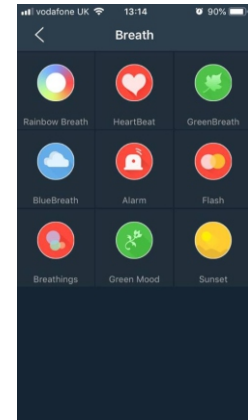


Fig. 9 - Breathing Mode

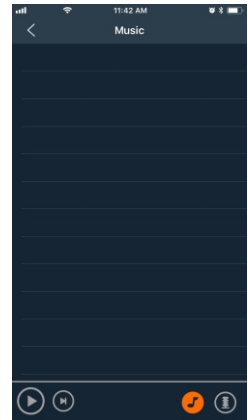


Fig. 10 - Music

Shake - Shake your smartphone to change the floodlight's colour.

Pinch Bomb and Baby Love Color - 2 funny interactive colour games for kids.

8. **Timer** - Tap the "Timing" icon to access the build-in timer function (Fig 11). Press the "+" button on the top right corner to set a specific time to turn the lights ON or OFF. A selection menu will be shown with the time ON/OFF switch. You can select the desired ON or OFF time or you can set the light to work in a time interval. By tapping "Events" you can chose the timer action - turn ON or OFF the floodlights. Choose the days of the week you want the timer to be activated.

After adding successfully, the timer will be shown in your "Timing" list.

Please note: The timer will not operate if the power supply is interrupted.

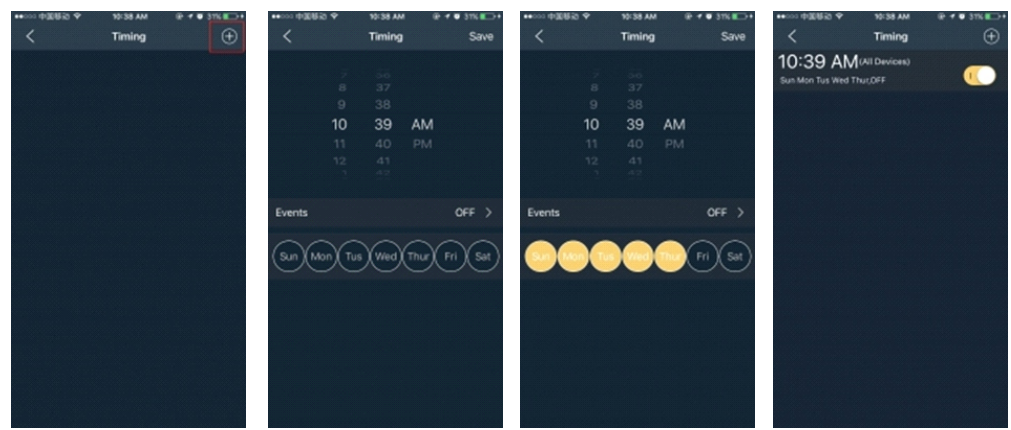


Fig. 11 - Timing Mode