

## 2D Retrofit LED Lamps

CE 220-240V  

**Please read these instructions before use and retain them for future reference.**

### Important information

It is recommended that the 2D lamps are installed by a qualified electrician ensuring the installation complies to current IEE wiring regulations & local building control.

- These products are designed for connection to a 220-240V mains supply.
- We cannot accept responsibility for any claims arising from a poor installation.

### Important User Advice

- Always switch off mains supply before installation.
- The product is not intended to be used with dimmers and emergency fittings.
- This LED 2D lamp is not suitable for direct connection to the mains. Bypassing the original ballast will result in safety and regulation issues.
- The replaced fluorescent lamp should be disposed of in accordance with local regulations.



Lamp is not suitable for dimming.



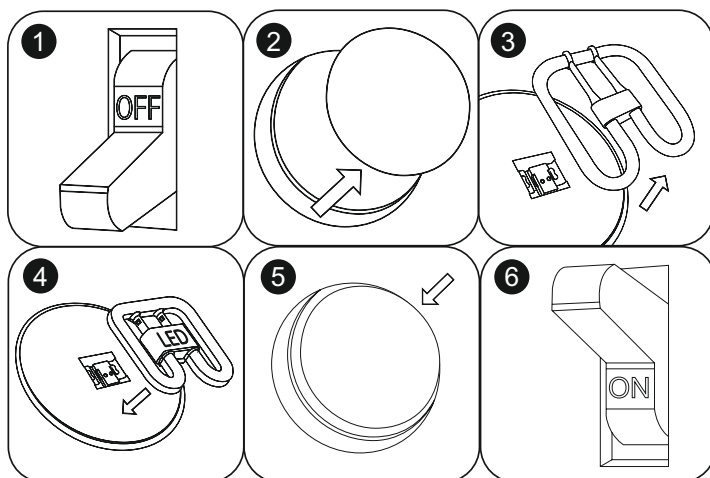
Lamp is not suitable for use in emergency fittings.



Lamp should be used in dry conditions or in a luminaire that provides protection.

### Installation Instructions:

- **LTLED2D16** 7W LED 2D Lamp is a direct retrofit for **16W 2Pin 2D CFL lamps operated on Magnetic ballast**
- **LTLED2D28** 12.5W LED 2D Lamp is a direct retrofit for **28W 4Pin 2D CFL lamps operated on Electronic ballast**



1. Switch off mains supply
2. Open the light fitting
3. Remove the 2D compact fluorescent lamp
4. Insert the LED replacement lamp into lampholder
5. Close the light fitting
6. Switch on electricity to test the lamp

### Dimensions (mm):

