

LEDLITE™ User Instructions

LTEC011



11W ECO LED Wall Light

IP20 

220-240V

Please read these instructions and retain them for future reference.

Important information

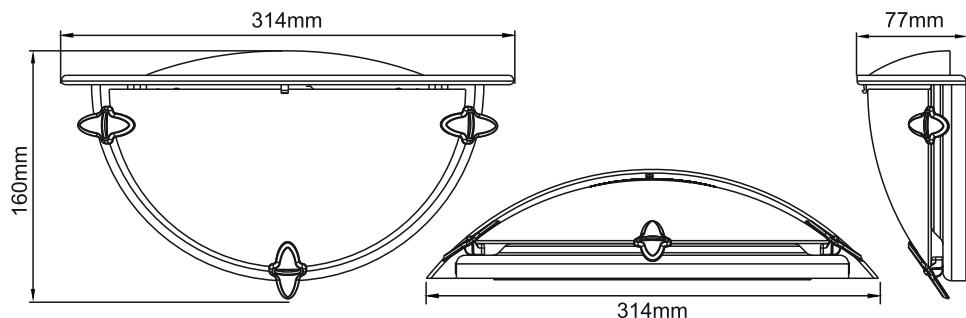
It is recommended that the fittings are installed by a qualified electrician ensuring the installation complies with current IEE wiring regulations & local building control.

- These products are designed for connection to a 220-240V mains supply.
- We cannot accept responsibility for any claims arising from a poor installation.

Important User Advice

- Always switch off mains supply before installation.
- The fitting is suitable for indoor use only.


Dimensions:



Specifications:

- Voltage Range: 220-240VAC
- Nom. Watts: 11w
- Light Output: 680± Lumens
- LED Colour: 3000k
- LED Type: 2835 SMD LED
- CRI > 80
- Beam Angle: 120°
- Opal Glass
- Dimmable with selected dimmers
- Flush Wall Light
- Energy Saving up to 80%

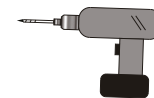
Installation:

 **Warning!** Switch off the power source before installation & maintenance

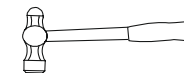
Tools required:



Pencil



Electric drill



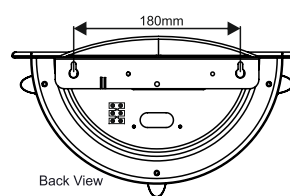
Hammer



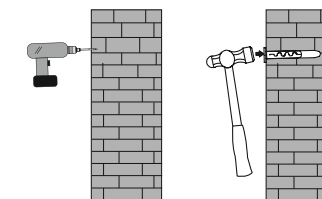
Screwdriver

Step 1: Identify the location and direction of any hidden supply cables or service pipes before drilling fixing holes.

Step 2: Mark the position of the fixing holes onto the wall surface adjacent to the supply wiring (Fig.1).



(Fig.1)

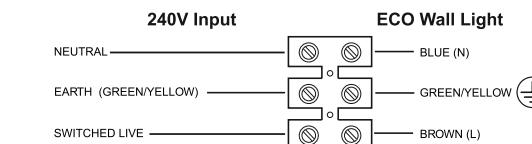
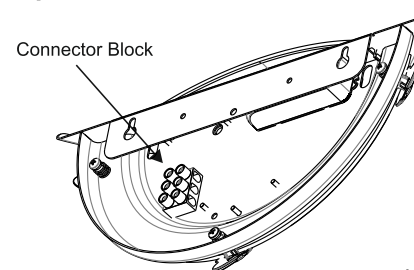


(Fig.2)

Step 3: Drill holes at the positions marked and fit the plastic wall plugs (Fig.2).

Step 4: Insert the fixing screws into the wall plugs, leaving approx. 5mm of the screw shaft exposed.

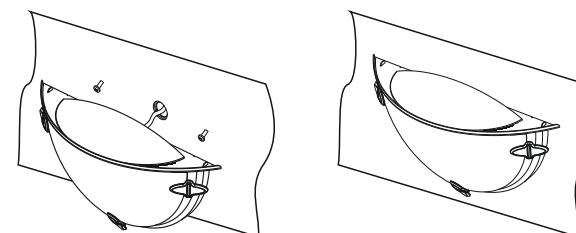
Step 5: Connect the wires in the following way:



(Fig.3)

Wiring Instructions

Step 6: Mount the light fitting onto the wall by hooking the key-hole slots over the fixing screws (Fig. 4).



(Fig.4)