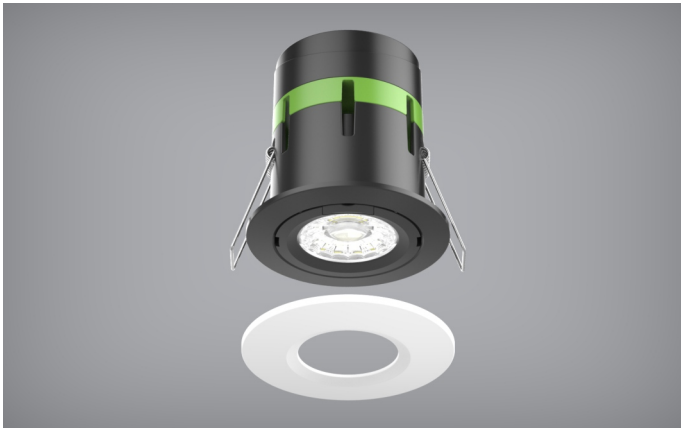




- 3 CCT Setting
- Interchangeable Bezel
- Easy loop in/out connector
- Insulation Coverable
- Good Thermal Effect
- Fire Rated
- IP65 Rated



3CCT SWITCH & INTERCHANGEABLE BEZEL



LOOP IN/OUT CONNECTOR

3 CCT SETTINGS



Warm White
3000k



Cool White
4000k



Daylight
6000k

SPECIFICATIONS

- Input Voltage: 220-240 VAC
- LED Type: COB LED
- Power: 8W
- Lumen Output:
 WW - 660lm, CW - 730lm. DL - 670lm
- CCT Changeable switch:
 WW(3000K) - NW (4000K) - DL(6000K)
- CRI: >80
- Power Factor: >0.9
- IP Rating: IP65
- Beam Angle: 40°
- Dimmable
- 30, 60 & 90 mins Fire Rated
- Plug & Play connectors included
- Magnetic Bezels accessories available

DIMENSIONS

