

SANGAMO

PSPBF

Powersaver Boost Timer & Fused Spur

The latest ESP product manuals can be found on-line:



1 // Features:

PSPBF is a simple to use, multi application time switch. Although primarily used for the control of water heating, the PSPBF can also be used for a multitude of applications including the control of panel heaters, lighting or combi boilers. PSPBF includes a double pole switch and replaceable fuse for added protection.

- Ideal for applications that need short term operating times
- 30 mins, 1 hour and 2 hour boost periods
- With changeable fuse
- With double pole switch to turn on/off power of the load
- Fits directly onto a single gang pattress box
- Switches appliance off automatically after boost period

2 // Specifications:

- Supply: 230V 50/60 Hz
- Fused: Supplied with BS1362 13A Fuse
- Switch Rating: 13A Resistive (3kW)
1000W Incandescent, Halogen lighting
500W Fluorescent lighting
200W LED lighting
100W Compact Fluorescent lighting
- Contact Type: Normally Open
- Fixing: Surface and Flush Mounting
- Terminals: suitable for max. 2.5 mm² flexible and 4.0 mm² fixed cabling
- Case Material: ABS
- Temperature Rating: -10T40
- Operation Temperature: -10°C to 40°C
- Display: LED Lights
- Boost Settings: User selectable - 1/2, 1 or 2 hours
- Accessory Pack: 2x M3.5mm

Please Note: this is a Class 2 Product



3 // Front View and Back View(Fig. 1 and Fig. 2):

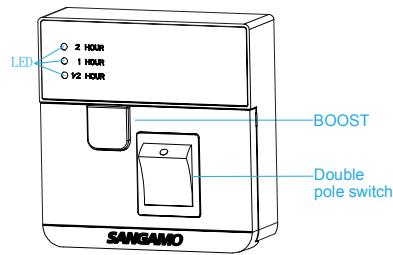


Fig. 1 Front View

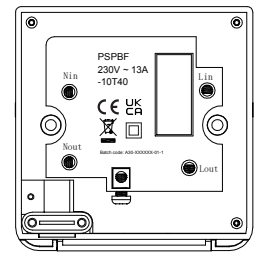


Fig. 2 Back View

4 // Wiring Diagram:

Internal Schematic

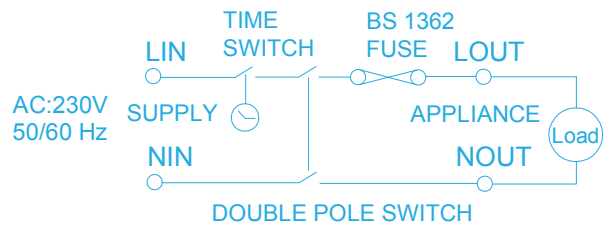


Fig. 3 Wiring Diagram

5 // Installation Guide:

5.1 Flip open front plate from position A

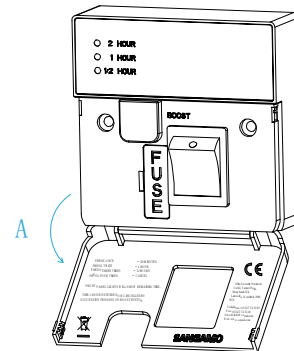


Fig.4

5.2 Wire in accordance with the Wiring diagram and Terminal markings.

Input Voltage:
AC220V-240V 50/60Hz

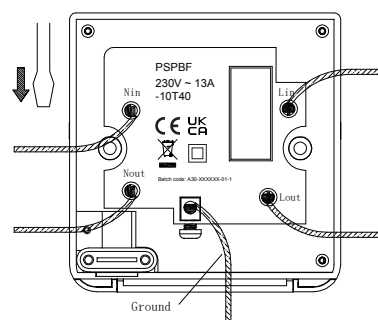


Fig.5

Installation must be by a suitably qualified person in accordance with the latest IEE wiring Regulations.

Provision must be made in the fixed wiring for a means of disconnection from the supply having a contact separation of at least 3mm on all poles. This can be provided by the consumer unit.

5.3 Fixing the mounting box on the wall and secure the unit to the mounting box with the 3.5mm screws provided.

a,b: Fixing Holes

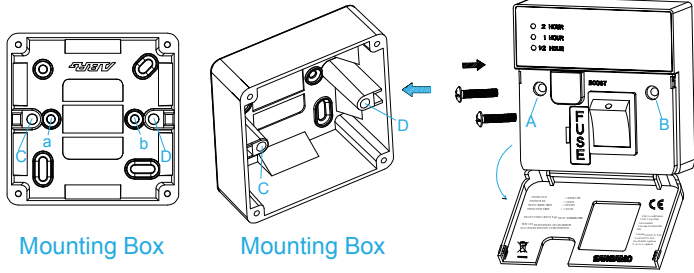


Fig.6

Insert the M3.5mm screws into A & B (on the switch) and C&D(on the mounting box) mounting holes.

6 // Operation Guide:

PSPBF has a double pole switch to turn on/off power to the loads and a BOOST switch to set on period duration as fig. 7.

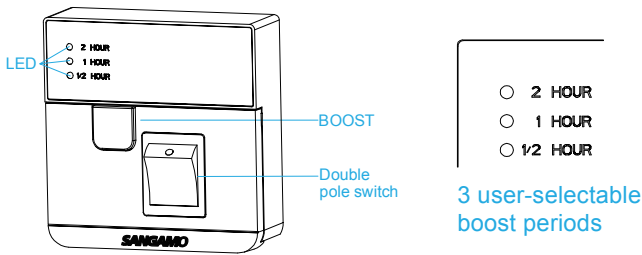


Fig.7

6.1 Put the double pole switch to the ON position, and then set the boost timer by press the BOOST button on the front panel.

Press once = 1/2 hour
 Press twice = 1 hour
 Press three times = 2 hour
 Press four times = Cancel function
 Duration can be extended or cancelled by successive presses.

6.2 Press Boost button once: 1/2 HOUR LED light illuminates. The loads turn on, and will turn off automatically 1/2HOUR later;



Fig.8

6.3 Press Boost button twice: 1HOUR LED light illuminates. The loads turn on, and will turn off automatically 1HOUR later;

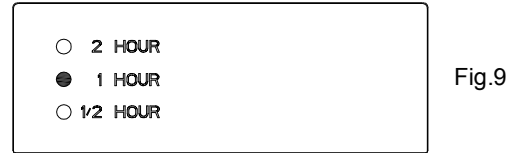


Fig.9

6.4 Press Boost button three times: 2HOUR LED light illuminates. The loads turn on, and will turn off automatically 2HOUR later;



Fig.10

6.5 Press Boost button four times: the Boost function is canceled, the loads and all the LED lights will turn off.

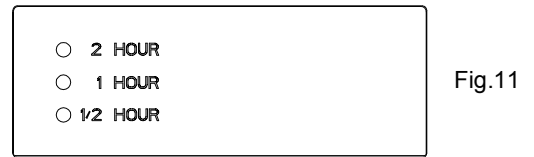


Fig.11

6.6 While the Boost timer is active the indicator light will change to show the maximum remaining time; e.g. 2 Hours selected.

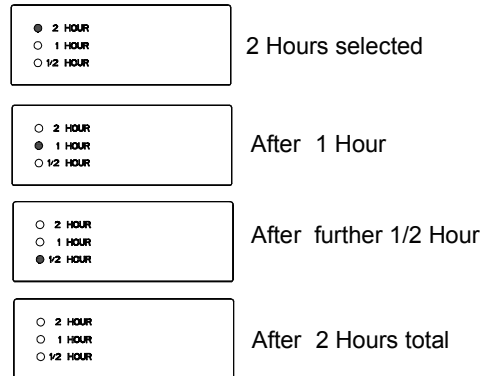


Fig.12

6.7 Extend Boost :

Whilst Boost timer is active, pressing the "BOOST" button will extend the Boost time and the corresponding indicator light will turn on.

For example, if "1HOUR" selected, when the load is on, press "BOOST" button again, the Boost time will be extended to 2HOUR, and the 2HOUR LED light will illuminate. Press "BOOST" button again, boost is canceled and the load will turn off.

Date Issued	Issue No	Description
J20	A30-PSPBF-01-2	Rev.1

Health & Safety

This unit must be installed by a suitably qualified person in accordance with the latest IEE Wiring Regulations. Isolate mains supply before commencing installation. Please read all installation instructions before proceeding. Example circuit diagrams for typical installations are shown. These diagrams are schematic and should be used as a guide only. Please ensure that all installations comply with the current IEE regulations. For reasons of space and clarity not every system has been included and the diagrams have been simplified, for instance some Earth connections have been omitted. Other control components shown in the diagrams i.e. Valves, Room Stats etc. are general representations only. However, the wiring detail can be applied to the corresponding models of most manufacturers. Your product is not user serviceable. Do not dismantle this product. Due to our policy of continuous product improvement and development, the specifications in this guide may be subject to change without prior notice.

Elite Security Products
 Unit 7, Target Park, Shawbank Road,
 Lakeside, Redditch, B98 8YN

Tel: 01527 515150
 Fax: 01527 515143
 Email: info@espuk.com
 Web: www.espuk.com

