



Data Sheet

Product Code: XS71B

Product Description: 2-Gang (10A Intermediate Switch + 10A 1- or 2-Way Rocker Switch)

Range: Classic

Finish: Matt Chrome

Product Category: Intermediate Rocker Switch

Insert/Knob Colour: Black Rockers

Barcode: 5021575831146

Dimensions: 86x86x25mm

Faceplate Depth: 7mm

Net Weight: 146g

Gross Weight: 148g

Fixing Centres: 60.3mm

Depth from Mounting Face: 11mm

Recommended Back Box Depth: 16mm

Operating Voltage: 230v 50Hz

Maximum Load Rating: 10A

Maximum Current Rating: 10A

Terminal (Live) Diameter: 3.3mm; **Capacity:** 3 x 1.5mm²

Terminal (Earth) Diameter: 3.3mm; **Capacity:** 3 x 1.5mm²

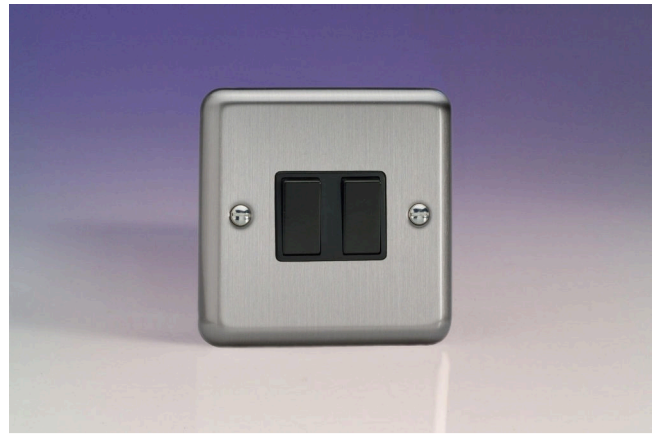
Intended Applications: Indoor Use Only. Domestic lighting circuits.

Safety Advice: Product Must Be Earthed.

Applicable Safety Standard: BS EN 60669-1

Commodity Code: 85365007

Declaration of Conformity



Product Features

- ☑ 1 x 1- or 2-way switch with 1 x intermediate (3-way) switch alongside
- ☑ Suitable for controlling both mains and low voltage lighting
- ☑ Intermediate switch enables 3-way switching
- ☑ Curved edge faceplate



10 YEAR GUARANTEE

BRITISH MADE



All information is subject to change without notice. Errors and omissions excepted. Images are for illustrative purposes only. Individual features and colours may vary. Refer to date of issue to identify latest version.

Date of Issue: 06th February 2022 © Doyle & Tratt Products Ltd, Carylls Lea, Faygate, West Sussex, RH12 4SJ, United Kingdom. All rights reserved.