



Data Sheet

Product Code: XT20ND

Product Description: 1-Gang 20A Double Pole Rocker Switch + Neon Indicator Light with Metal Rockers

Range: Classic

Finish: Brushed Steel

Product Category: 20A Rocker Switch

Insert/Knob Colour: Steel Rocker

Barcode: 5021575032116

Dimensions: 91x91x30mm

Faceplate Depth: 8mm

Net Weight: 126g

Gross Weight: 128g

Fixing Centres: 60.3mm

Depth from Mounting Face: 16.7mm

Recommended Back Box Depth: 16mm

Operating Voltage: 230v 50Hz

Maximum Load Rating: 20A

Maximum Current Rating: 20A

Terminal (Live) Diameter: 4.5mm; **Capacity:** 4 x 2.5mm²

Terminal (Neutral) Diameter: 4.5mm; **Capacity:** 4 x 2.5mm²

Terminal (Earth) Diameter: 3.3mm; **Capacity:** 3 x 1.5mm²

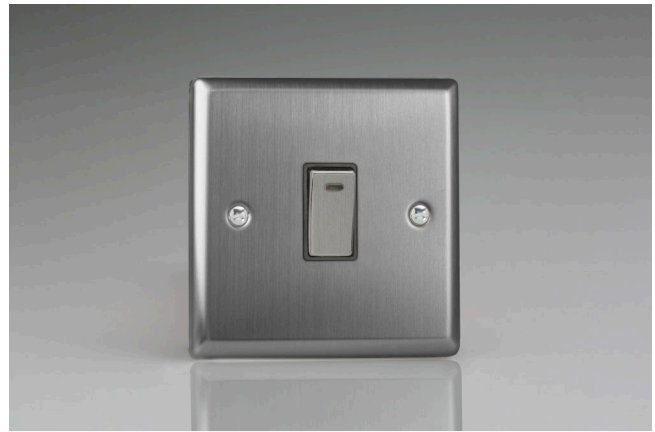
Intended Applications: Indoor Use Only. Domestic power supply.

Safety Advice: Product Must Be Earthed.

Applicable Safety Standard: BS EN 60669-1

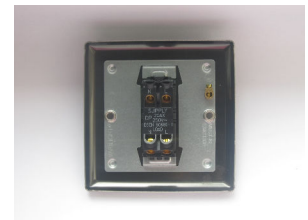
Commodity Code: 85389091

Declaration of Conformity



Product Features

- ✔ Double pole switching
- ✔ Neon indicator light
- ✔ Bevelled edge faceplate
- ✔ Neon indicator can also be used as a 'Nightlight' to help you find your switch in a darkened room. [Click here for a wiring diagram.](#)



10 YEAR GUARANTEE

BRITISH MADE



All information is subject to change without notice. Errors and omissions excepted. Images are for illustrative purposes only. Individual features and colours may vary. Refer to date of issue to identify latest version.

Date of Issue: 06th February 2022 © Doyle & Tratt Products Ltd, Carylls Lea, Faygate, West Sussex, RH12 4SJ, United Kingdom. All rights reserved.