



Data Sheet

Product Code: XTFOD

Product Description: 16A Flex Outlet Plate

Range: Classic

Finish: Brushed Steel

Product Category: Flex Outlet

Insert/Knob Colour: Steel Insert

Barcode: 5021575032826

Dimensions: 91x91x34mm

Faceplate Depth: 8mm

Net Weight: 106g

Gross Weight: 108g

Fixing Centres: 60.3mm

Depth from Mounting Face: 24.9mm

Recommended Back Box Depth: 16mm

Operating Voltage: N/A

Maximum Load Rating: 16A

Maximum Current Rating: 16A

Terminal (Live) Diameter: 4.5mm; **Capacity:** 4 x 2.5mm²

Terminal (Neutral) Diameter: 4.5mm; **Capacity:** 4 x 2.5mm²

Terminal (Earth) Diameter: 3.3mm; **Capacity:** 3 x 1.5mm²

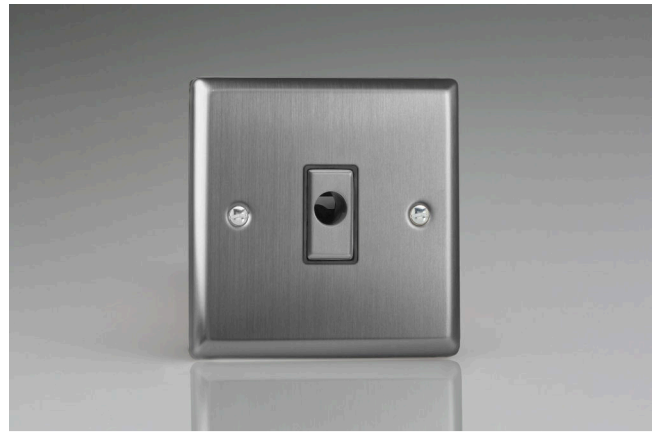
Intended Applications: Indoor Use Only. Domestic power supply.

Safety Advice: Product Must Be Earthed.

Applicable Safety Standard: BS EN 60669-1

Commodity Code: 85389091

Declaration of Conformity



Product Features

- ✔ Can be used in a number of different environments for many applications
- ✔ Cable clamp
- ✔ Bevelled edge faceplate



10 YEAR GUARANTEE

BRITISH MADE



All information is subject to change without notice. Errors and omissions excepted. Images are for illustrative purposes only. Individual features and colours may vary. Refer to date of issue to identify latest version.

Date of Issue: 06th February 2022 © Doyle & Tratt Products Ltd, Carylls Lea, Faygate, West Sussex, RH12 4SJ, United Kingdom. All rights reserved.