

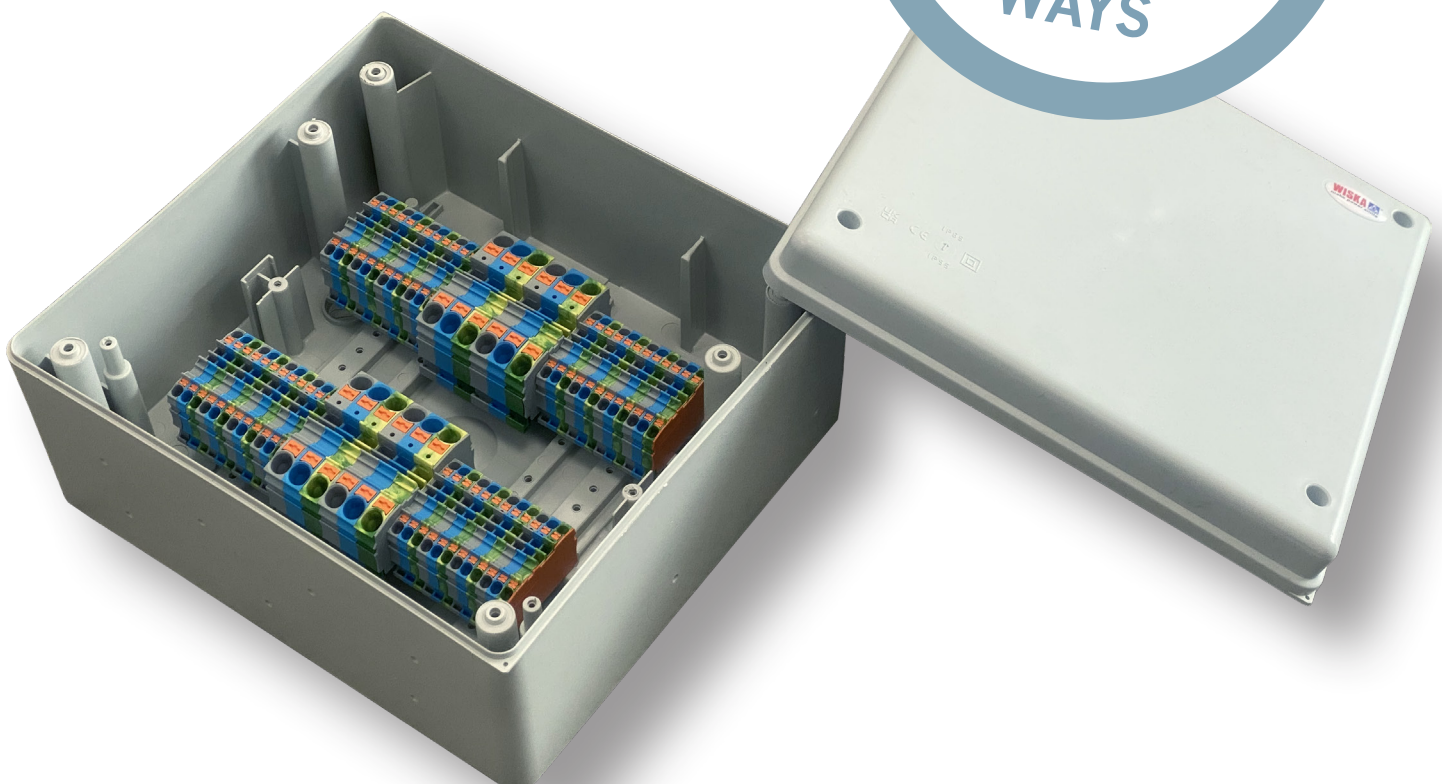
No Way! Yes Way!

Expanding our **Consumer Unit Relocation (CUR)** range further, we are pleased to introduce the **NEW 20 Way CUR**.

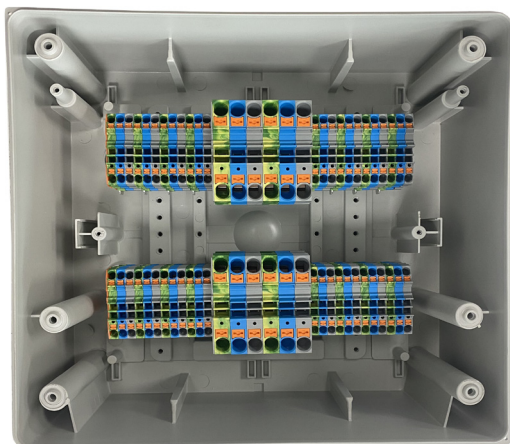
The CUR is the perfect solution for re-locating a consumer unit in a domestic dwelling.

An IP65 rated enclosure fitted with WAGO TOPJOB DIN-Rail terminals.

16 sets of push-in terminals up 4mm (32A) / 4 sets if push-in terminals up to 16mm (76A) all mounted on a plastic DIN Rail.



CUR 20 Way - Technical



CUR - 823 CUR/P

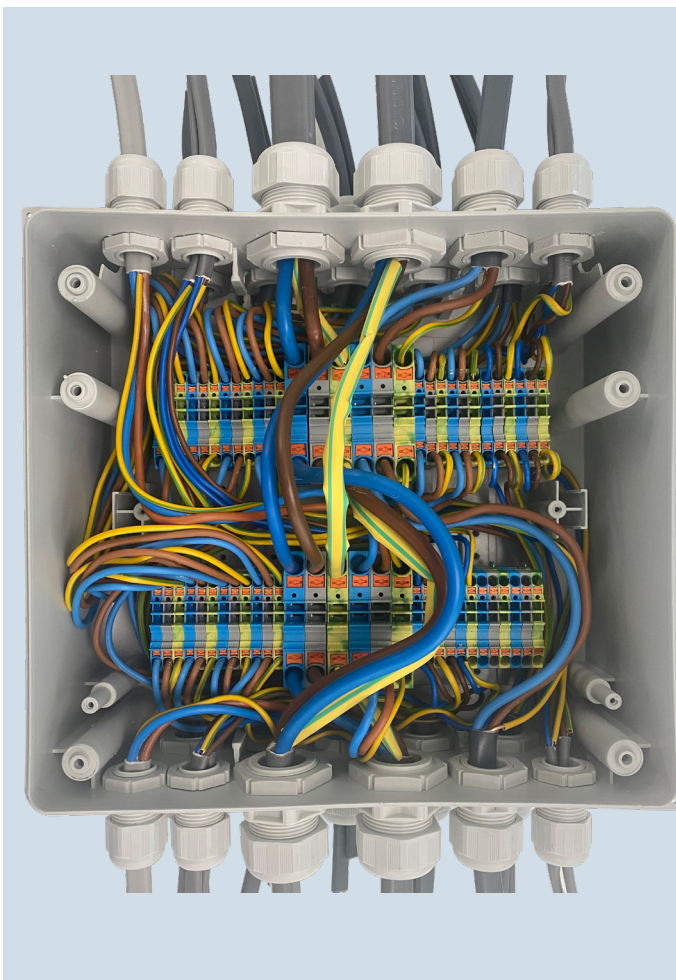
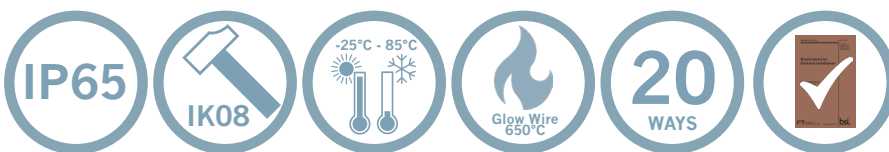
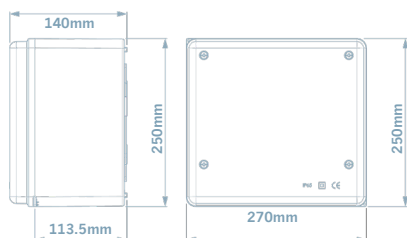
Code: 10112389

Terminals...

WAGO TOBJOB

- 2202-1201 Grey 2 conductor DIN-rail terminal with button push-in up to 4mm, 32A (x16)
- 2202-1204 Blue 2 conductor DIN-rail terminal with button push-in up to 4mm, 32A (x16)
- 2202-1207 Green/ Yellow 2 conductor DIN-rail terminal with button push-in up to 4mm, 32A (x16)
- 2002-1292 Orange endplate for 2202 (x2)
- 2210-1201 Grey 2 conductor DIN-rail terminal with button push-in up to 16mm, 76A (x4)
- 2210-1204 Blue 2 conductor DIN-rail terminal with button push-in up to 16mm, 76A (x4)
- 2210-1207 Green/ Yellow 2 conductor DIN-rail terminal with button push-in up to 16mm, 76A (x4)
- 2010-1292 Orange endplate for 2210 (x2)

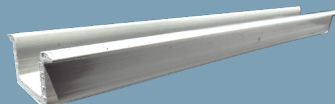
We reserve the right to use alternative terminals to the same standard should there be supply issues.



Q&A

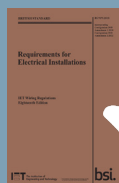
Why the plastic DIN Rail?

To avoid a miss reading when testing the continuity of circuits.



Is it Amendment 3 compliant?

Yes, the CUR is essentially a junction box. There is no control or switch gear used in the installation, it's purely used to extend.



What about the 25mm tails?

The main reason, it's easier to replace the tails due to them (usually) being the shortest cable run.

